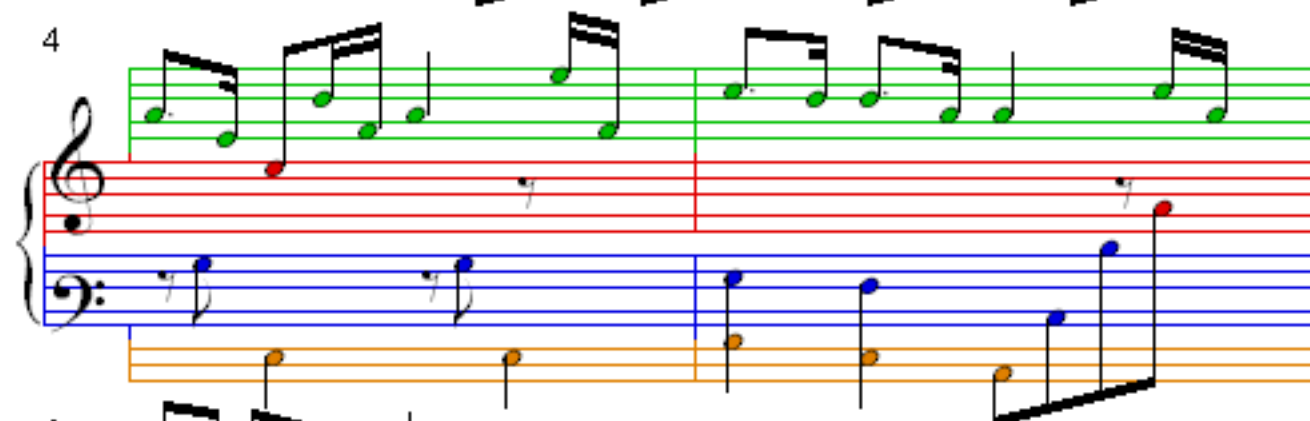


Jurassic Park- Theme Song

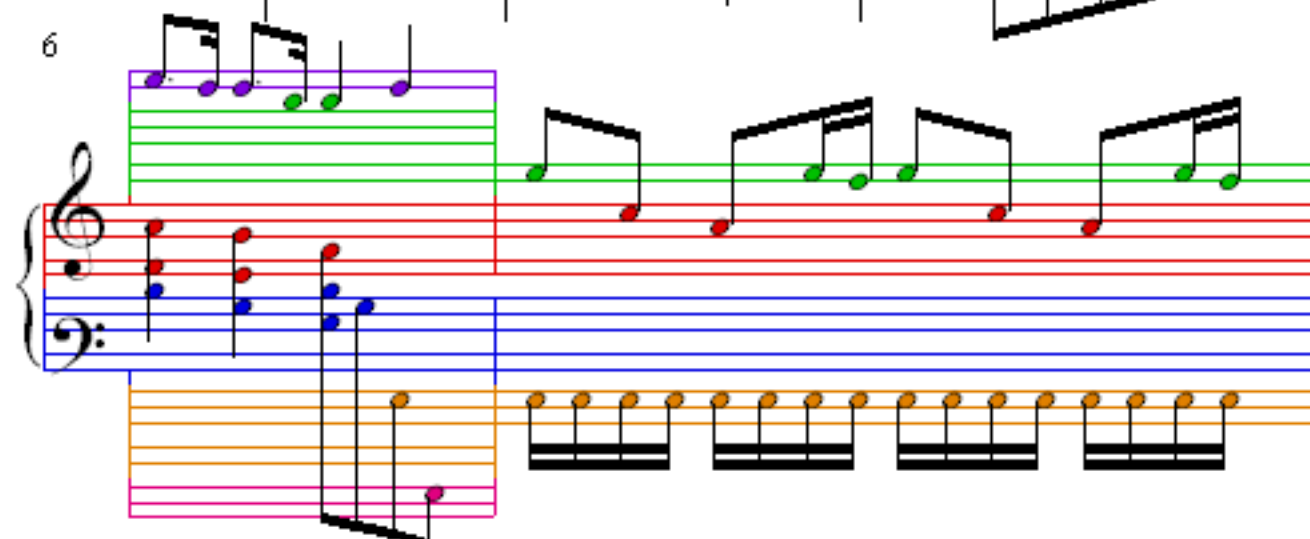
1



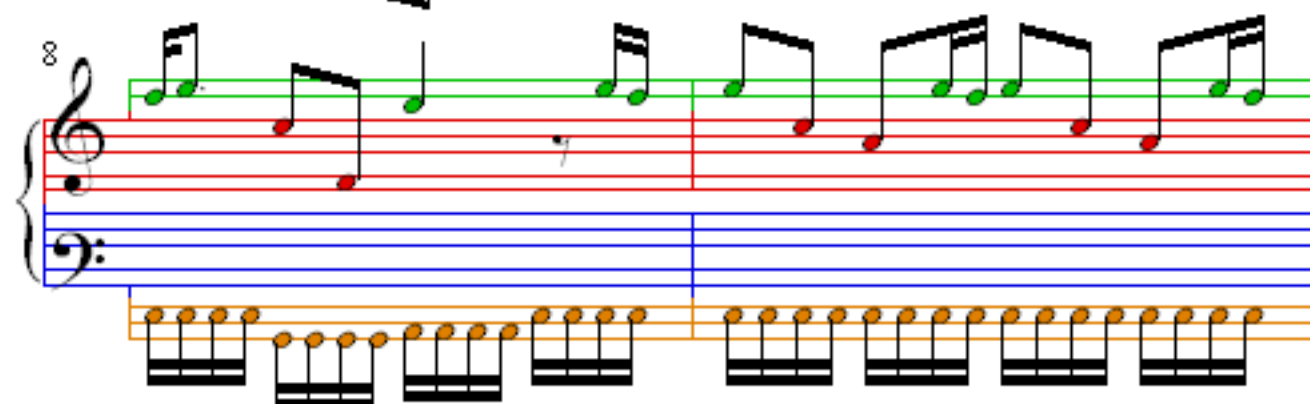
4



6



8



10

12

14

18

Detailed description: This image shows a page of musical notation for the Jurassic Park Theme Song. It contains four systems of music, each with a treble and bass staff. The notation is color-coded: purple for the melody in the treble staff, green for chords in the treble staff, red for the bass line in the bass staff, blue for chords in the bass staff, and orange for the bass line in the bass staff. The measures are numbered 10, 12, 14, and 18. The music is in 4/4 time and features a mix of eighth and sixteenth notes, with some measures containing rests.

22

Measures 22-25 of the musical score. The system features a grand staff with treble and bass clefs. The treble staff has red notes, and the bass staff has blue notes. An orange staff is introduced in measure 24, containing orange notes. A green staff is introduced in measure 25, containing green notes. The notation includes various note values and rests.

26

Measures 26-29 of the musical score. The system features a grand staff with treble and bass clefs. The treble staff has red notes, and the bass staff has blue notes. A green staff is introduced in measure 29, containing green notes. The notation includes various note values and rests.

30

Measures 30-33 of the musical score. The system features a grand staff with treble and bass clefs. The treble staff has red notes, and the bass staff has blue notes. A green staff is introduced in measure 31, containing green notes. A pink staff is introduced in measure 32, containing pink notes. The notation includes various note values and rests.

34

Measures 34-37 of the musical score. The system features a grand staff with treble and bass clefs. The treble staff has red notes, and the bass staff has blue notes. A green staff is introduced in measure 34, containing green notes. A pink staff is introduced in measure 35, containing pink notes. The notation includes various note values and rests.

38

38

The musical score for Example 10-10 is presented in three measures. The melody is written in the treble clef with a green staff. The piano accompaniment is written in the bass clef with a blue staff. The piano part features a steady eighth-note accompaniment in the right hand and a simple bass line in the left hand. The melody is a simple eighth-note scale.

41


41

44

The image shows a musical score for the song 'The Rose Tree'. It consists of three staves. The top staff is a treble clef with a key signature of one flat (B-flat) and a 2/4 time signature. The melody is written in green and purple notes. The middle staff is a bass clef with a key signature of one flat (B-flat) and a 2/4 time signature. The bass line is written in blue notes. The bottom staff is a bass clef with a key signature of one flat (B-flat) and a 2/4 time signature. The bass line is written in blue notes. The score is divided into three measures. The first measure contains a treble clef, a bass clef, and a bass line. The second measure contains a treble clef, a bass clef, and a bass line. The third measure contains a treble clef, a bass clef, and a bass line. The notes are written in green and purple. The measure numbers 41 and 44 are visible at the top left of the image.

44

44



47

47

Jurassic Park- Theme Song

Page 4 of 6

50

53

57

60

63

66

69

72

75

78

81

84

87

90

93

96

99

102

105

108

111

114

117

120

123

126

129

132

135

138

141

144

147

150

153

156

159

162

165

168

171

174

177

180

183

186

189

192

195

198

201

204

207

210

213

216

219

222

225

228

231

234

237

240

243

246

249

252

255

258

261

264

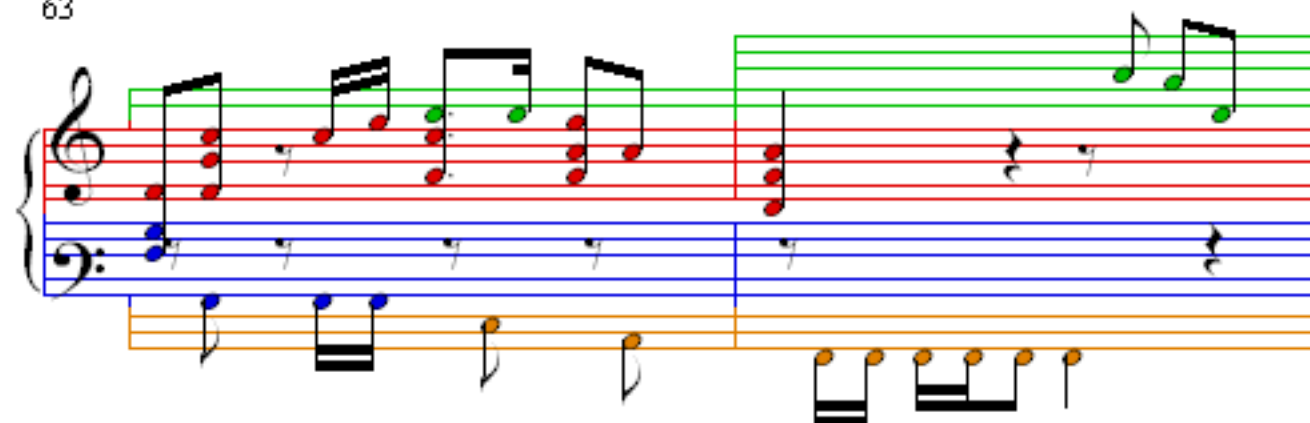
267

270

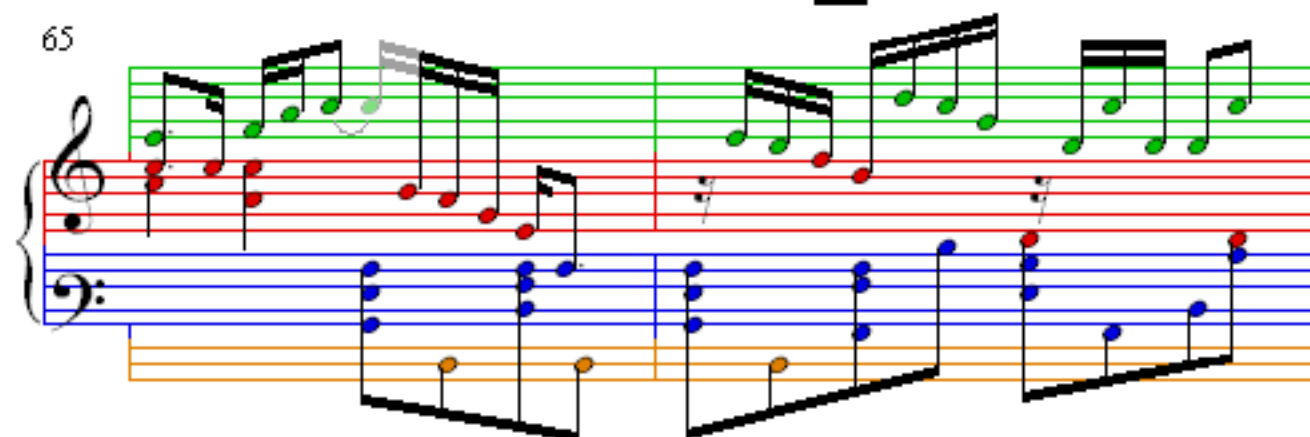
273

276

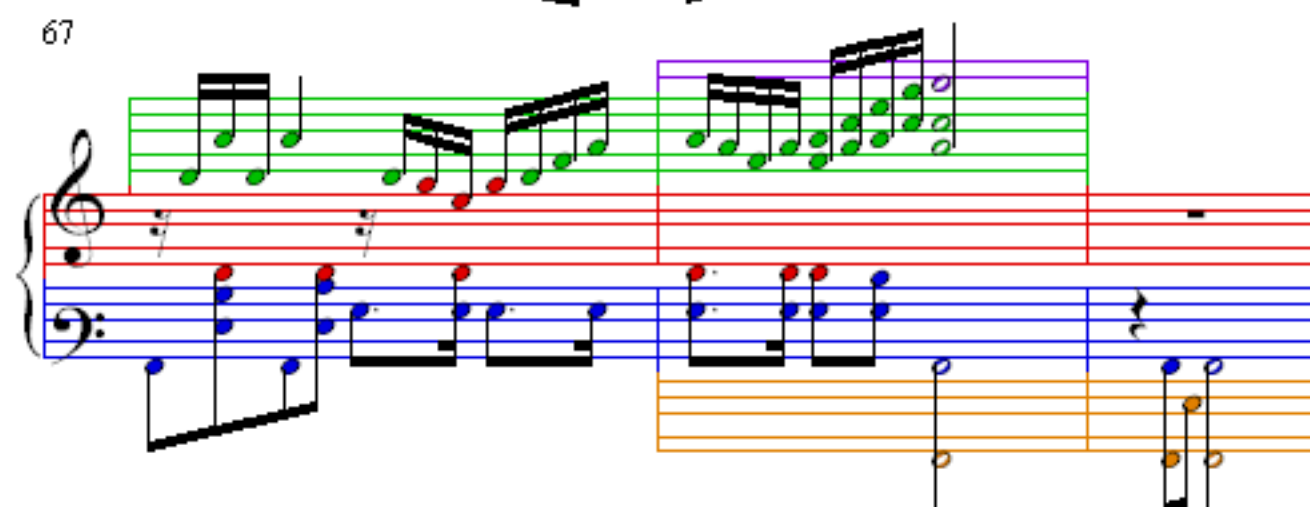
63



65



67



70

