

He Won't Go

Paul Epworth & Adele Adkins

Paul Epworth & Adele Adkins

4

A musical score for the song 'The Rose Tree'. The score is written for a piano and voice. The piano part is in the lower register, using a grand staff with a treble and bass clef. The voice part is in the upper register, using a single staff with a soprano clef. The key signature is one flat (B-flat), and the time signature is 3/4. The score consists of three measures. The first measure shows the piano playing a triplet of eighth notes (G4, A4, Bb4) followed by a quarter note (C5). The second measure shows the piano playing a quarter note (G4) followed by a quarter rest, then a quarter note (Bb4). The third measure shows the piano playing a quarter note (G4) followed by a quarter rest, then a quarter note (Bb4). The voice part enters in the second measure with a half note (G4) and a quarter note (A4).

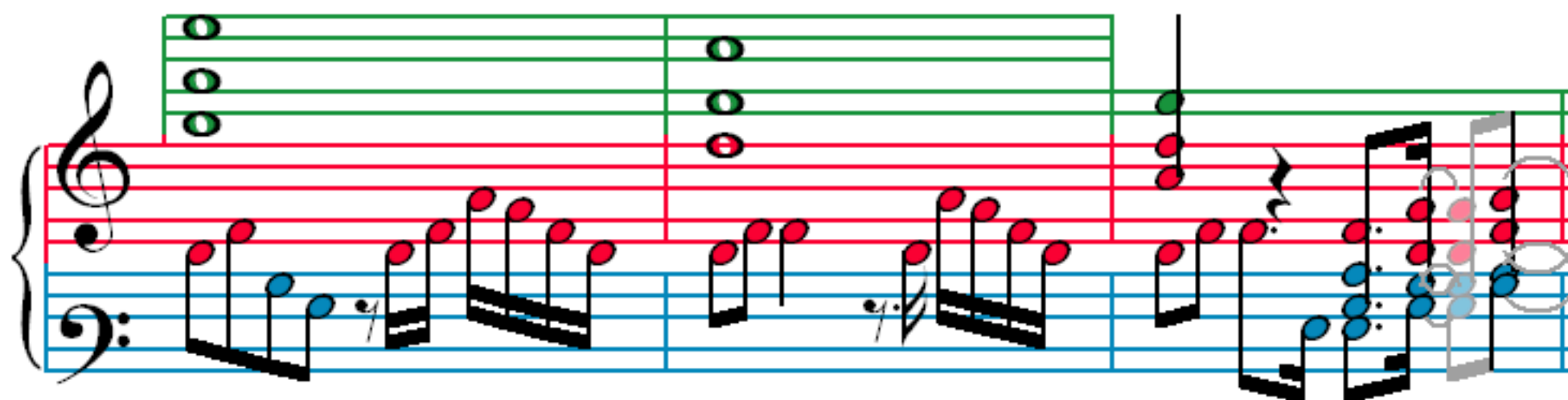
7

[illegible]

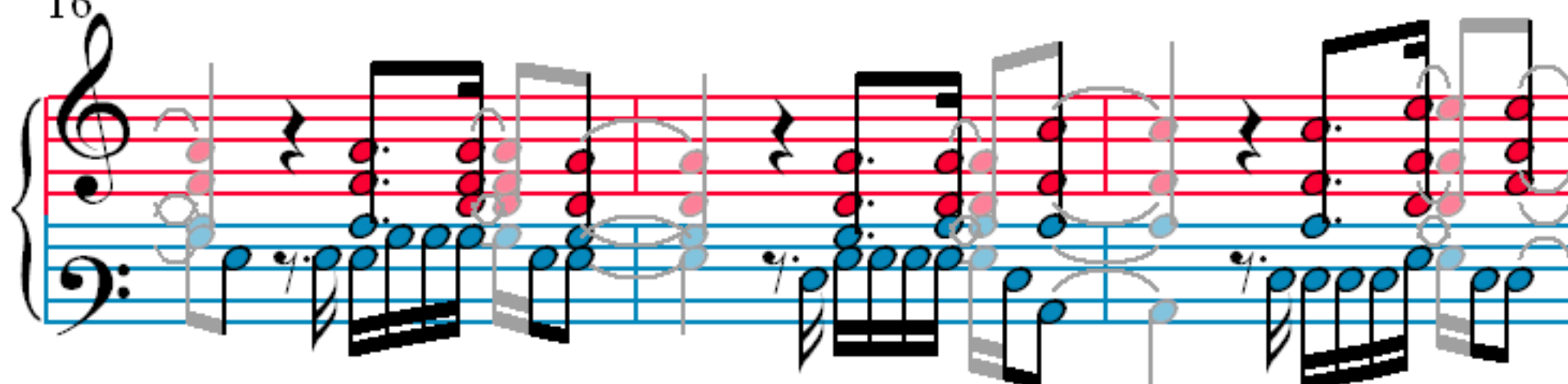
10

A musical score for the song 'The Rose Tree'. The score is written for a piano, with a treble clef on the right and a bass clef on the left. The treble staff has a key signature of one flat (B-flat) and a 3/4 time signature. The bass staff has a key signature of one flat (B-flat) and a 3/4 time signature. The melody is written in the treble staff, and the accompaniment is written in the bass staff. The melody consists of a series of eighth and sixteenth notes, with a final measure containing a whole note. The accompaniment consists of a series of eighth and sixteenth notes, with a final measure containing a whole note. The score is divided into three measures by vertical bar lines.

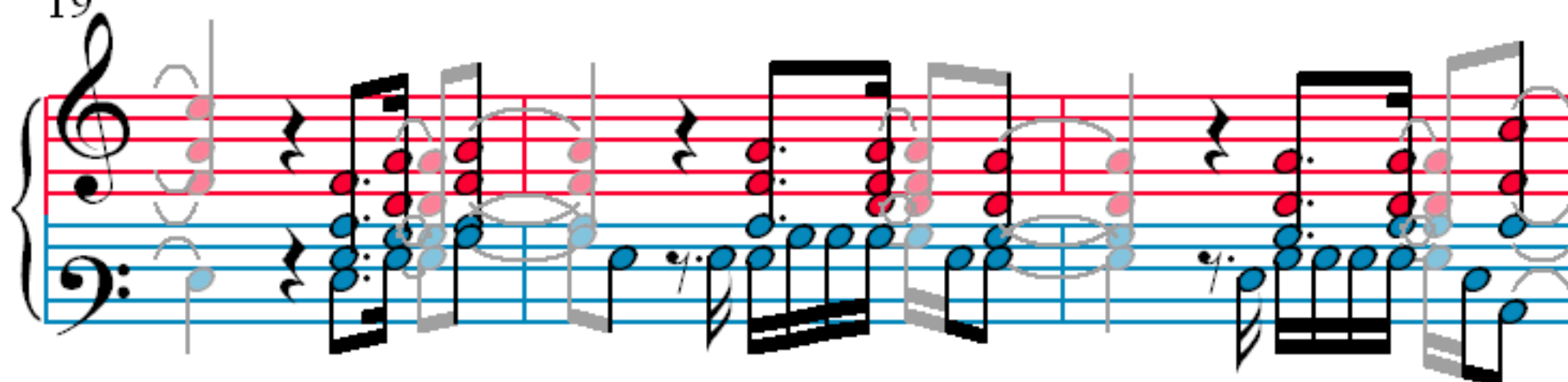
13



16



19



22

