

# Adagio Cantabile

From Pathétique Sonata

Ludwing Van Beethoven

$\text{♩} = 110$

1

4

7

10

Detailed description: This image shows the first ten measures of the 'Adagio Cantabile' movement from Beethoven's 'Pathétique Sonata'. The score is written for piano in 2/2 time. It features a grand staff with treble and bass clefs. The notation includes various note values (half notes, quarter notes, eighth notes), rests, and dynamic markings. The first system (measures 1-3) has a treble staff with a key signature change to two flats and a bass staff with a low register. The second system (measures 4-6) continues the melody in the treble and accompaniment in the bass. The third system (measures 7-9) features a more complex melodic line in the treble and a steady accompaniment in the bass. The fourth system (measures 10-12) shows a continuation of the themes. The notation is color-coded: red for the main melody, blue for the accompaniment, and orange for the bass line. A green line highlights the final measure of the first system.

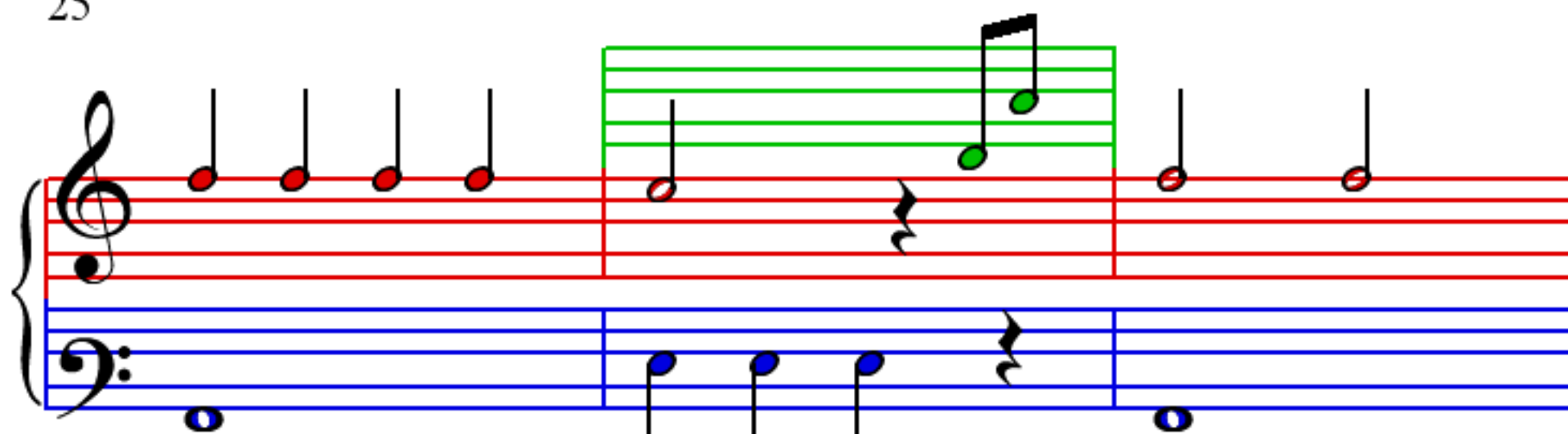
13

16

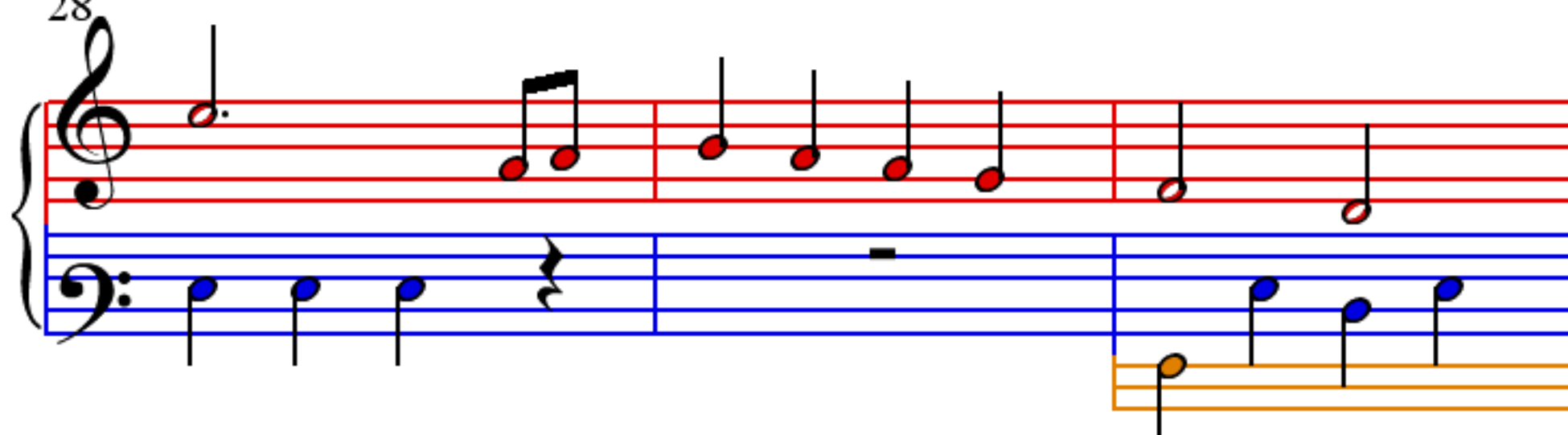
19

22

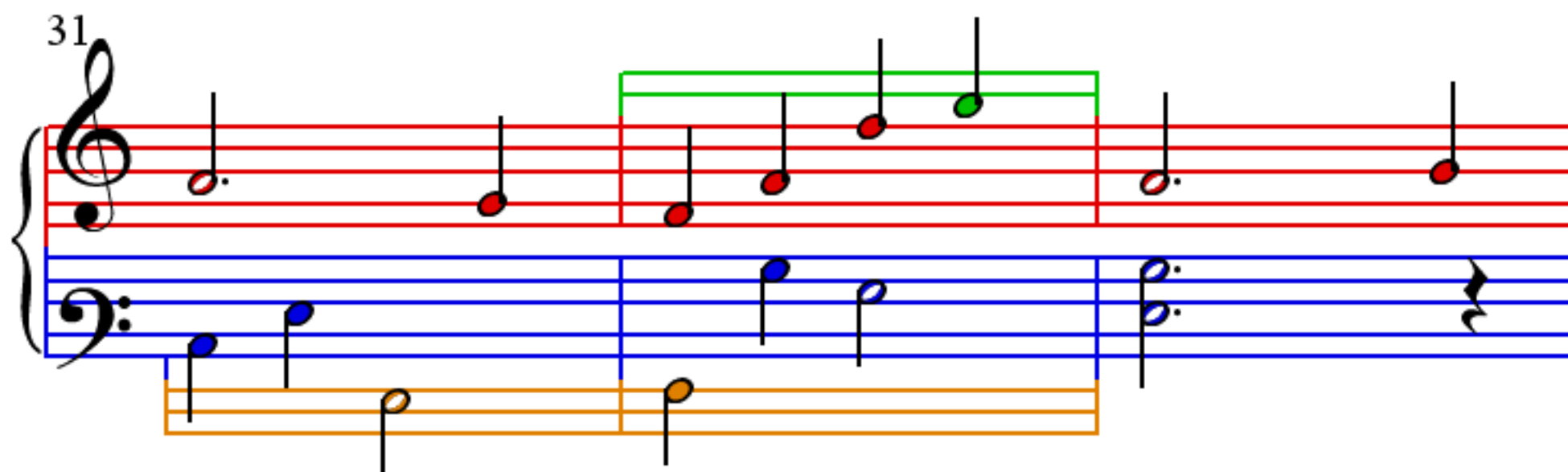
25



28



31



34

