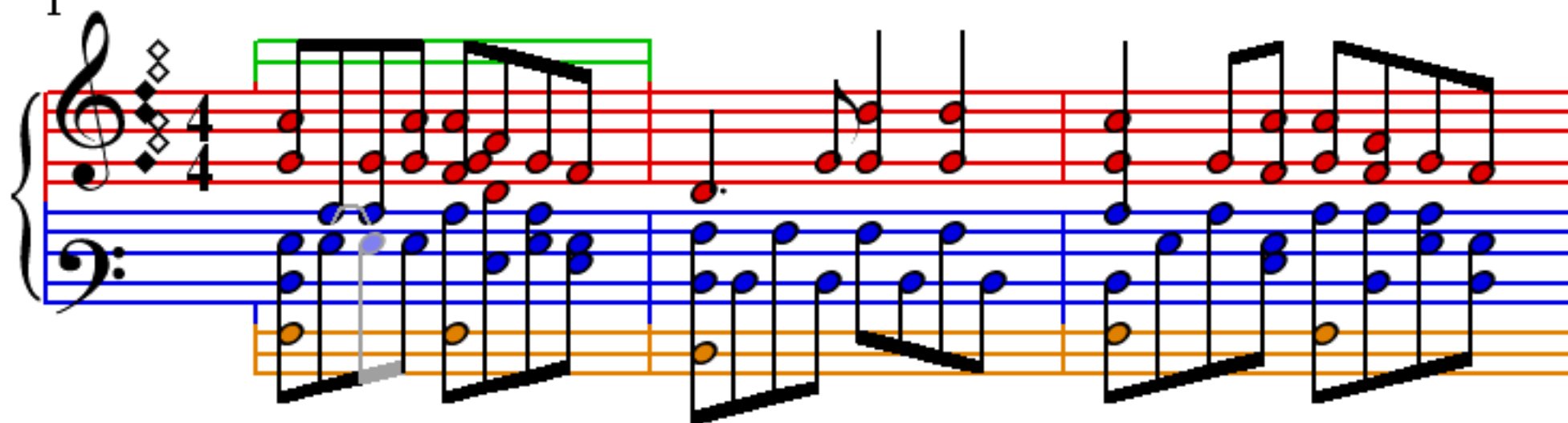


Today

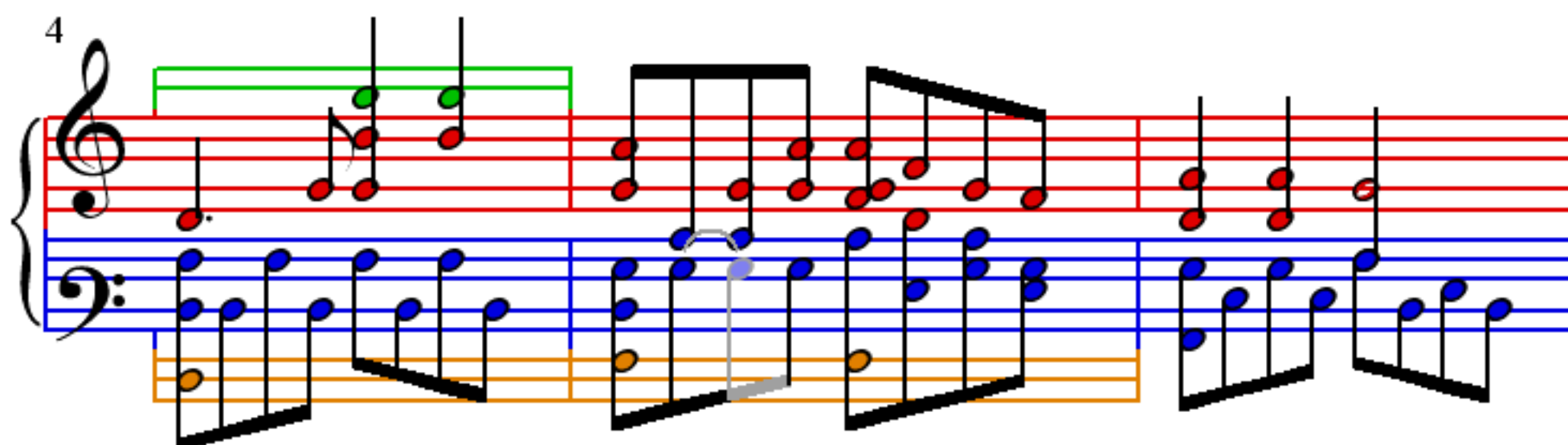
Emily Nollan

$\bullet = 100$

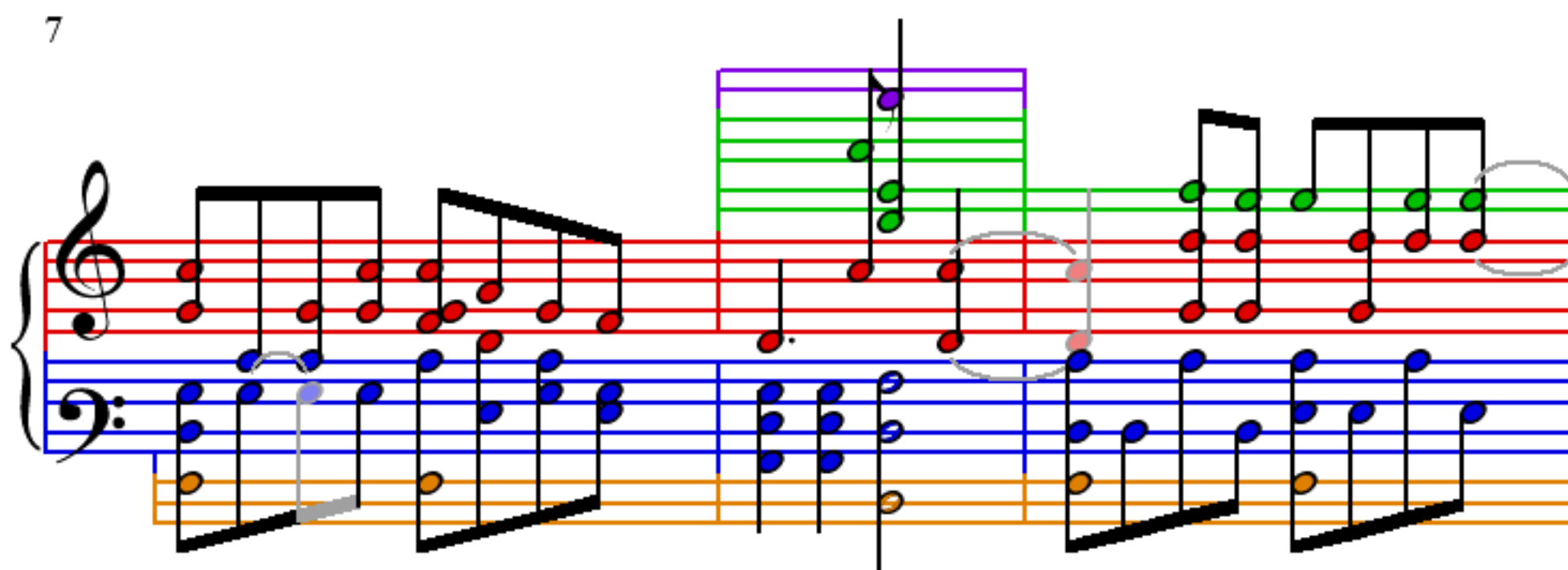
1



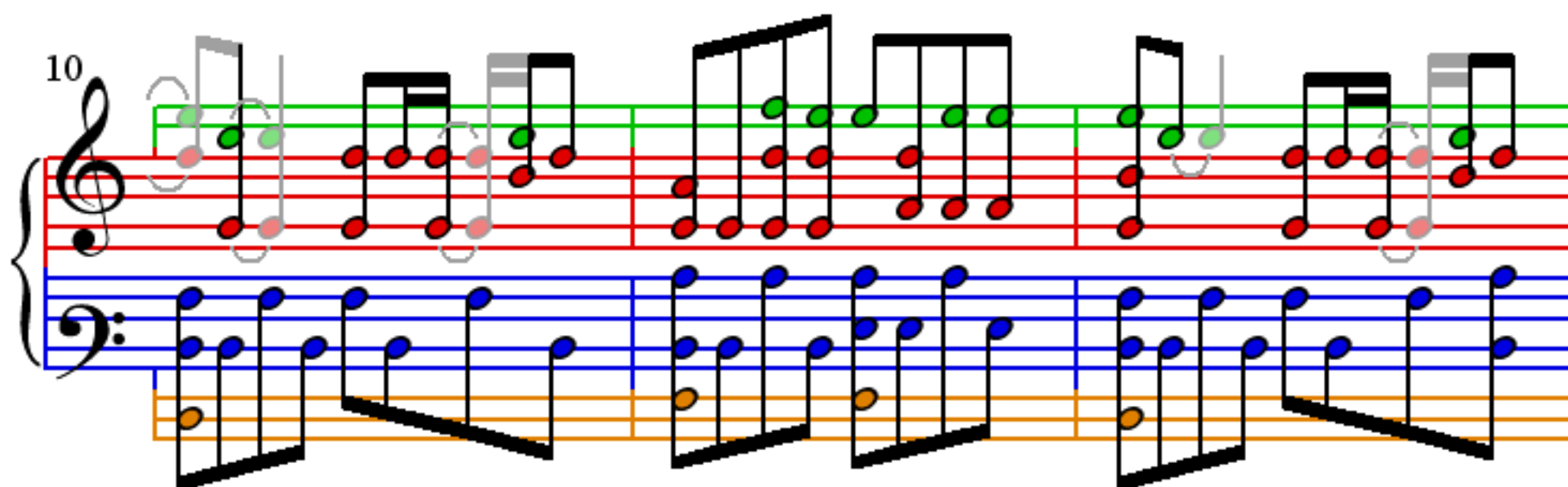
4



7



10



13

This system contains measures 13 through 16. The treble clef staff has a green staff line above it. Measures 13-14 show a sequence of notes with green and red dots. Measures 15-16 show a sequence of notes with green and red dots, with a grey oval highlighting a group of notes in measure 15. The bass clef staff has a blue staff line above it. Measures 13-14 show a sequence of notes with blue and orange dots. Measures 15-16 show a sequence of notes with blue and orange dots, with a grey oval highlighting a group of notes in measure 15.

17

This system contains measures 17 through 19. The treble clef staff has a green staff line above it. Measures 17-18 show a sequence of notes with green and red dots. Measures 19 shows a sequence of notes with green and red dots, with a grey oval highlighting a group of notes. The bass clef staff has a blue staff line above it. Measures 17-18 show a sequence of notes with blue and orange dots. Measures 19 shows a sequence of notes with blue and orange dots, with a grey oval highlighting a group of notes.

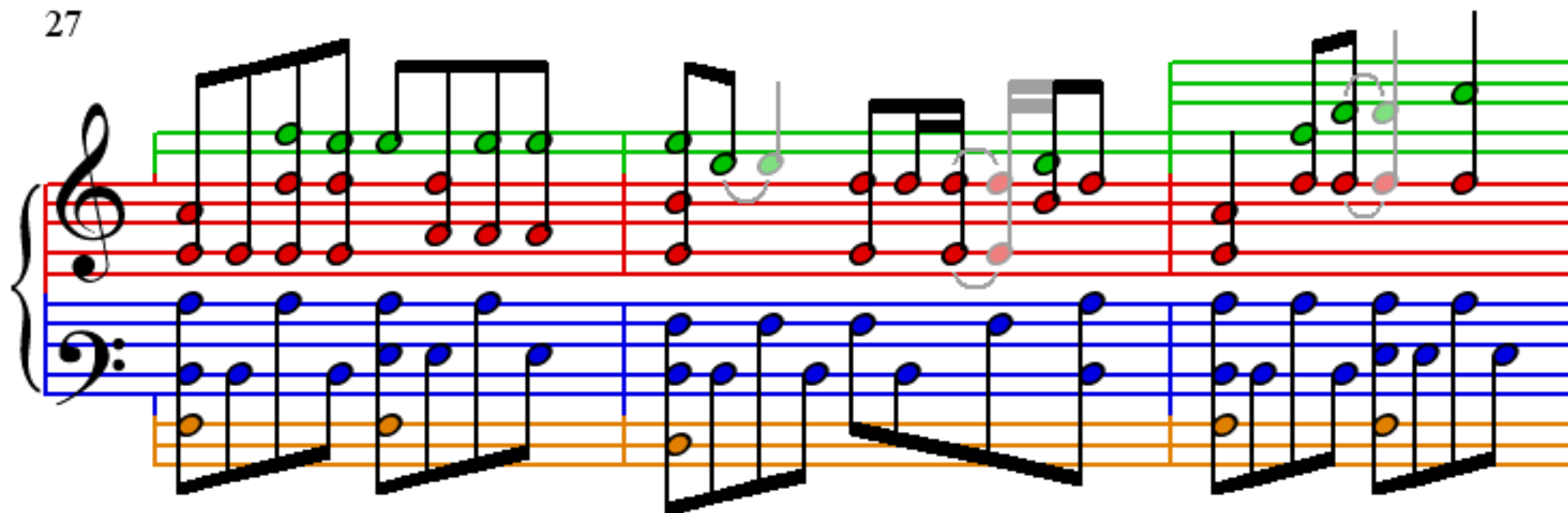
20

This system contains measures 20 through 22. The treble clef staff has a green staff line above it. Measures 20-21 show a sequence of notes with green and red dots. Measures 22 shows a sequence of notes with green and red dots, with a grey oval highlighting a group of notes. The bass clef staff has a blue staff line above it. Measures 20-21 show a sequence of notes with blue and orange dots. Measures 22 shows a sequence of notes with blue and orange dots, with a grey oval highlighting a group of notes.

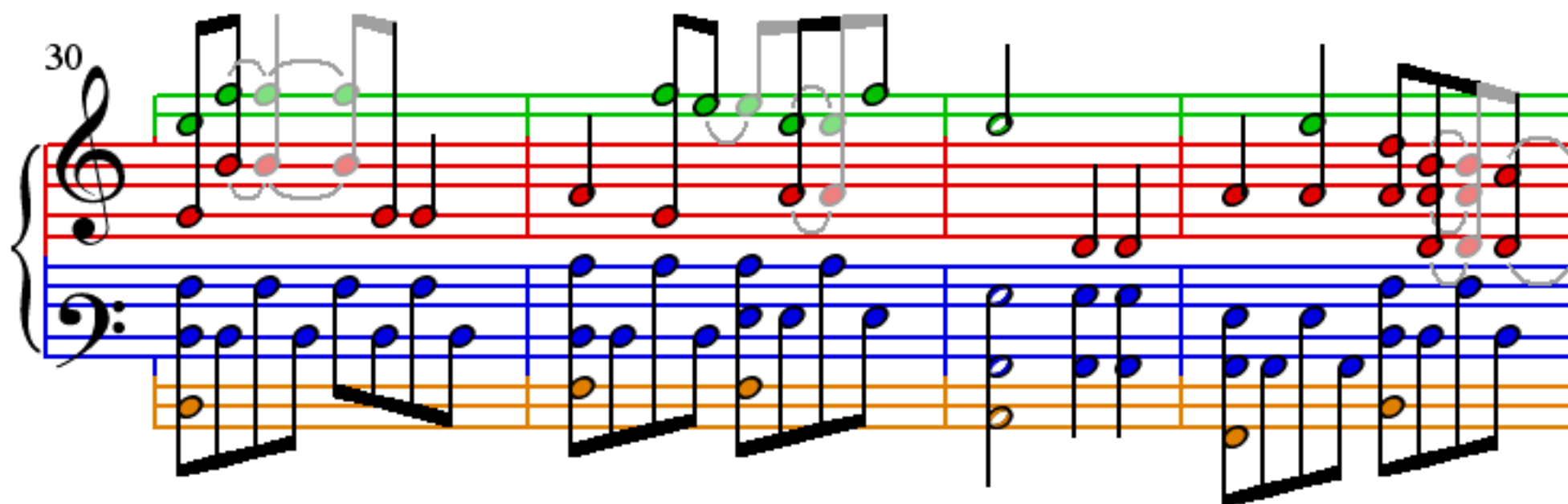
23

This system contains measures 23 through 25. The treble clef staff has a green staff line above it. Measures 23-24 show a sequence of notes with green and red dots. Measures 25 shows a sequence of notes with green and red dots, with a grey oval highlighting a group of notes. The bass clef staff has a blue staff line above it. Measures 23-24 show a sequence of notes with blue and orange dots. Measures 25 shows a sequence of notes with blue and orange dots, with a grey oval highlighting a group of notes.

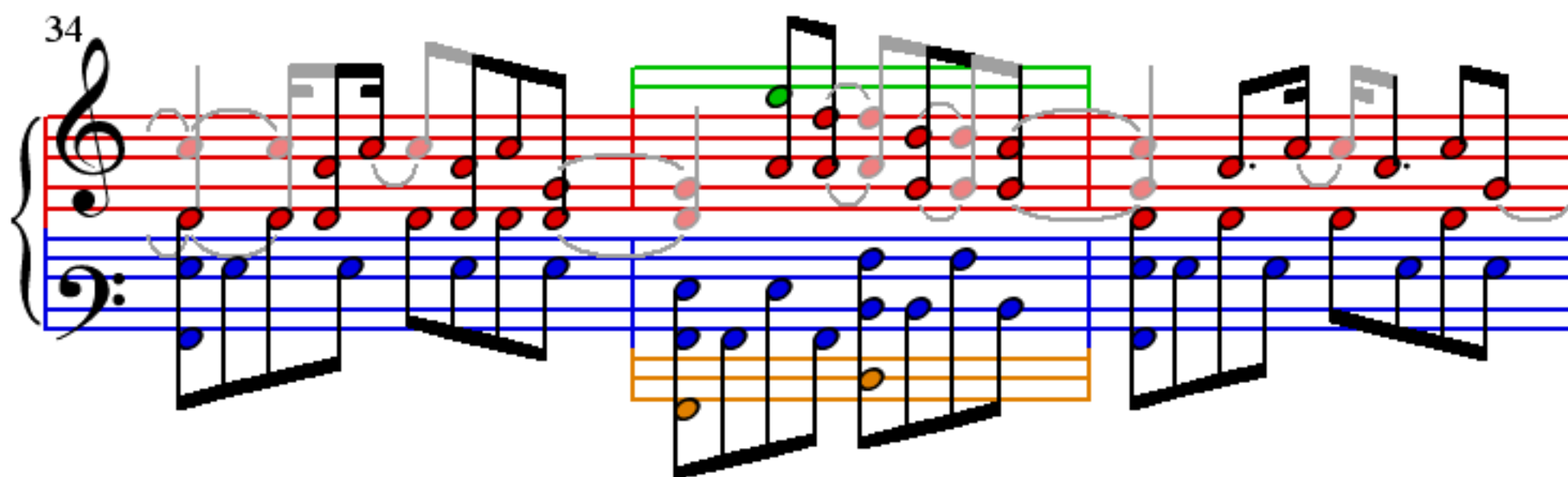
27



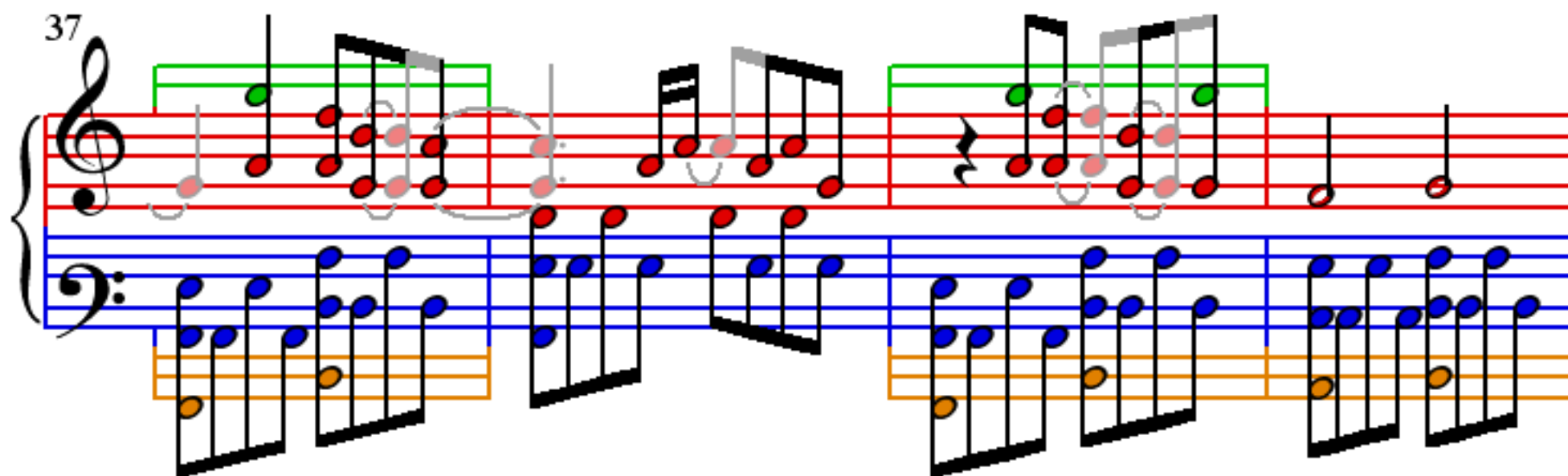
30



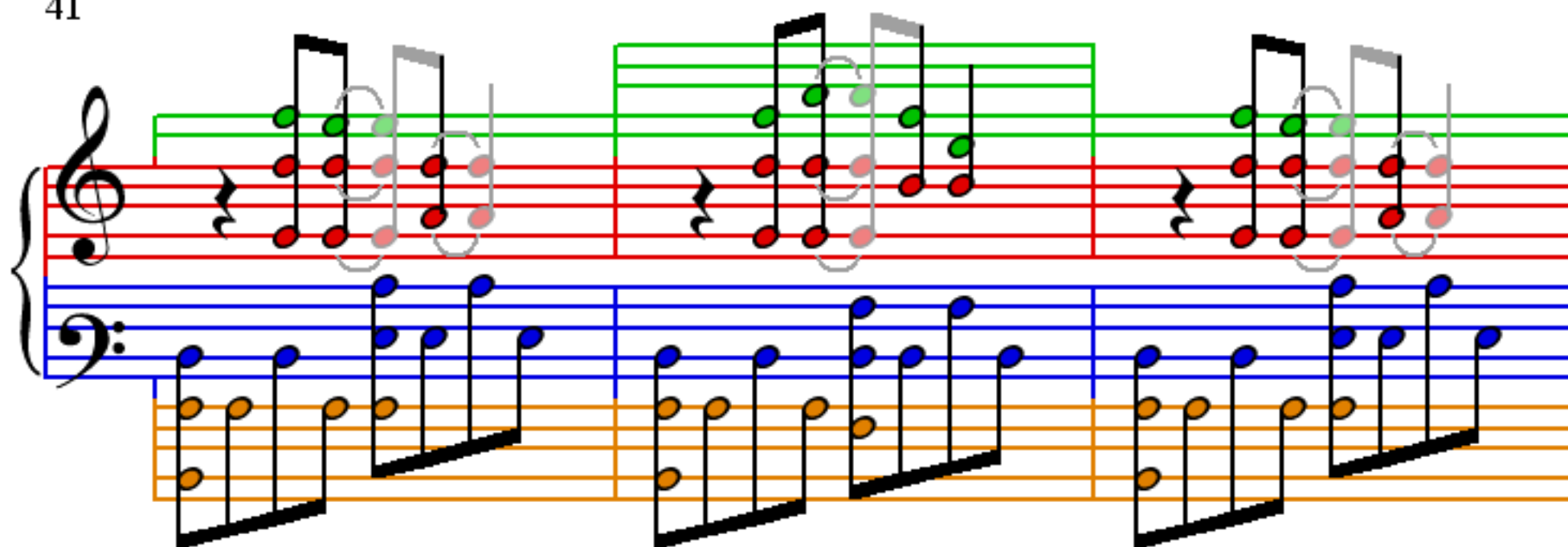
34



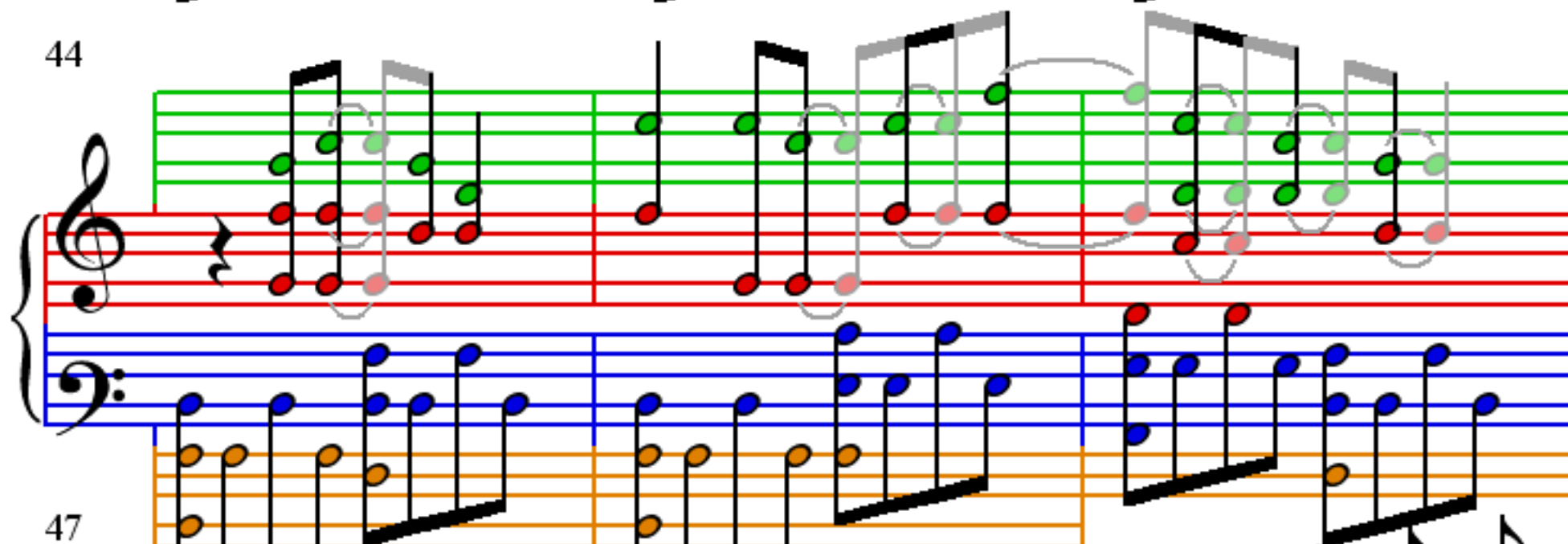
37



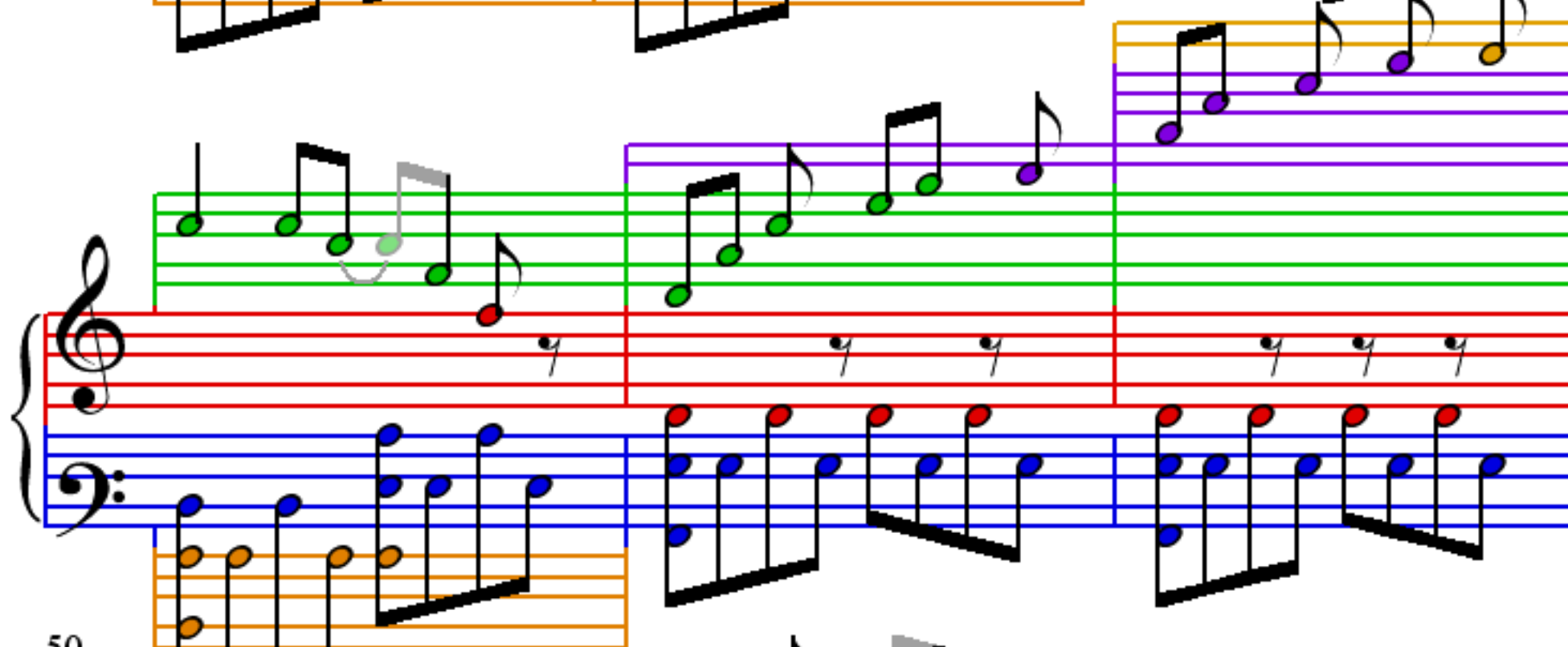
41



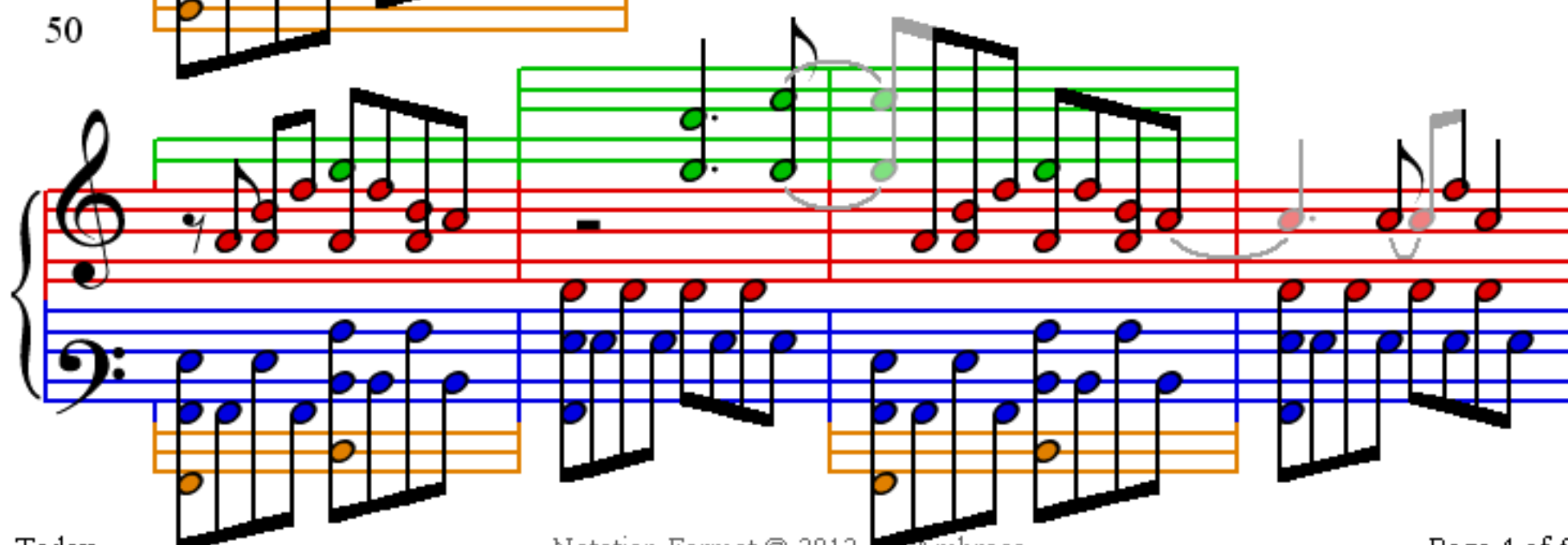
44



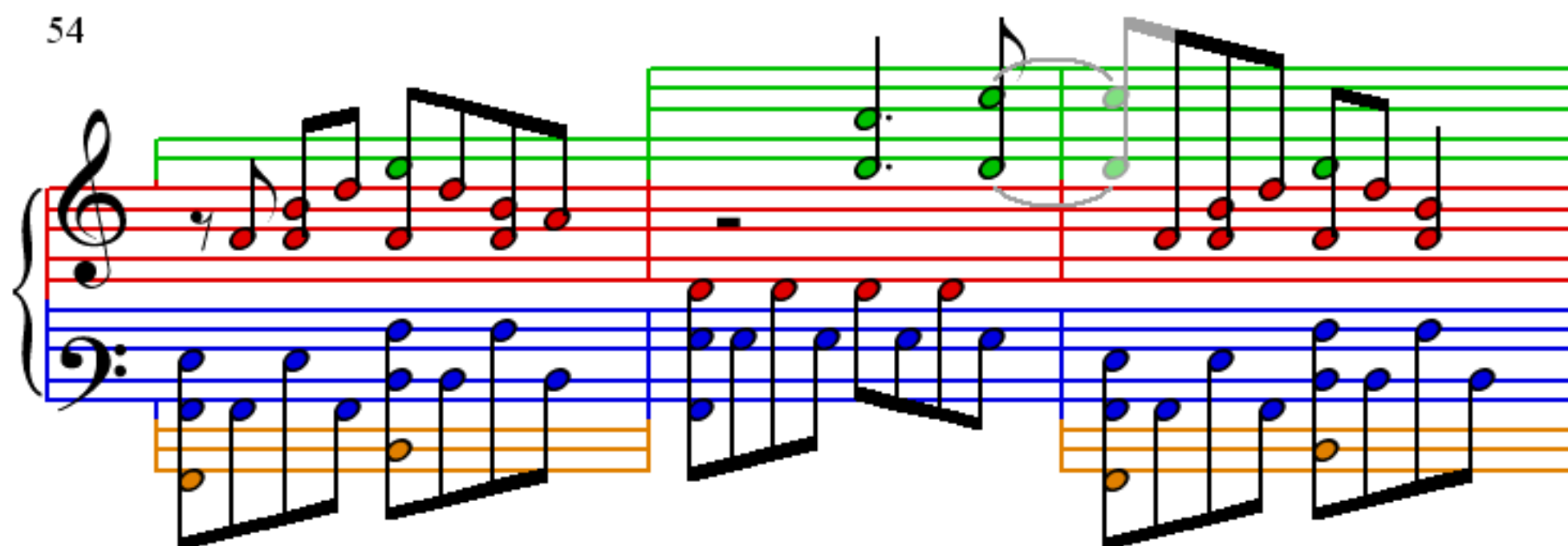
47



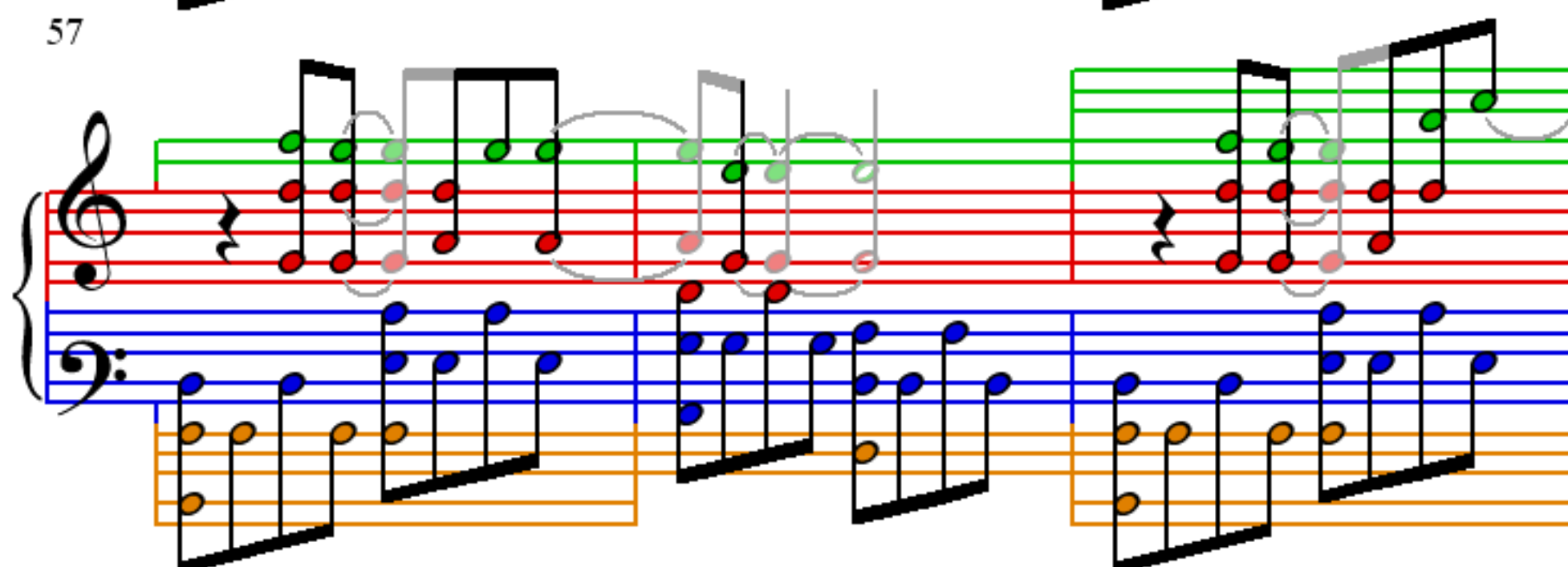
50



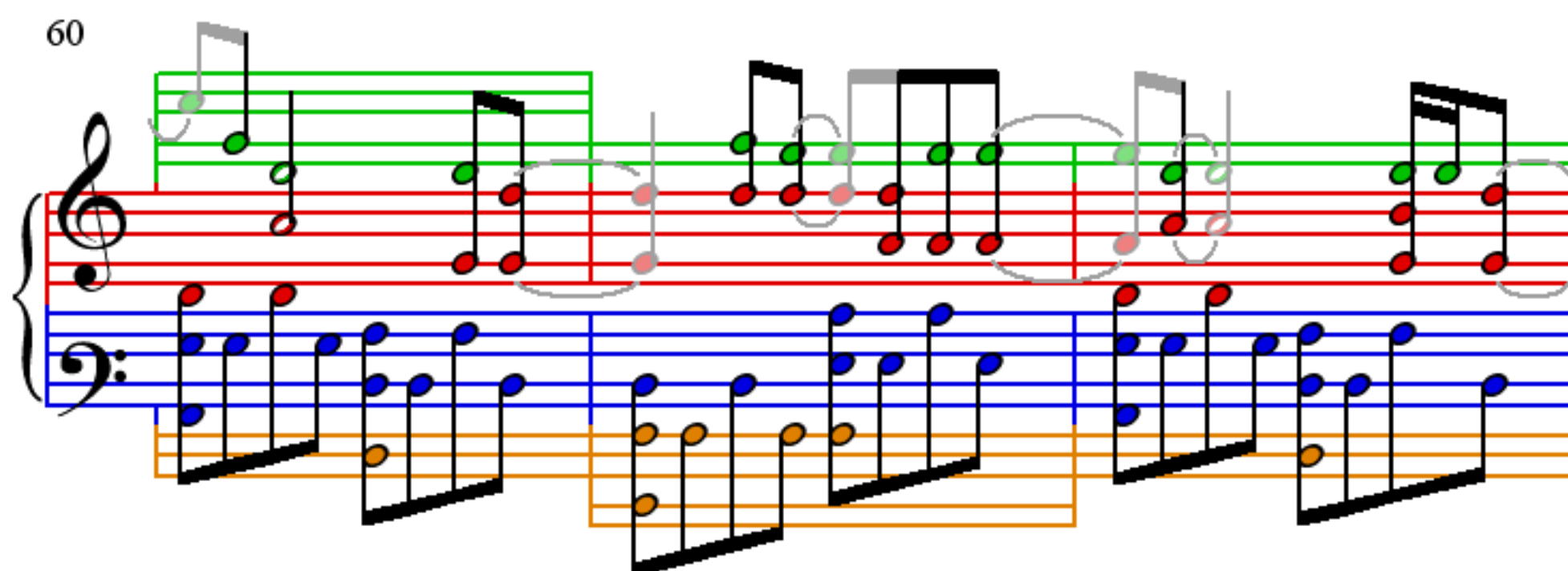
54



57



60



63

