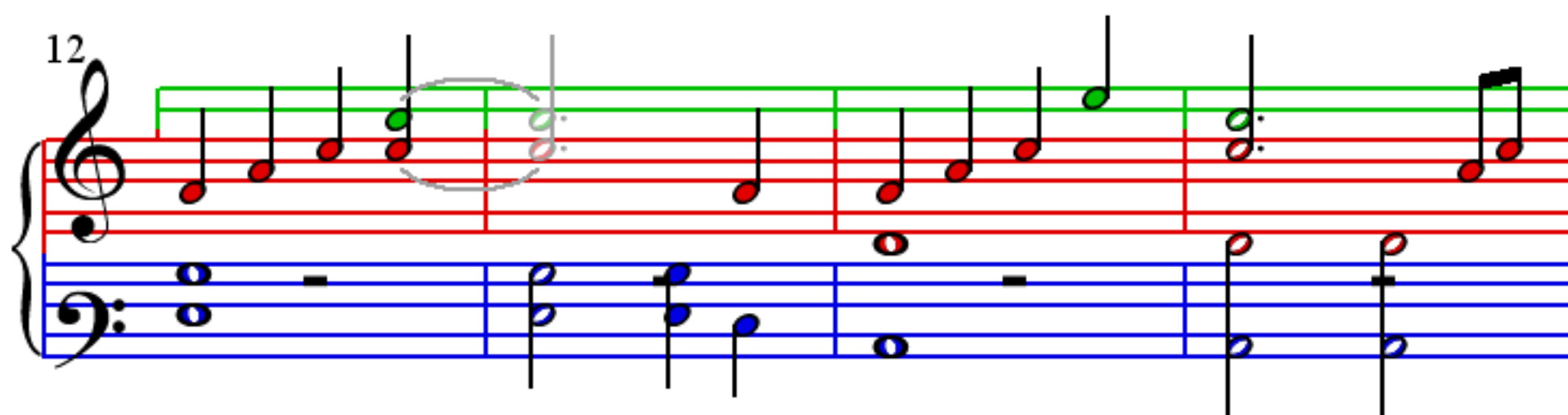
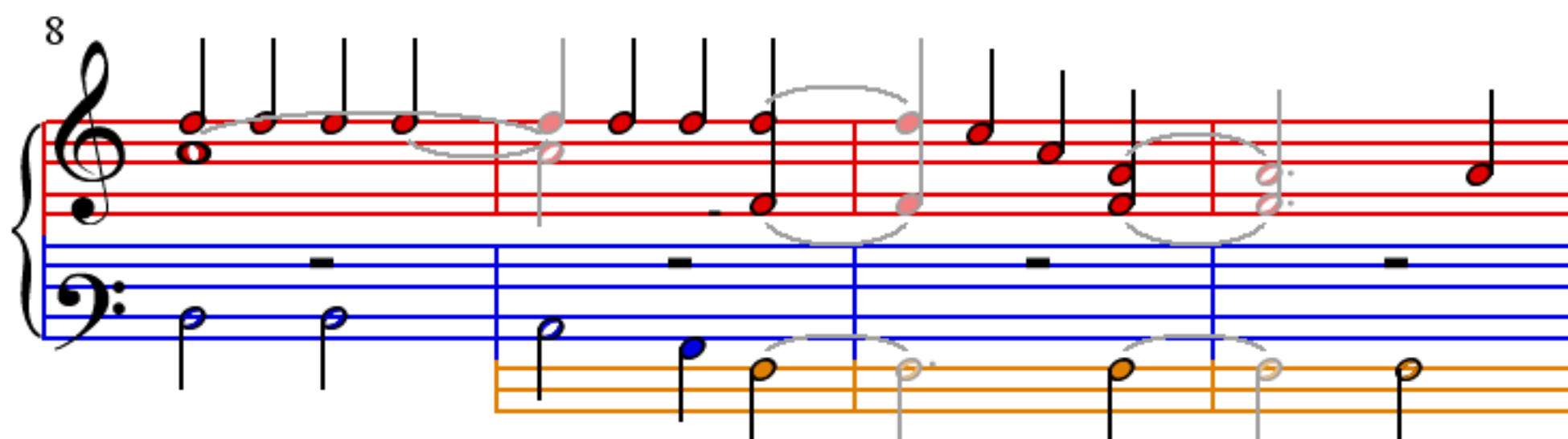
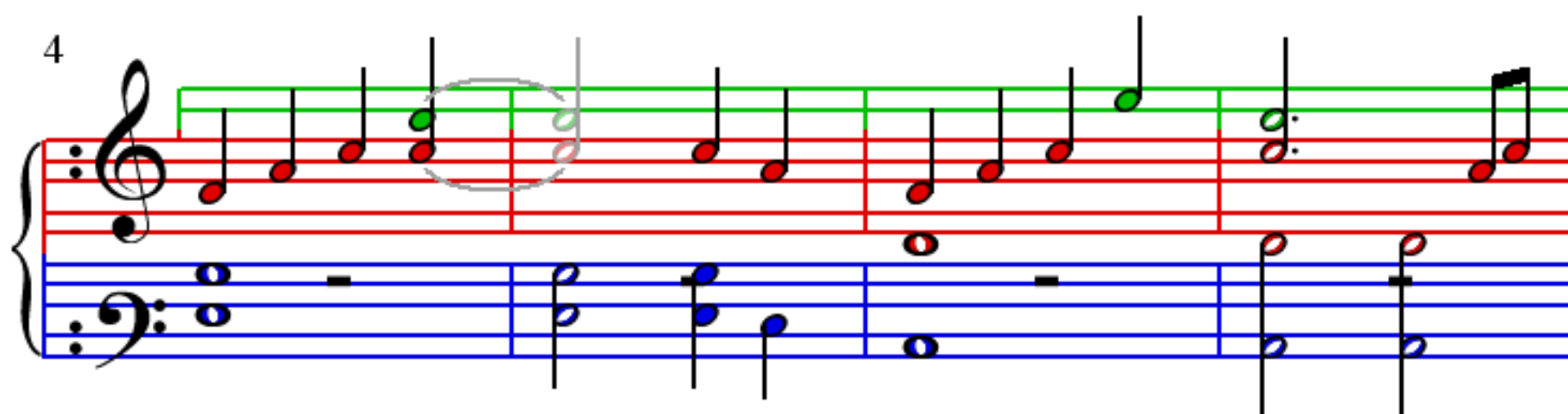
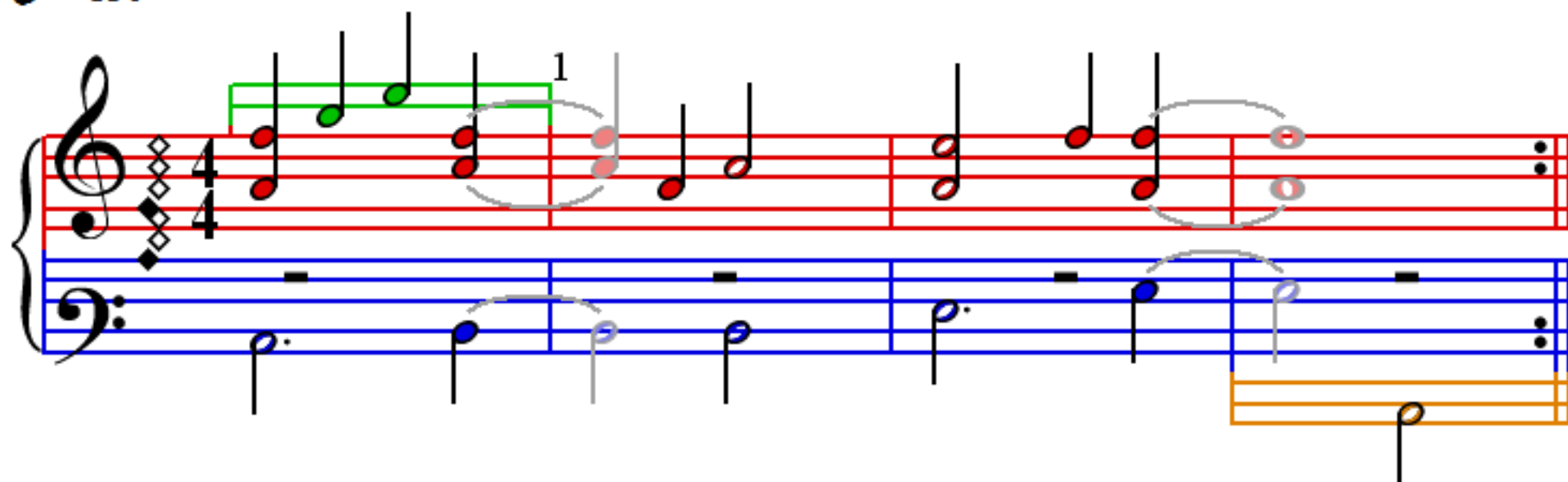


# A Little More Time on You

Carl Sturken

♩ = 150



16

Measures 16-19. Treble clef: Red notes, grey slurs. Bass clef: Blue notes, grey slurs. Orange staff: Orange notes.

20

Measures 20-23. Treble clef: Red notes, grey slurs. Bass clef: Blue notes, grey slurs. Orange staff: Orange notes.

24

Measures 24-27. Treble clef: Red notes, grey slurs. Bass clef: Blue notes, grey slurs. Orange staff: Orange notes.

28

Measures 28-31. Treble clef: Red notes, grey slurs. Bass clef: Blue notes, grey slurs. Orange staff: Orange notes.

A musical score for the song 'The Rose Tree'. The score is written for three parts: Treble Clef (top), Bass Clef (middle), and a third part (bottom). The Treble Clef part is written on a red staff with green notes. The Bass Clef part is written on a blue staff with blue notes. The third part is written on an orange staff with orange notes. The score is divided into four measures. The first measure contains a treble clef and a key signature of one sharp (F#). The second measure contains a treble clef and a key signature of one sharp (F#). The third measure contains a treble clef and a key signature of one sharp (F#). The fourth measure contains a treble clef and a key signature of one sharp (F#). The notes are as follows:

Measure	Treble Clef (Red Staff)	Bass Clef (Blue Staff)	Third Part (Orange Staff)
1	G4, A4, B4, C5	G2, A2, B2, C3	G2, A2, B2, C3
2	D5, E5, F#5, G5	D3, E3, F#3, G3	D3, E3, F#3, G3
3	A5, B5, C6, D6	A3, B3, C4, D4	A3, B3, C4, D4
4	E6, F#6, G6, A6	E4, F#4, G4, A4	E4, F#4, G4, A4

A musical score for the song 'The Rose Tree'. The score is written for three parts: Treble Clef (red staves), Bass Clef (blue staves), and a lower staff (orange staves). The Treble Clef part starts with a treble clef and a key signature of one flat (B-flat). The Bass Clef part starts with a bass clef and a key signature of one flat (B-flat). The lower staff (orange) starts with a bass clef and a key signature of one flat (B-flat). The score is divided into four measures. The Treble Clef part has a melody of eighth and quarter notes. The Bass Clef part has a melody of quarter and half notes. The lower staff (orange) has a melody of quarter and half notes. The score is labeled with the number 36 in the top left corner.

A musical score for the song 'The Rose Tree'. The score is written for three parts: Treble Clef (top), Bass Clef (middle), and a third part (bottom). The Treble Clef part is written on a red staff with red notes. The Bass Clef part is written on a blue staff with blue notes. The third part is written on an orange staff with orange notes. The score is divided into four measures. The first measure contains the lyrics 'The Rose Tree'. The second measure contains the lyrics 'The Rose Tree'. The third measure contains the lyrics 'The Rose Tree'. The fourth measure contains the lyrics 'The Rose Tree'. The score is marked with a 40 at the beginning of the first measure.

44

The musical score for Example 10.14 is presented in a four-measure format. The vocal line, written in the treble clef, begins with a whole rest in the first measure. In the second measure, it starts with a quarter note on G4, followed by eighth notes on A4, B4, and C5. The third measure continues with eighth notes on D5, E5, and F5, and a quarter note on G5. The fourth measure features a quarter note on A5, followed by eighth notes on B5 and C6, and a final quarter note on D6. The piano accompaniment, written in the bass clef, consists of a steady eighth-note bass line in the right hand and a simple harmonic accompaniment in the left hand. The piano part provides a consistent harmonic support throughout the four measures.

48

1

52

1

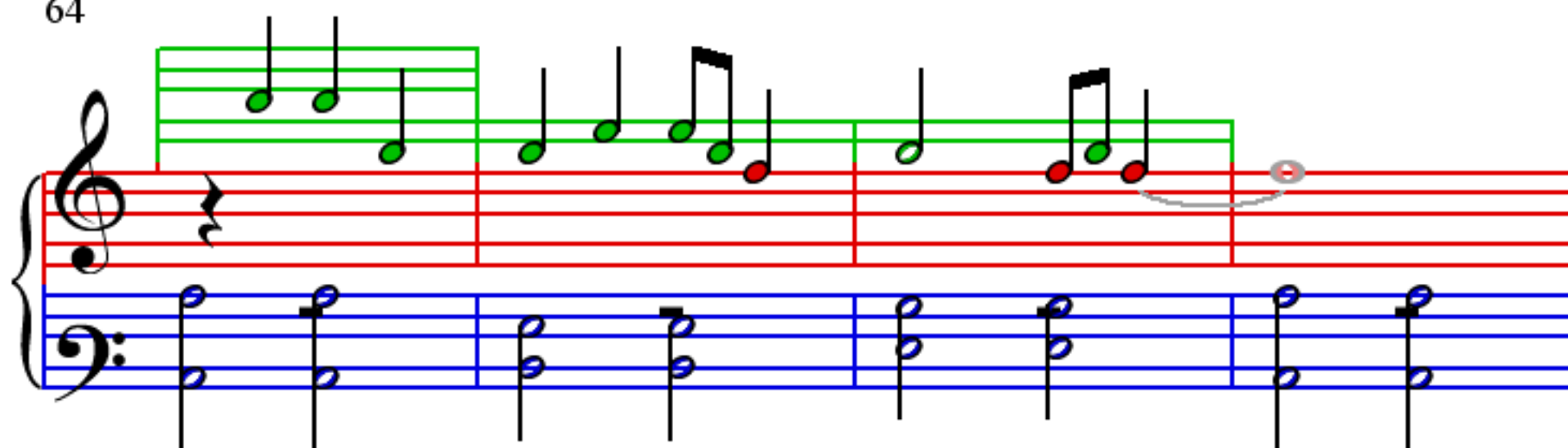
56

1

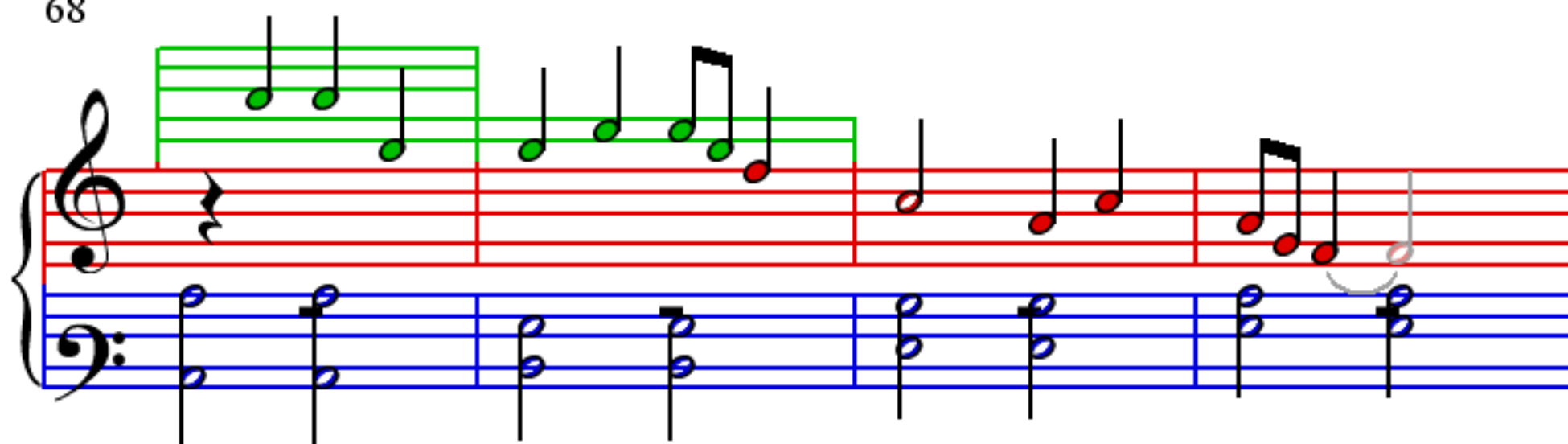
60

1

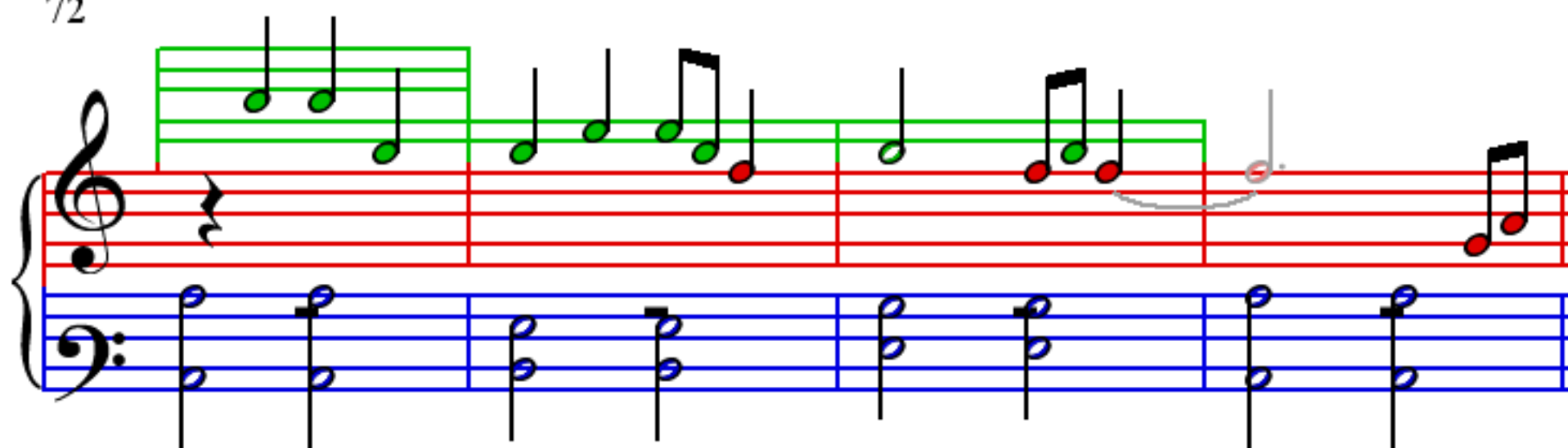
64



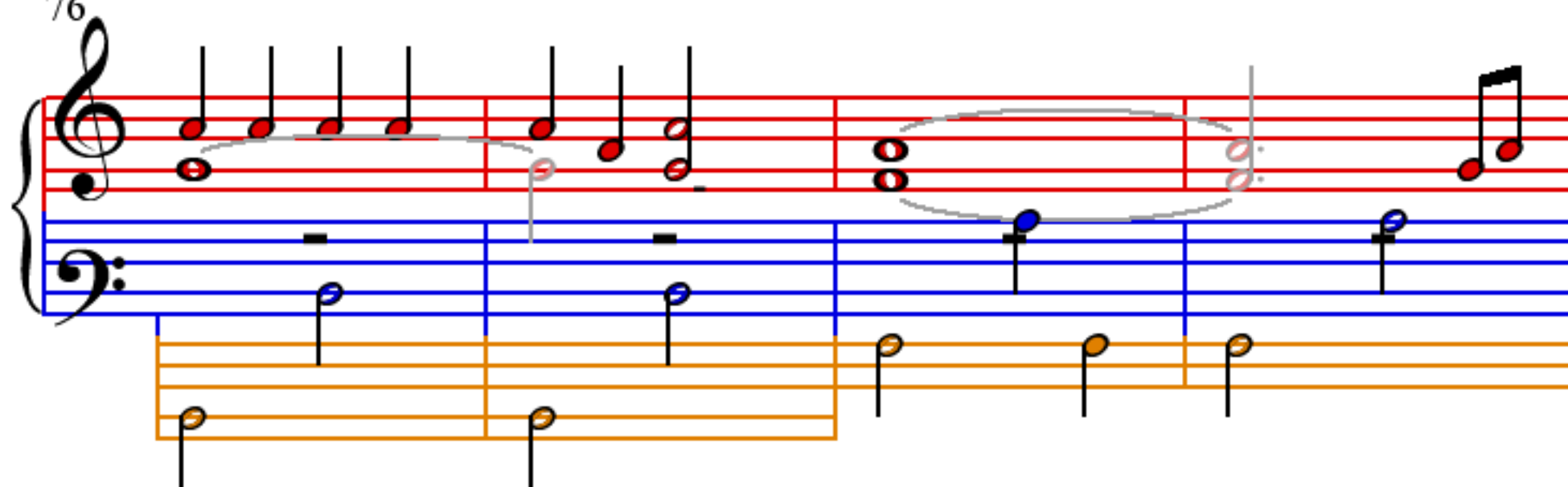
68



72



76



80

Measures 80-83. Treble clef: Red notes (quarter, eighth, quarter, quarter, quarter, quarter, quarter, quarter), Green notes (quarter, quarter, quarter, quarter, quarter, quarter, quarter, quarter), and a grey slur over a half note. Bass clef: Blue notes (half, half, half, half). Orange staves: Orange notes (quarter, quarter, quarter, quarter, quarter, quarter, quarter, quarter).

84

Measures 84-87. Treble clef: Red notes (quarter, quarter, quarter, quarter, quarter, quarter, quarter, quarter) and a grey slur over a half note. Bass clef: Blue notes (half, half, half, half). Orange staves: Orange notes (quarter, quarter, quarter, quarter, quarter, quarter, quarter, quarter).

88

Measures 88-91. Treble clef: Red notes (quarter, quarter, quarter, quarter, quarter, quarter, quarter, quarter), Green notes (quarter, quarter, quarter, quarter, quarter, quarter, quarter, quarter), and a grey slur over a half note. Bass clef: Blue notes (half, half, half, half). Orange staves: Orange notes (quarter, quarter, quarter, quarter, quarter, quarter, quarter, quarter).

92

Measures 92-95. Treble clef: Red notes (quarter, quarter, quarter, quarter, quarter, quarter, quarter, quarter) and a grey slur over a half note. Bass clef: Blue notes (half, half, half, half). Orange staves: Orange notes (quarter, quarter, quarter, quarter, quarter, quarter, quarter, quarter).

96

Measures 96-99. Treble clef: Red notes (half notes), Green notes (quarter notes). Bass clef: Blue notes (half notes), Orange notes (quarter notes). Measure 99: Greyed-out note in the treble.

100

Measures 100-103. Treble clef: Red notes (half notes), Green notes (quarter notes). Bass clef: Blue notes (half notes), Orange notes (quarter notes). Measure 103: Greyed-out note in the treble.

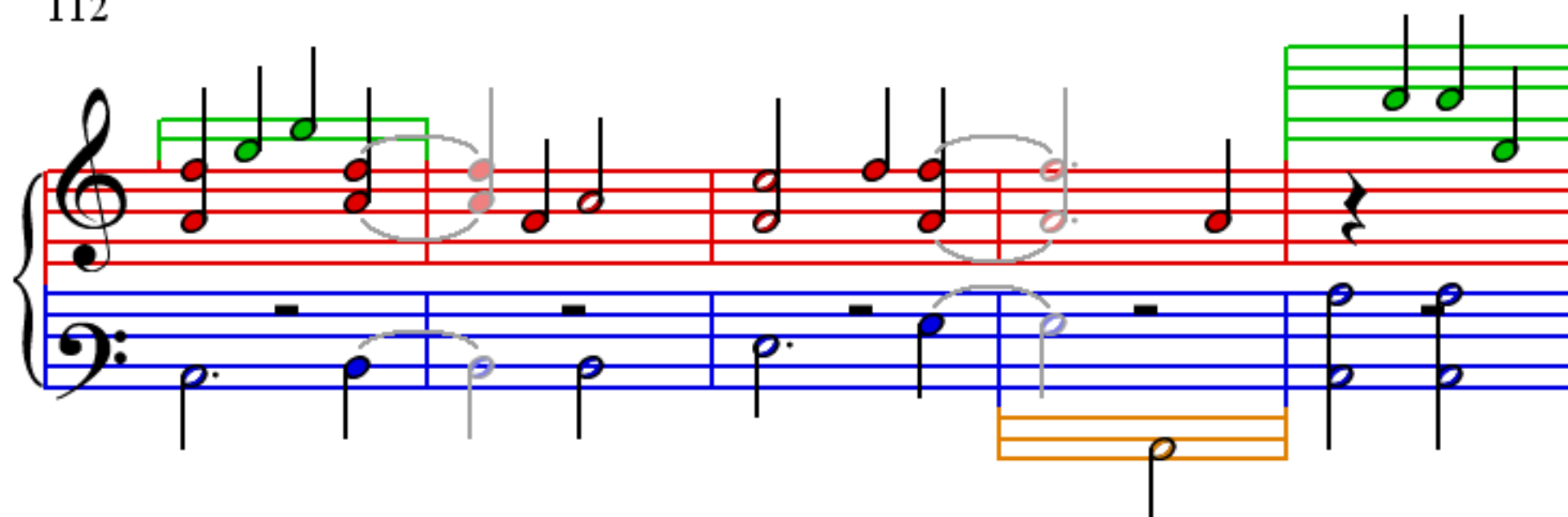
104

Measures 104-107. Treble clef: Red notes (half notes), Green notes (quarter notes). Bass clef: Blue notes (half notes), Orange notes (quarter notes). Measure 107: Greyed-out note in the treble.

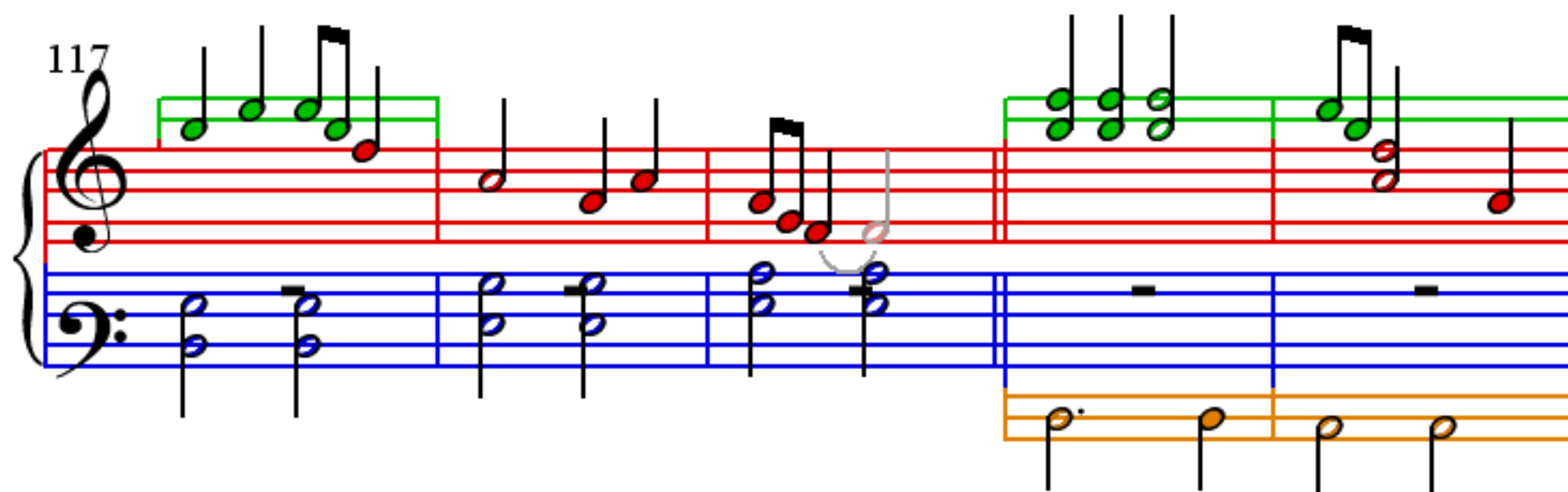
108

Measures 108-111. Treble clef: Red notes (half notes), Green notes (quarter notes). Bass clef: Blue notes (half notes), Orange notes (quarter notes). Measure 111: Greyed-out note in the treble.

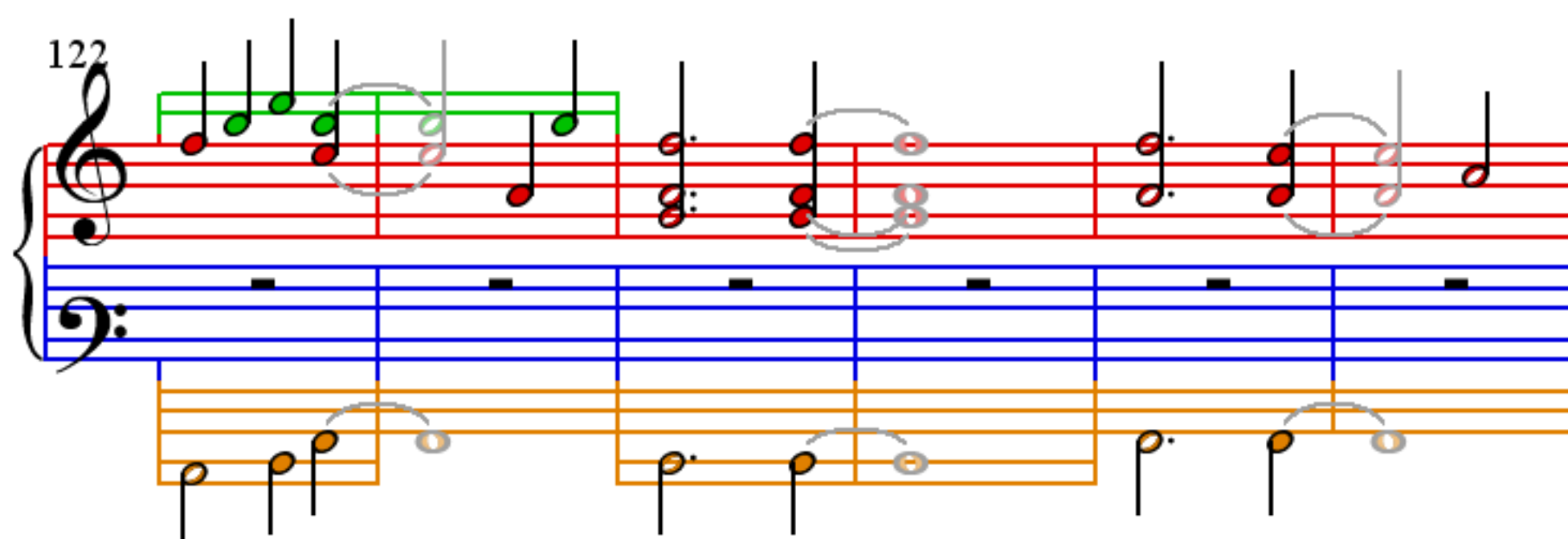
112



117



122



128

