

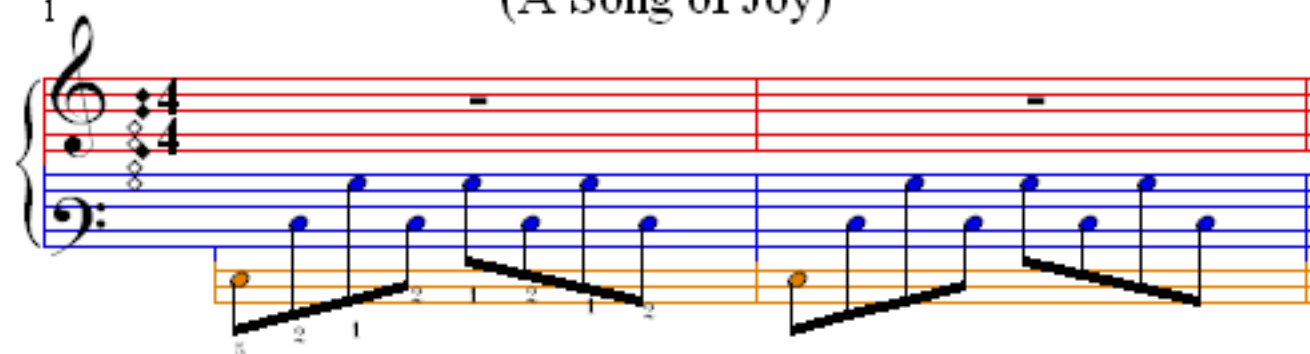
# Ode to Joy

(A Song of Joy)

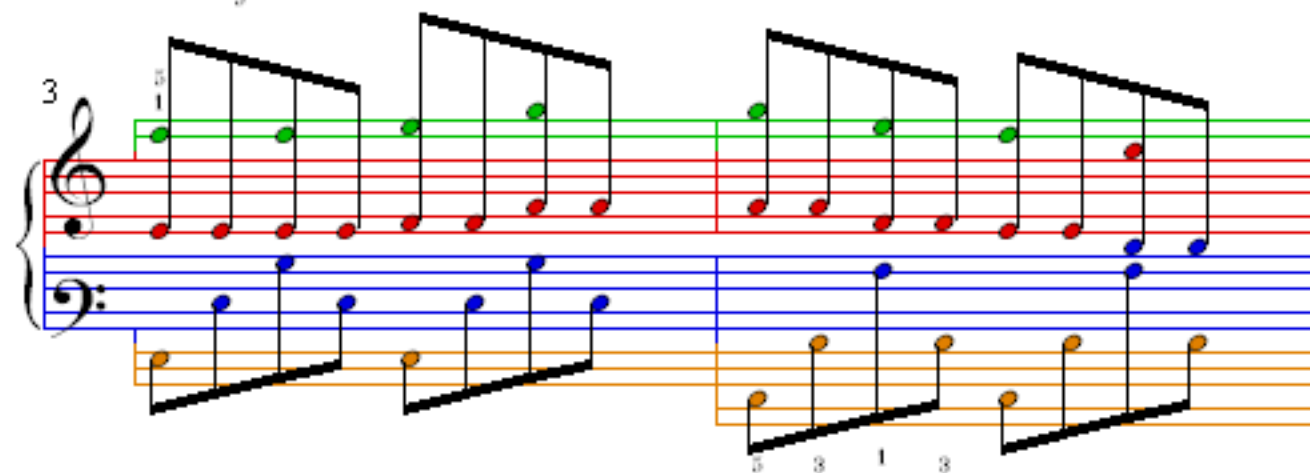
Beethoven

♩ = 88

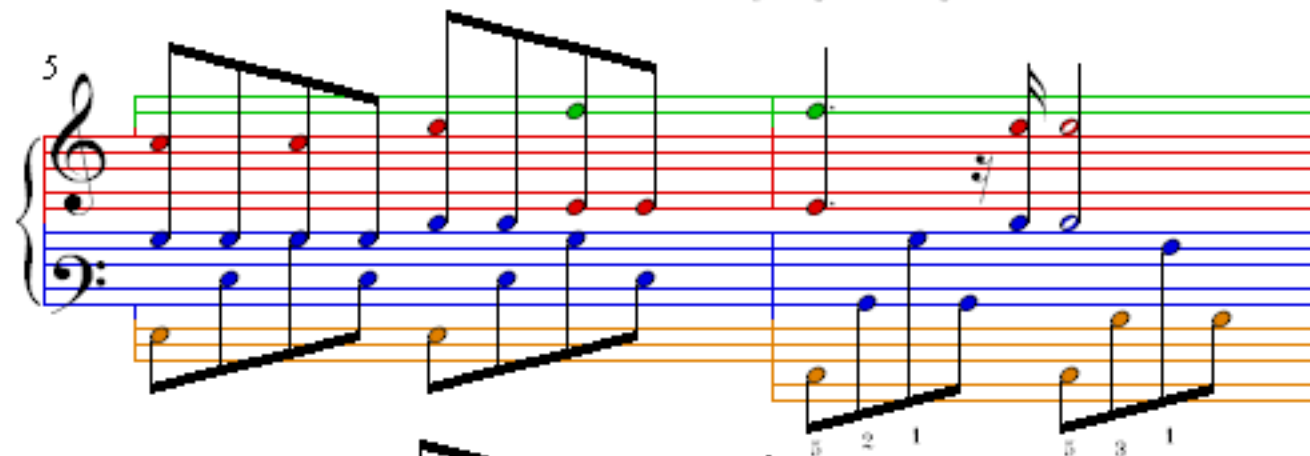
1



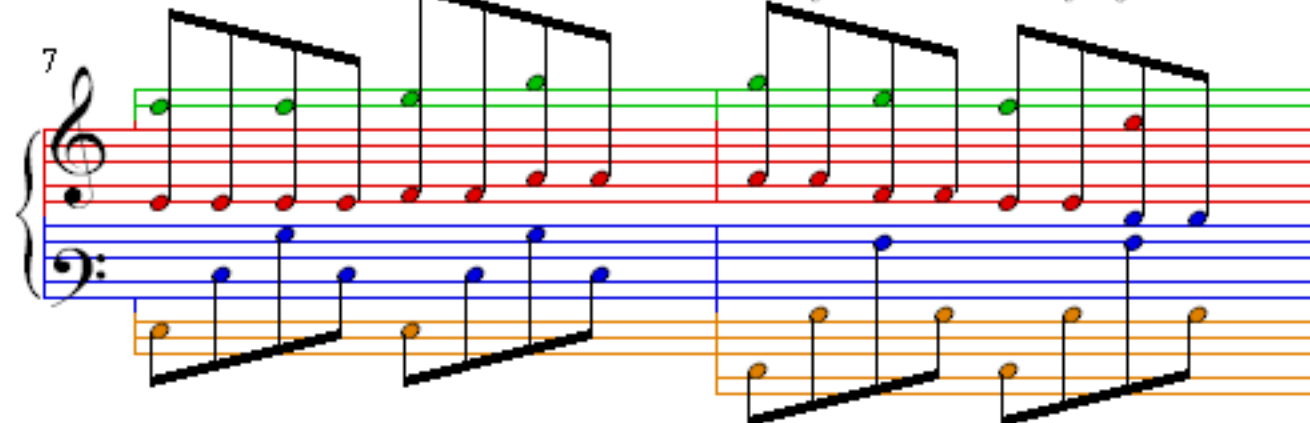
3



5



7



9

12

14

17

3

20

Measures 20-22 of the piano score for 'Ode to Joy'. The treble clef staff features a melody of eighth notes, with notes in measures 20 and 21 colored green and notes in measure 22 colored red. The bass clef staff provides a harmonic accompaniment with eighth notes, with notes in measures 20 and 21 colored blue and notes in measure 22 colored red. Fingerings are indicated by numbers 1-5 below the notes. Measure 20 has a green '5' and a blue '1' below the first notes. Measure 21 has a green '2' and a blue '1' below the first notes. Measure 22 has a red '5' and a blue '2' below the first notes, and a red '1' below the second note.

23

Measures 23-25 of the piano score for 'Ode to Joy'. The treble clef staff continues the melody with eighth notes, all colored green. The bass clef staff continues the accompaniment with eighth notes, all colored blue. Measure 23 has a blue '5' and a blue '1' below the first notes. Measure 24 has a blue '2' and a blue '1' below the first notes. Measure 25 has a blue '5' and a blue '2' below the first notes, and a blue '1' below the second note.

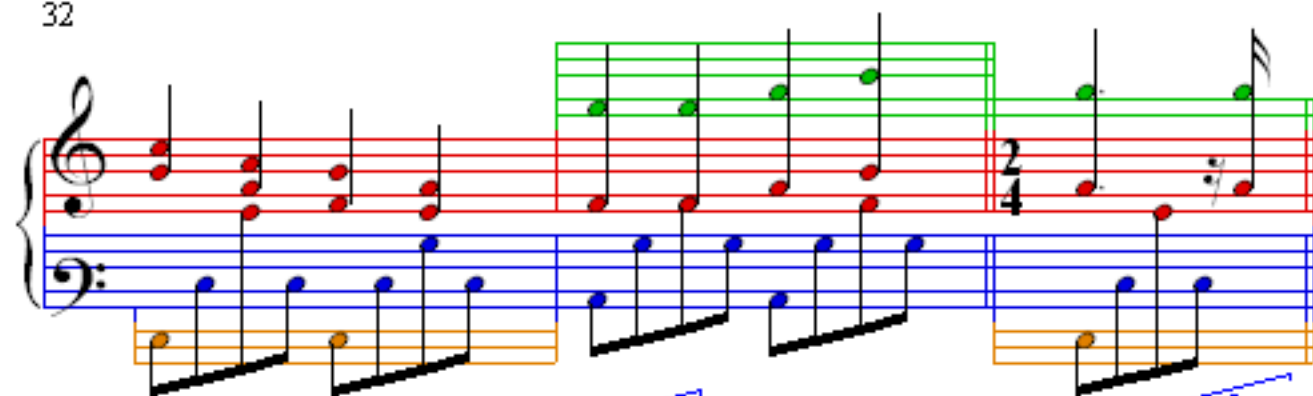
26

Measures 26-28 of the piano score for 'Ode to Joy'. The treble clef staff features a melody of eighth notes, with notes in measures 26 and 27 colored green and notes in measure 28 colored red. The bass clef staff provides a harmonic accompaniment with eighth notes, with notes in measures 26 and 27 colored blue and notes in measure 28 colored red. Fingerings are indicated by numbers 1-5 below the notes. Measure 26 has a blue '5' and a blue '1' below the first notes. Measure 27 has a blue '2' and a blue '1' below the first notes. Measure 28 has a red '5' and a blue '2' below the first notes, and a red '1' below the second note.

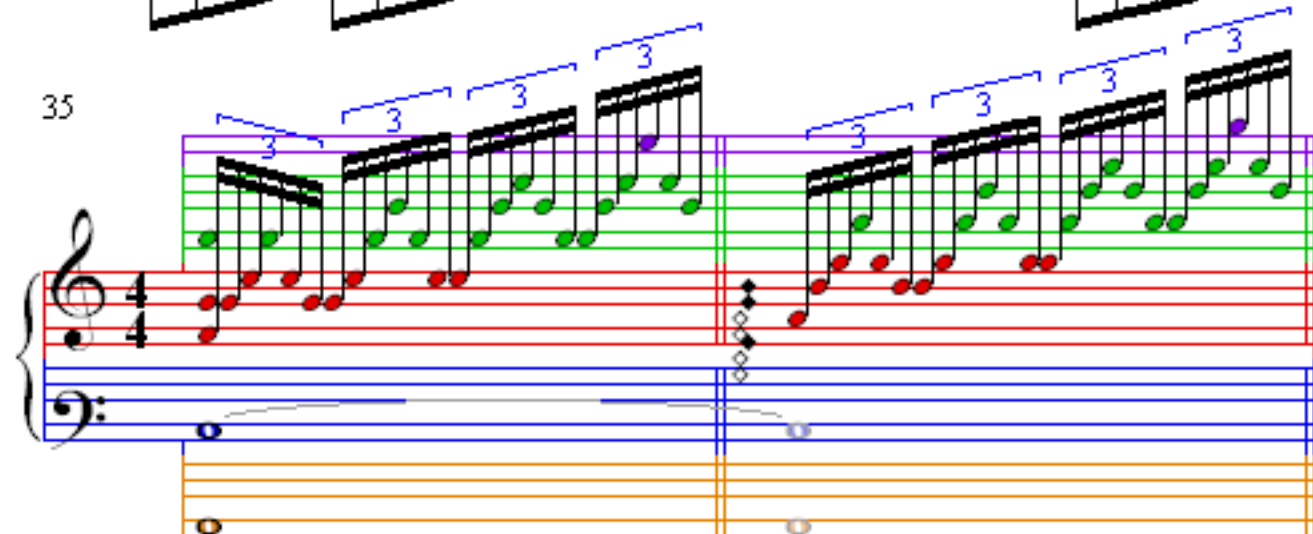
29

Measures 29-31 of the piano score for 'Ode to Joy'. The treble clef staff features a melody of eighth notes, with notes in measures 29 and 30 colored green and notes in measure 31 colored red. The bass clef staff provides a harmonic accompaniment with eighth notes, with notes in measures 29 and 30 colored blue and notes in measure 31 colored red. Measure 29 has a blue '5' and a blue '1' below the first notes. Measure 30 has a blue '2' and a blue '1' below the first notes. Measure 31 has a red '5' and a blue '2' below the first notes, and a red '1' below the second note.

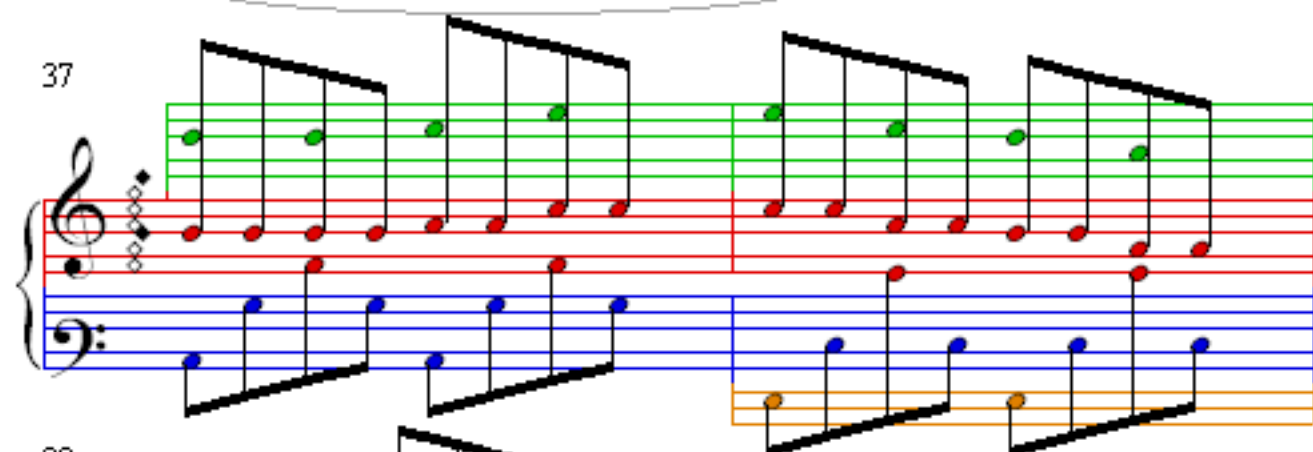
32



35



37



39

