

# DreamPIANO

Unknown

$\text{♩} = 120$

1

Measures 1 and 2 of the piece. The key signature is two flats (B-flat and E-flat), and the time signature is 2/4. The music is written for piano on a grand staff. The right hand (treble clef) features a melody with eighth and quarter notes, while the left hand (bass clef) provides a simple accompaniment of quarter notes. The notes are color-coded: green for the right hand and blue for the left hand. A black bar is placed over the first measure of the right hand.

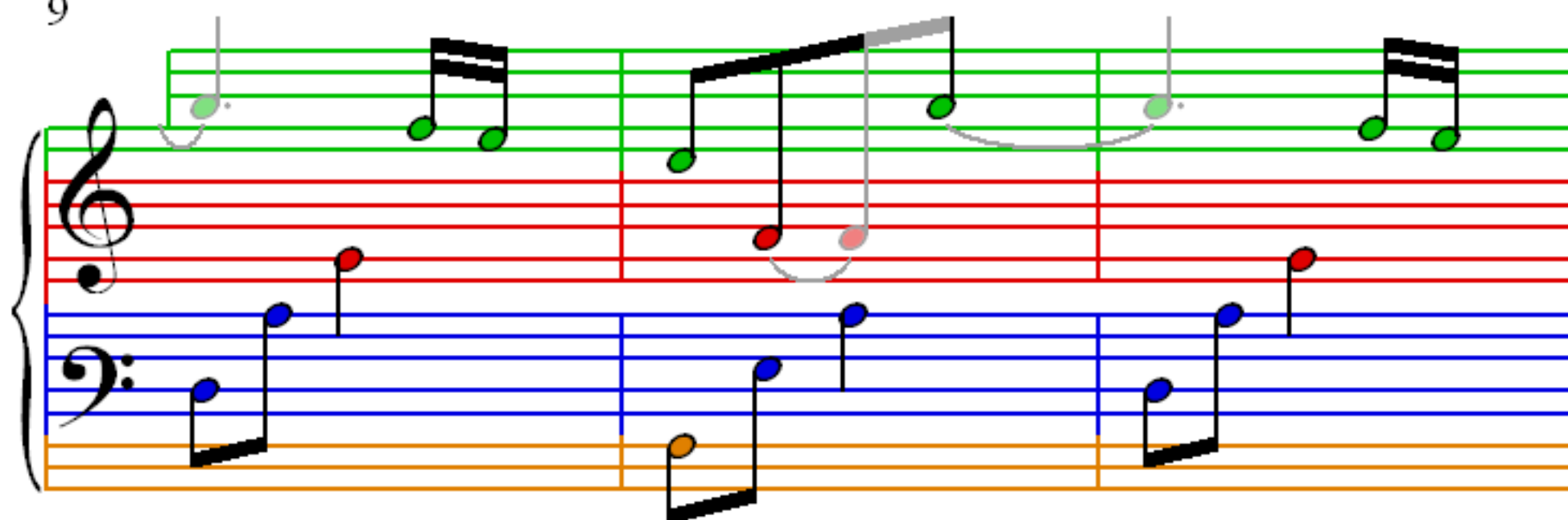
3

Measures 3 and 4 of the piece. The right hand continues the melody with eighth and quarter notes. The left hand accompaniment remains consistent. The notes are color-coded: green for the right hand and blue for the left hand. A black bar is placed over the first measure of the right hand.

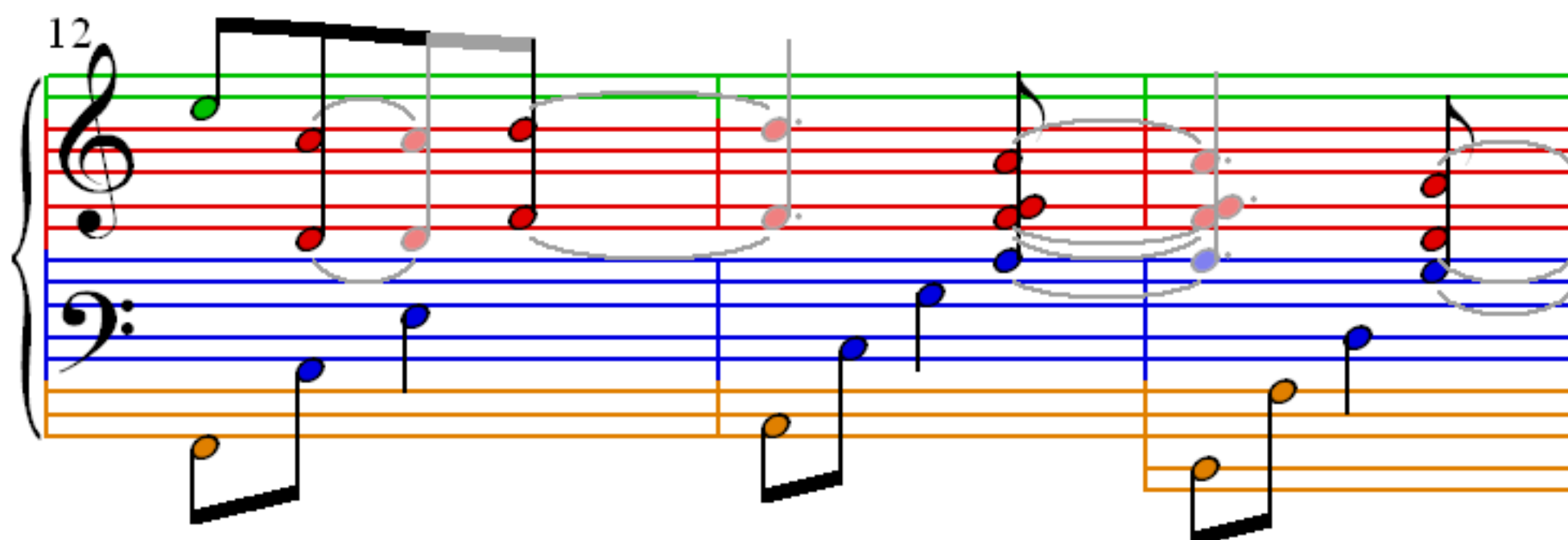
6

Measures 5 and 6 of the piece. The right hand continues the melody with eighth and quarter notes. The left hand accompaniment remains consistent. The notes are color-coded: green for the right hand and blue for the left hand. A black bar is placed over the first measure of the right hand.

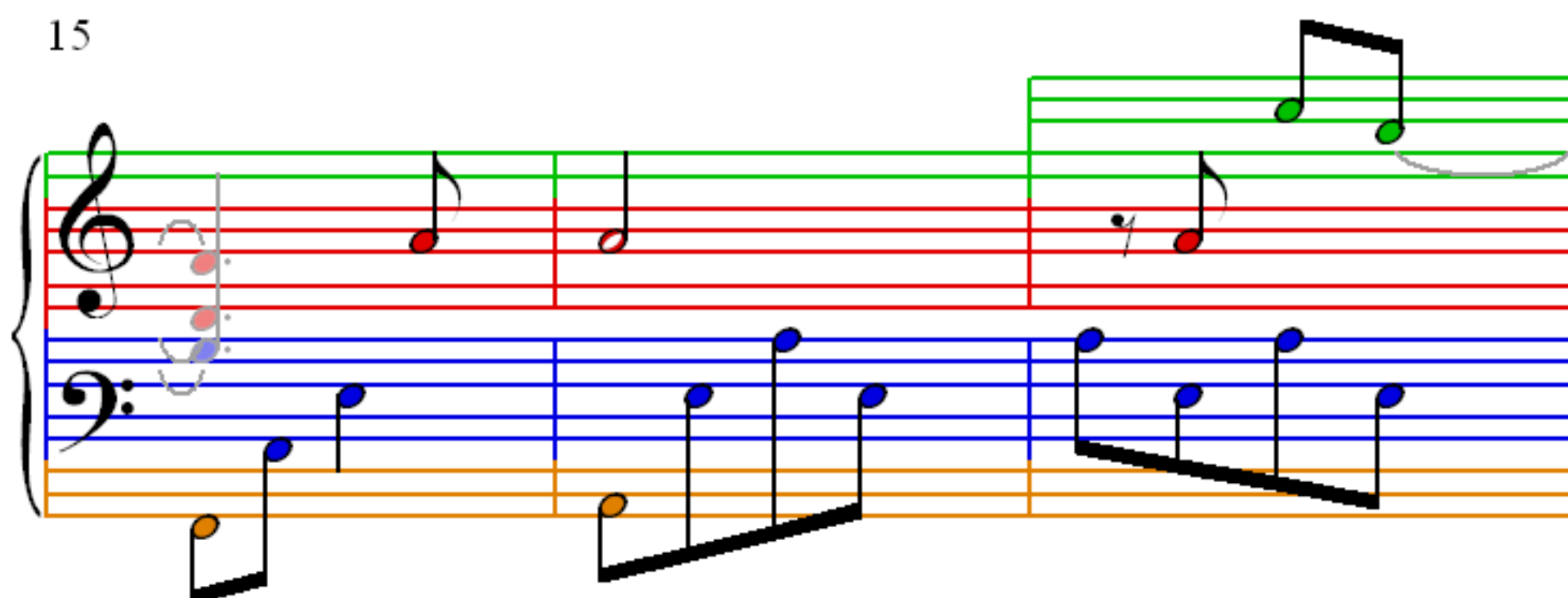
9



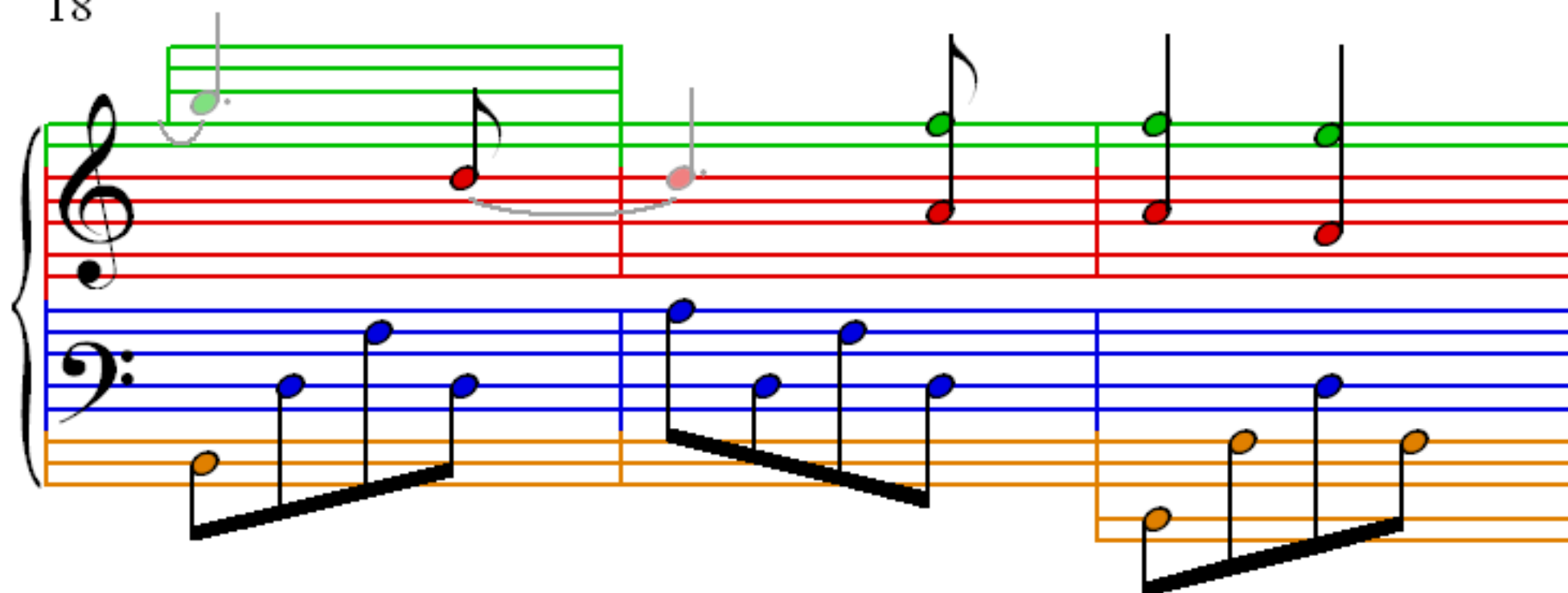
12



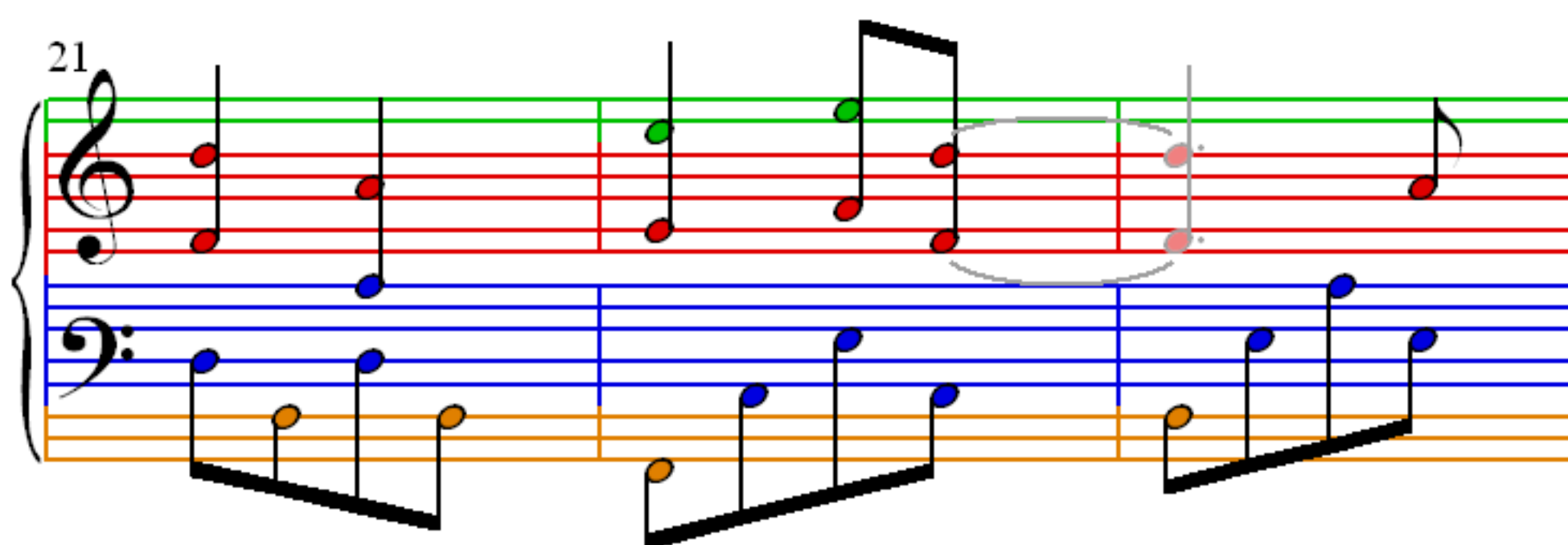
15



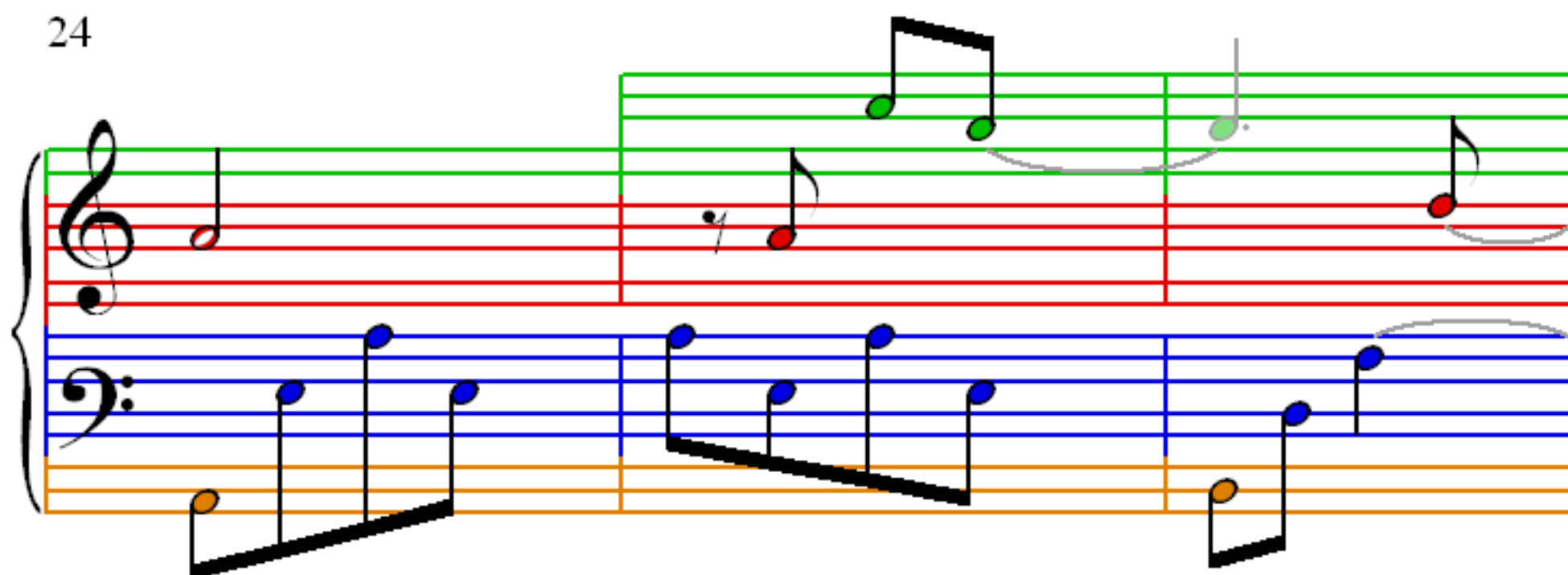
18



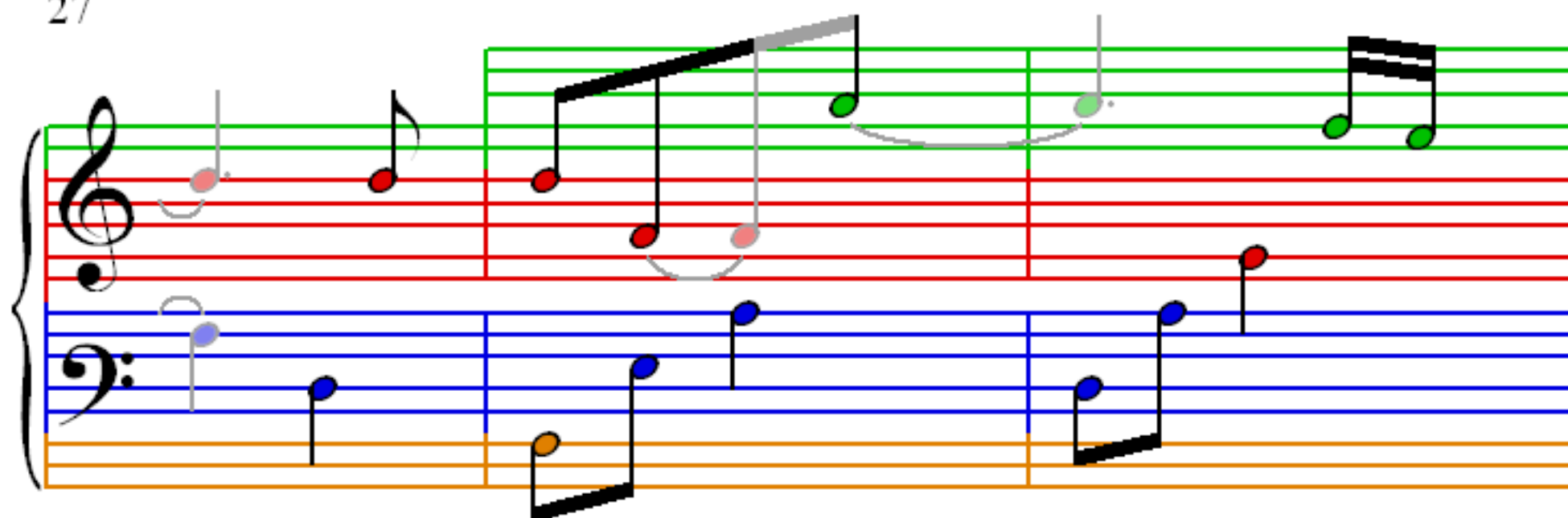
21



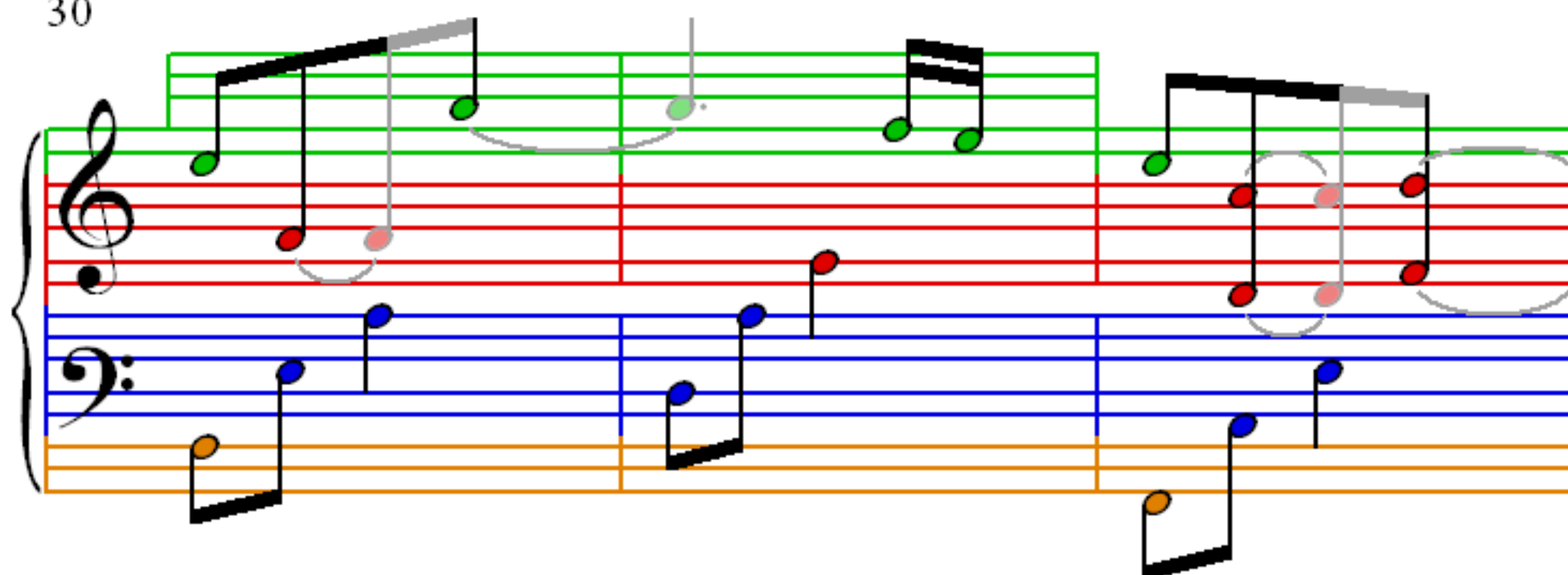
24



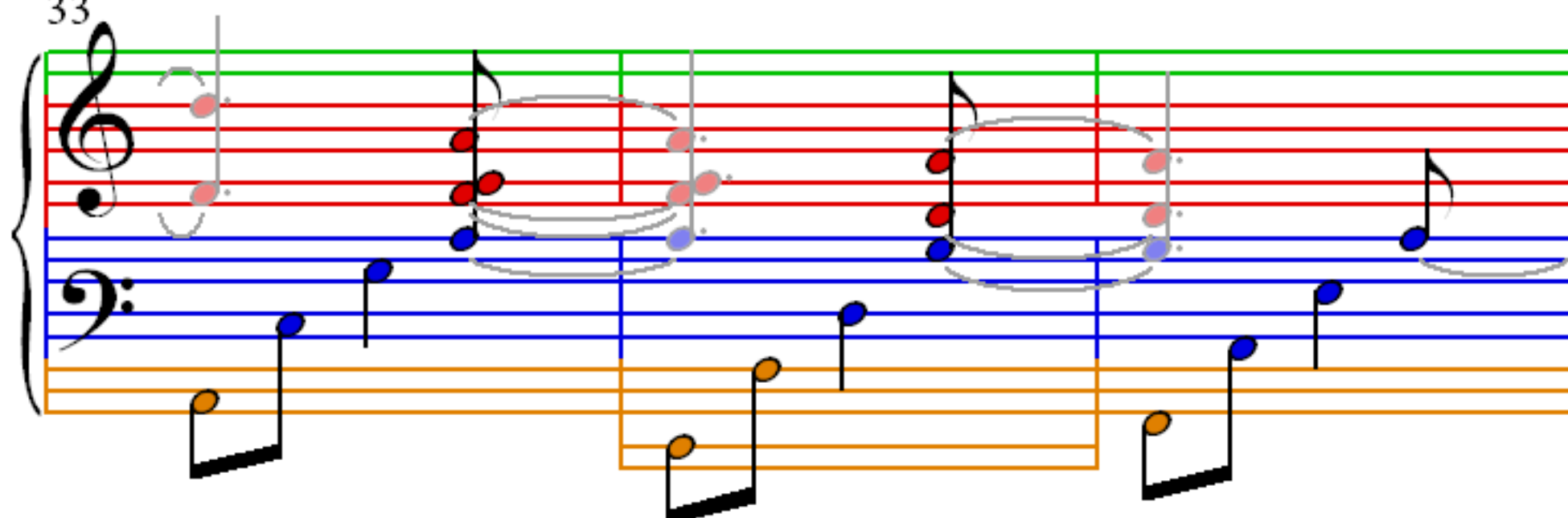
27



30



33



36

39

42

45

45

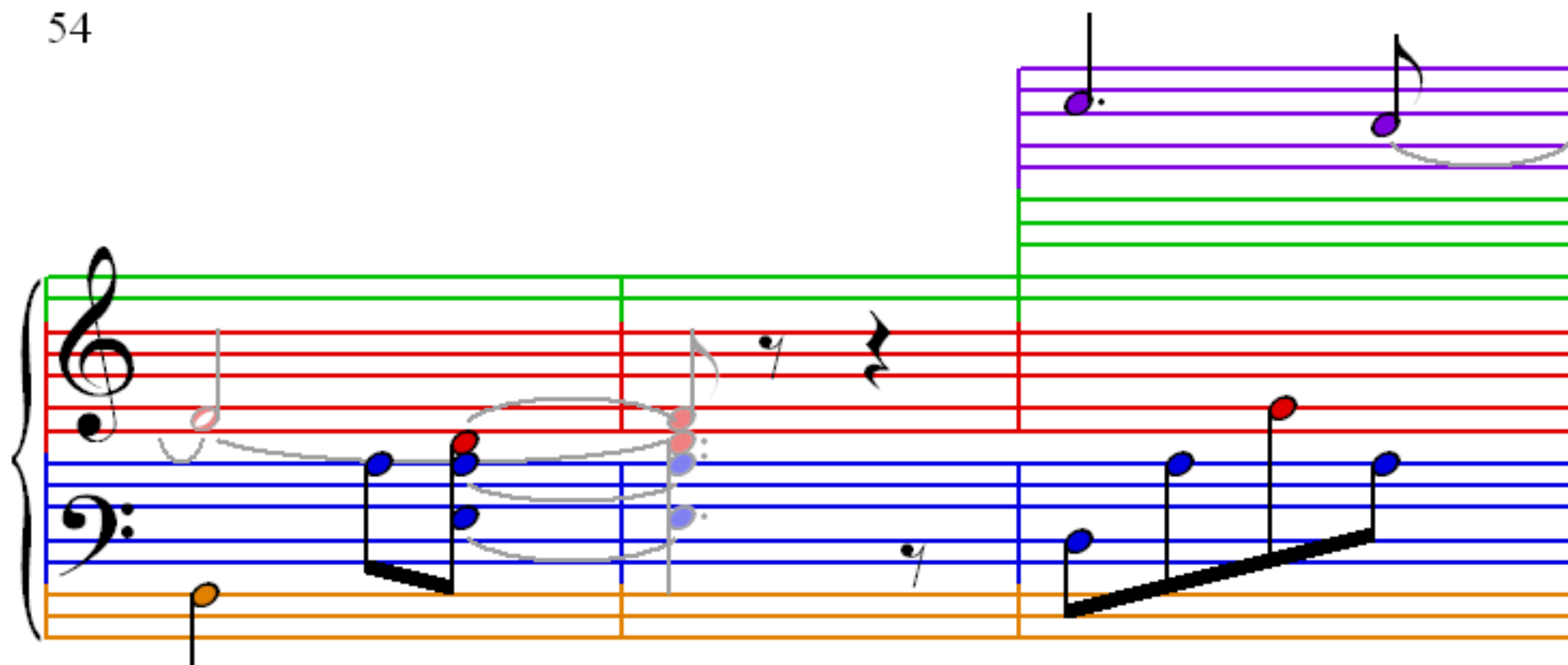
48

48

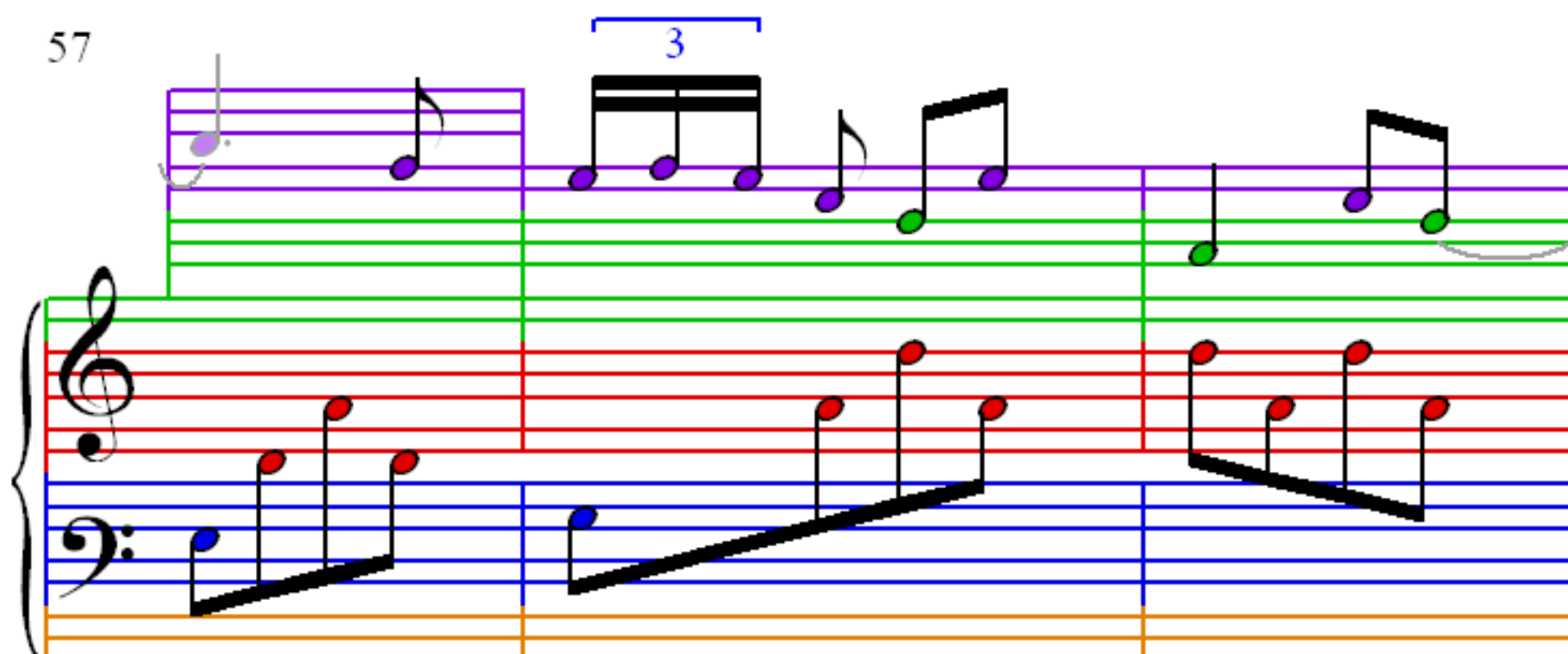
51

51

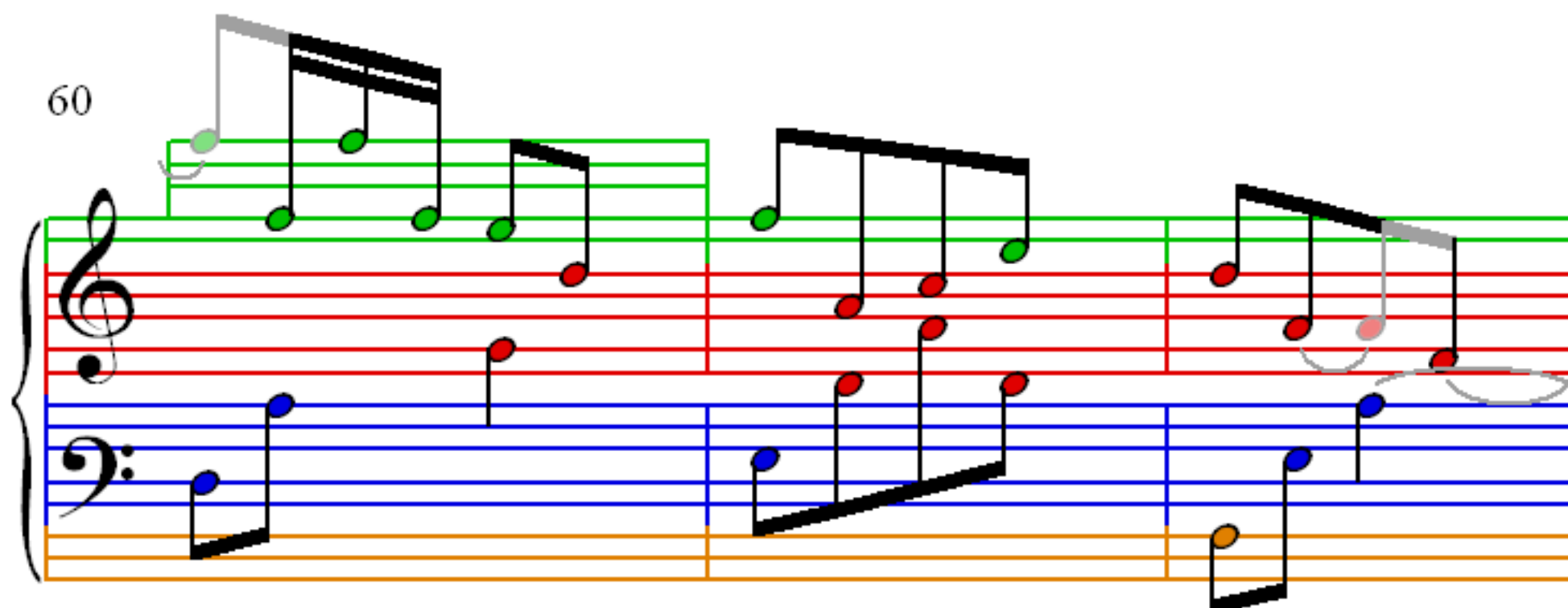
54

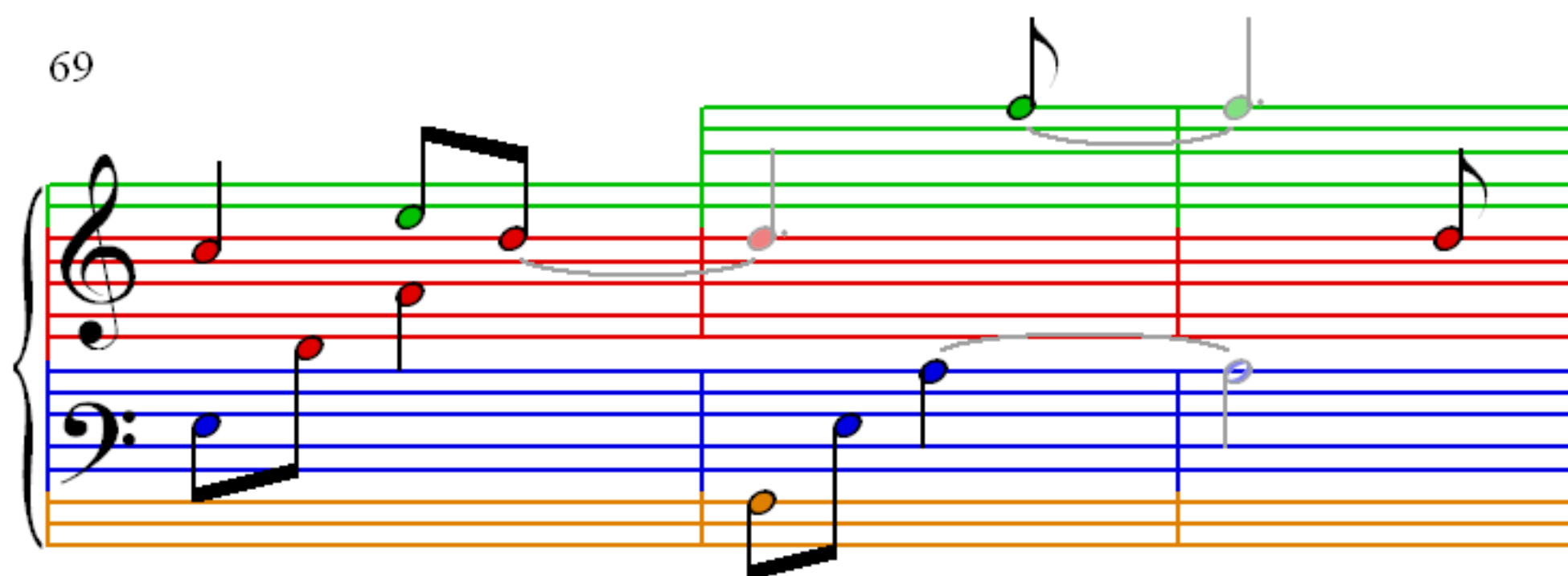
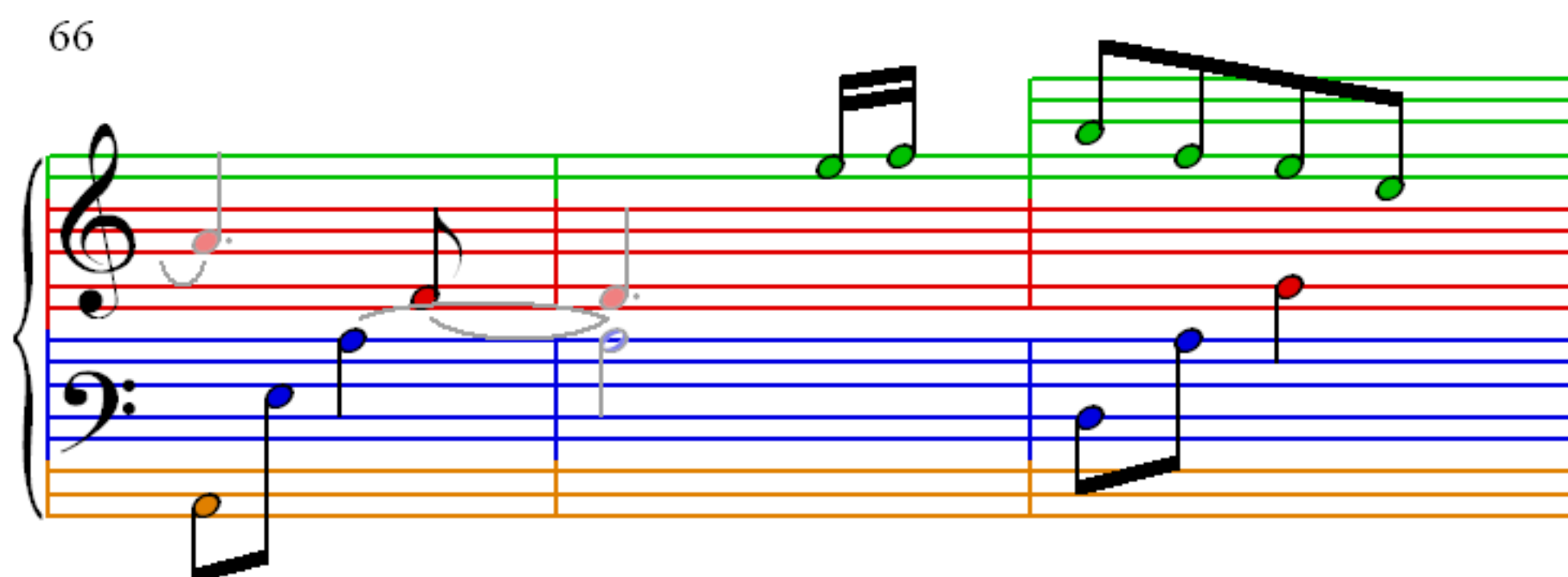
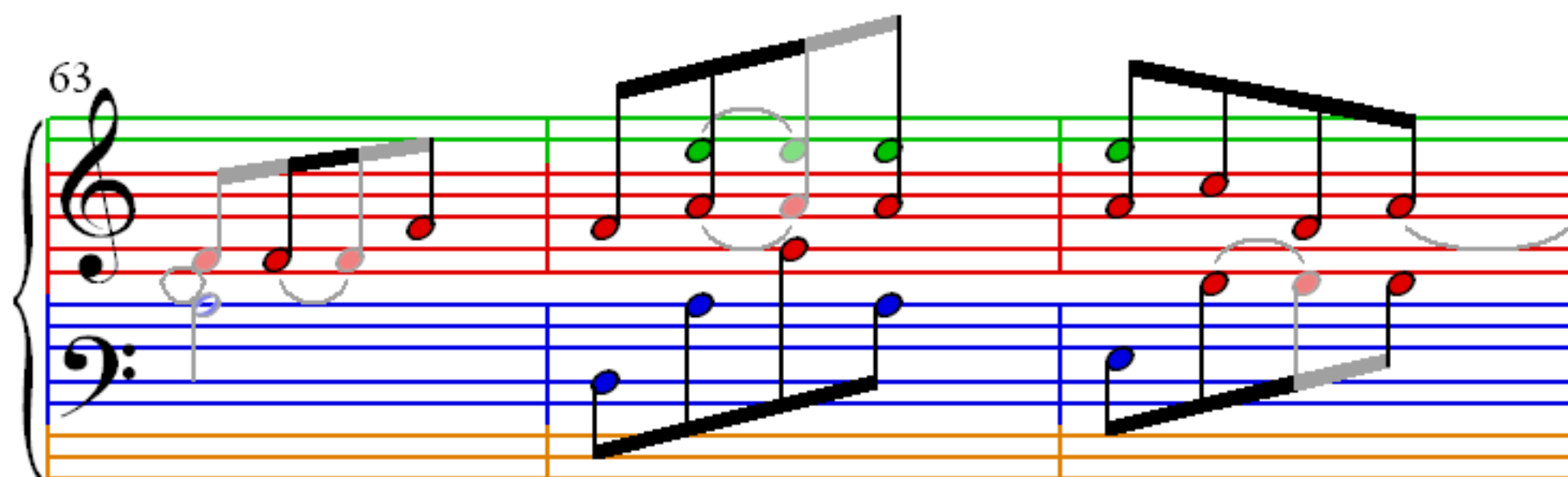


57



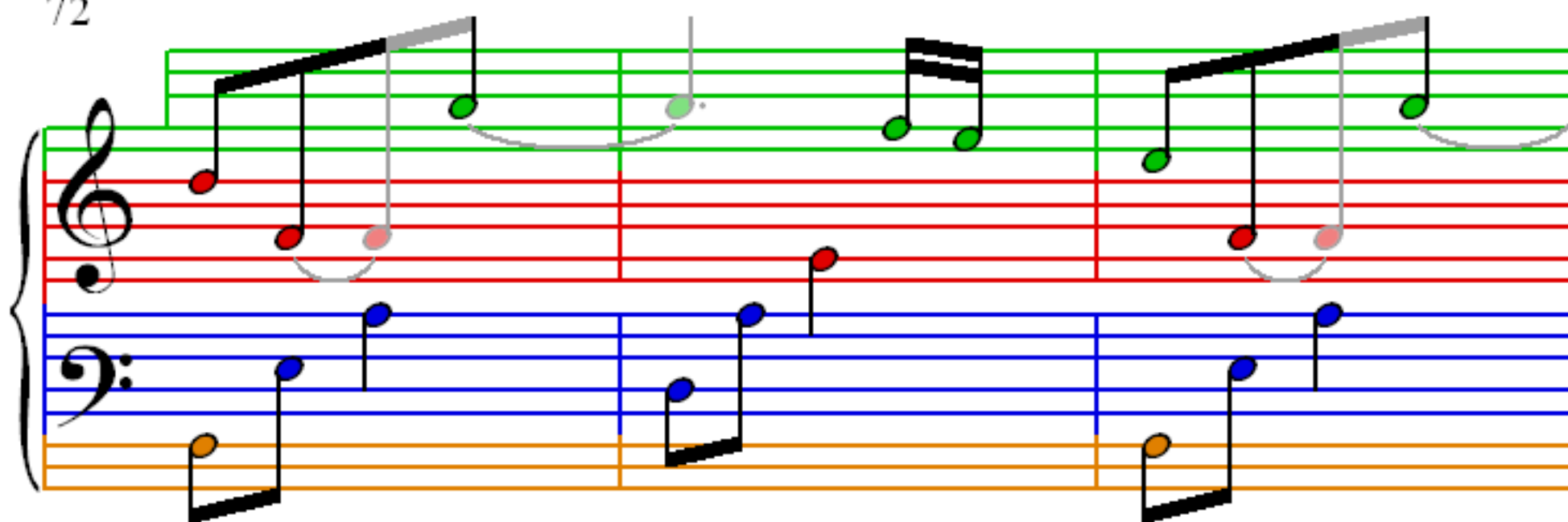
60



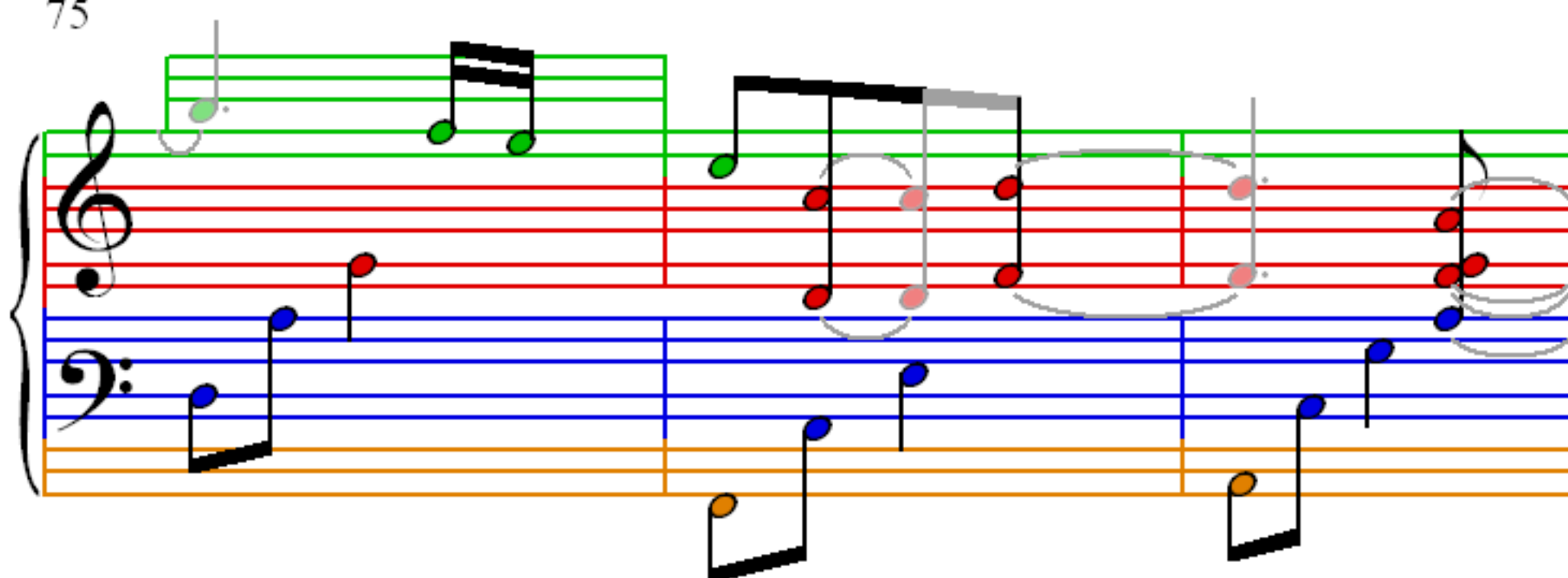




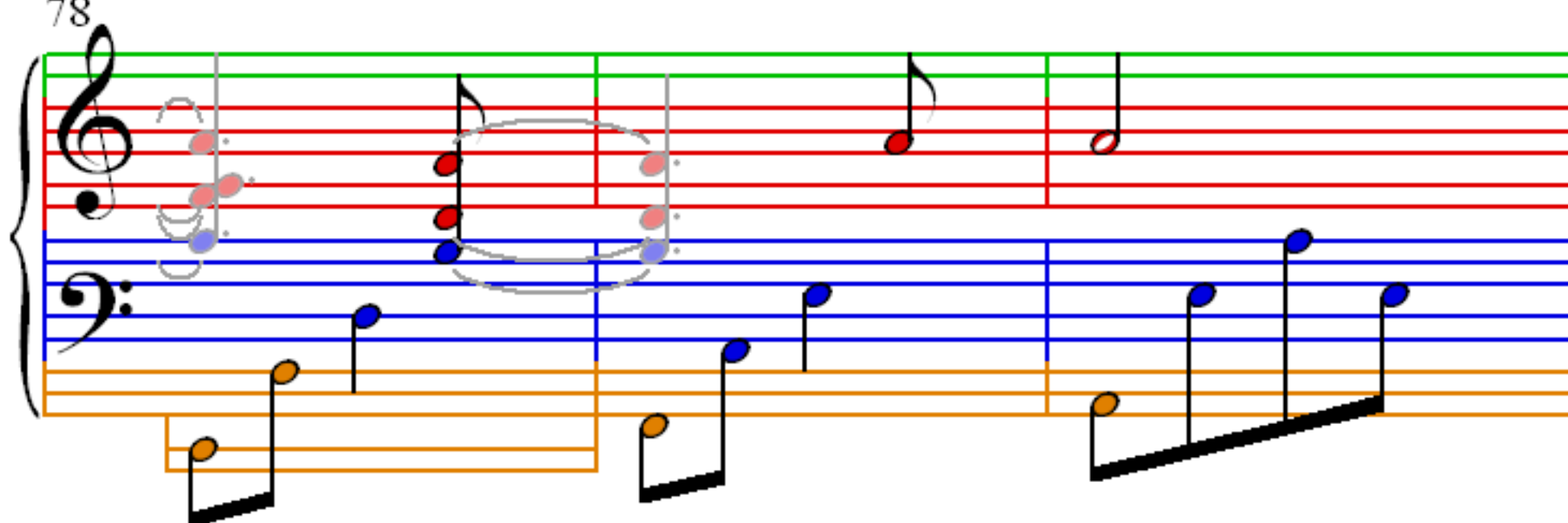
72



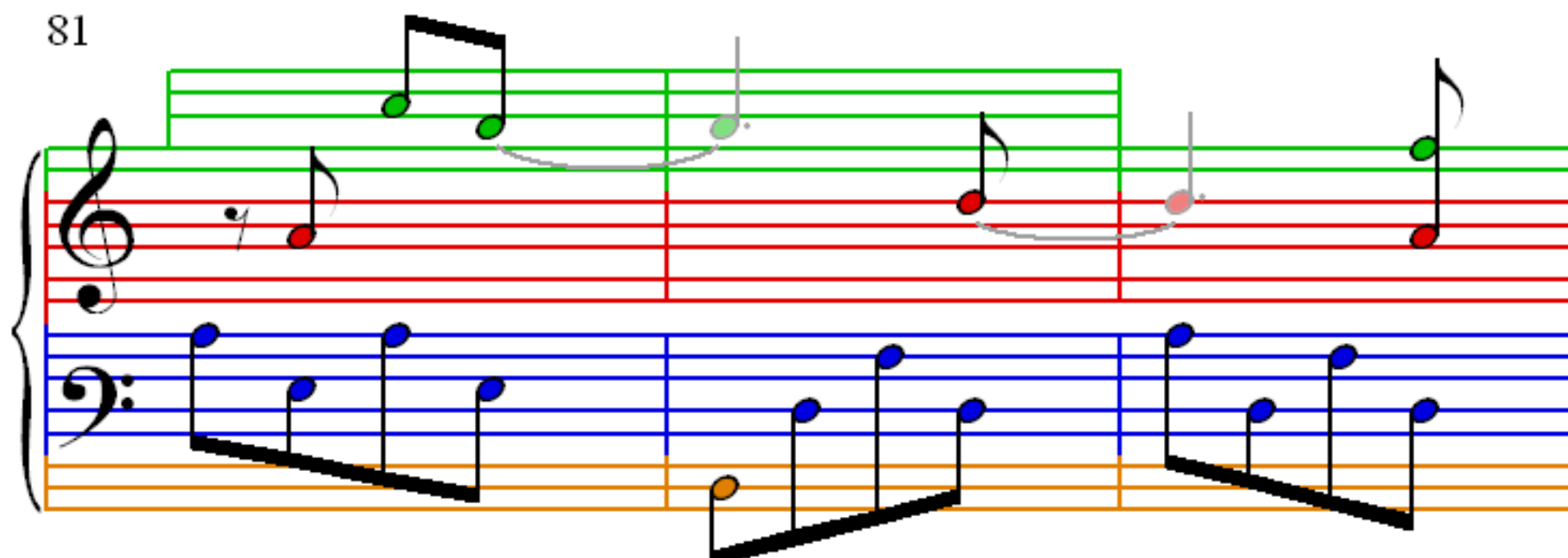
75



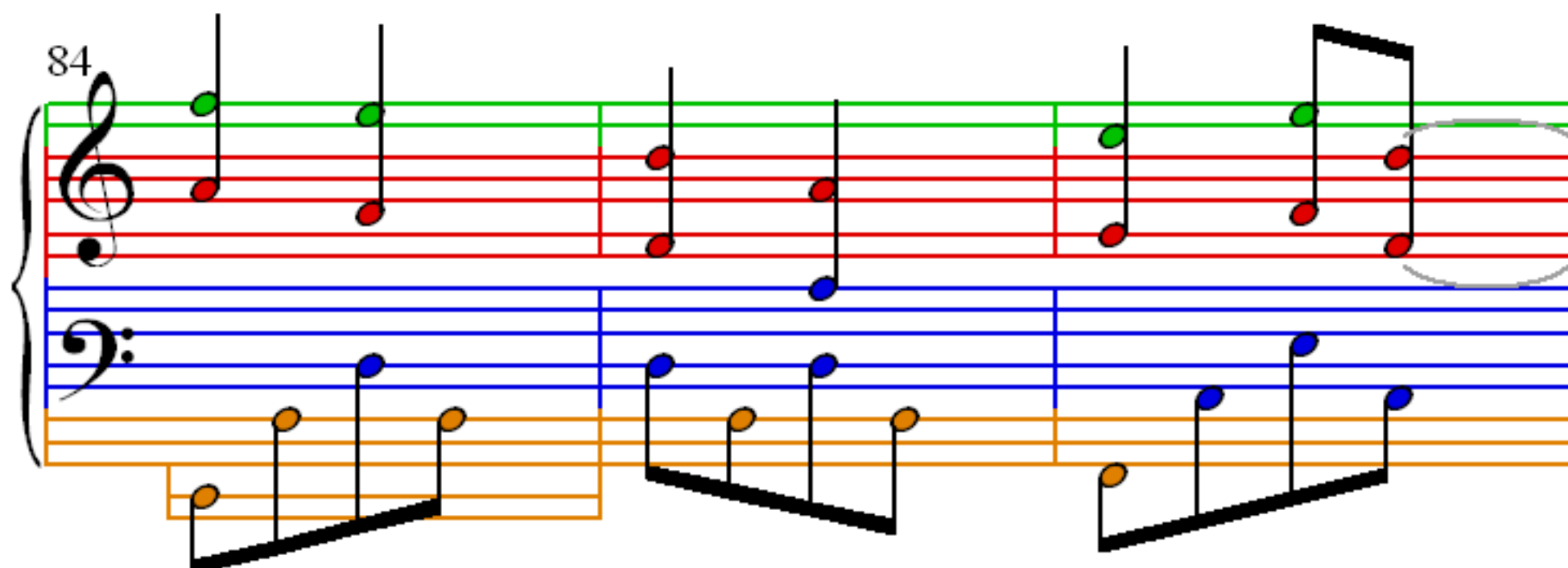
78



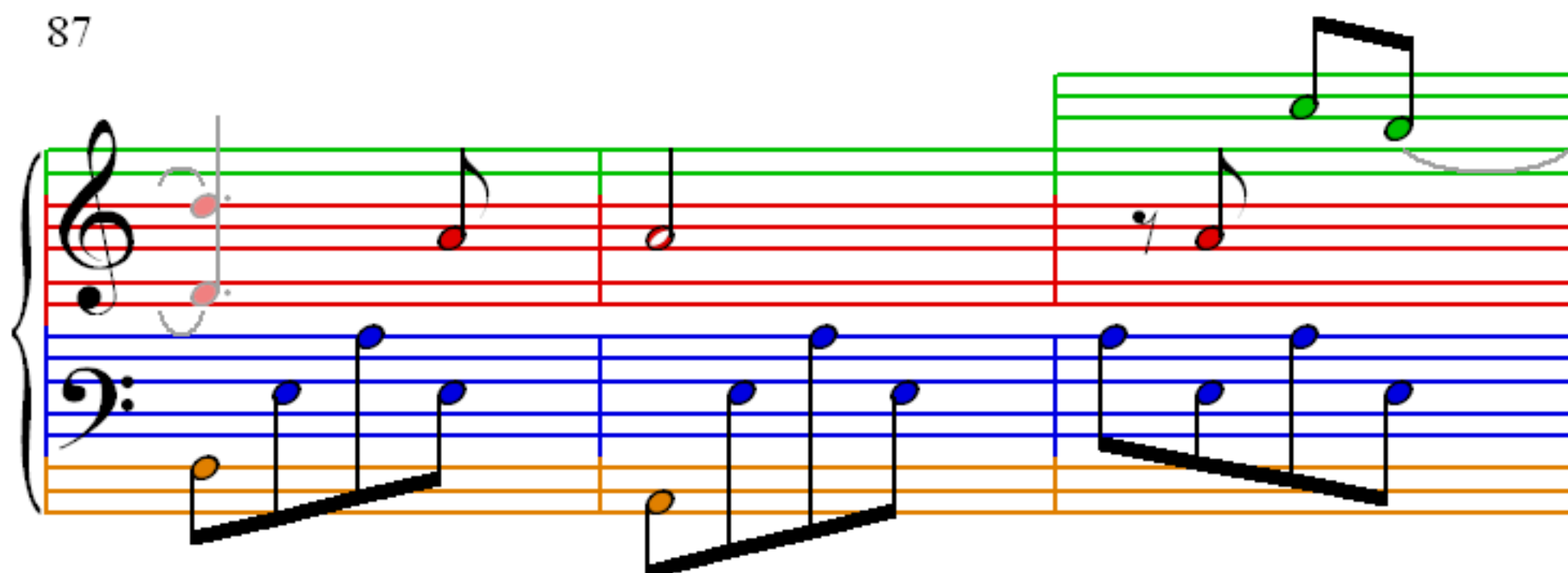
81



84



87



90

93

96

