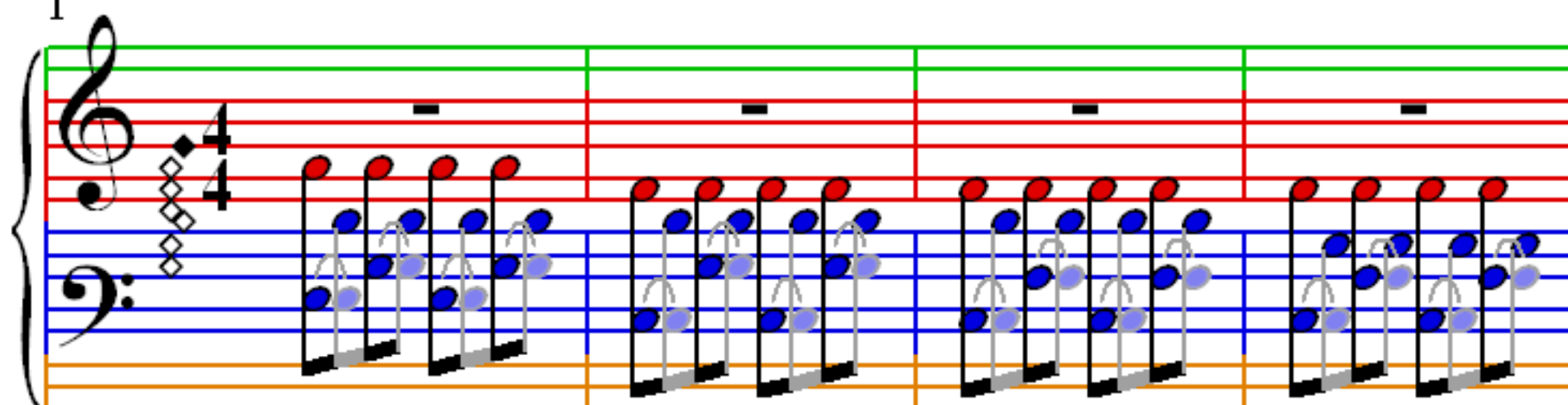


Comptine D'un Autre Ete

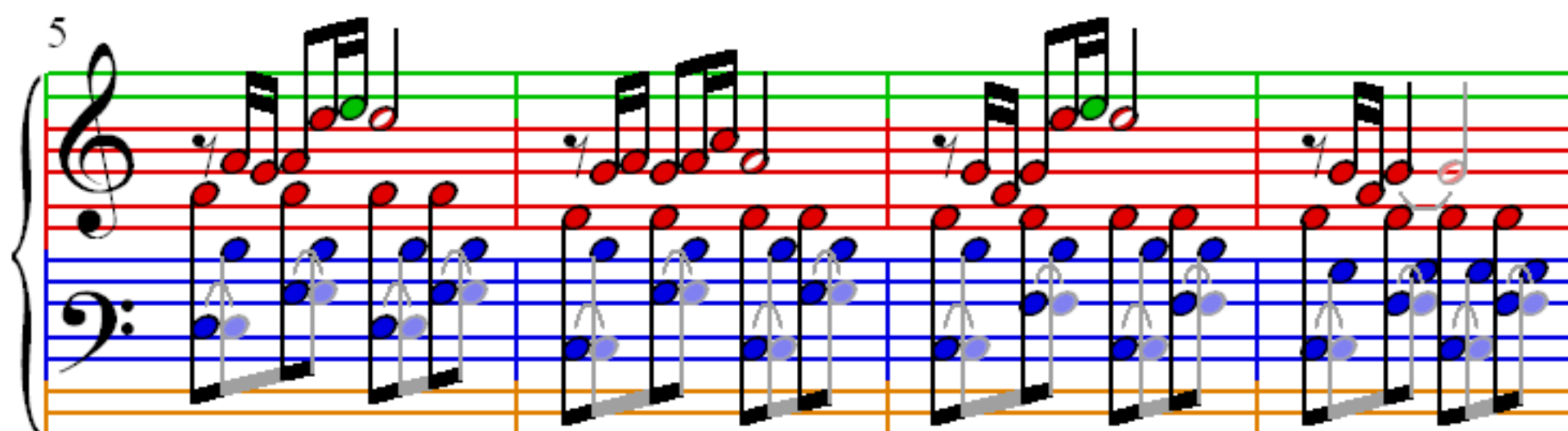
Unknown

$\bullet = 90$

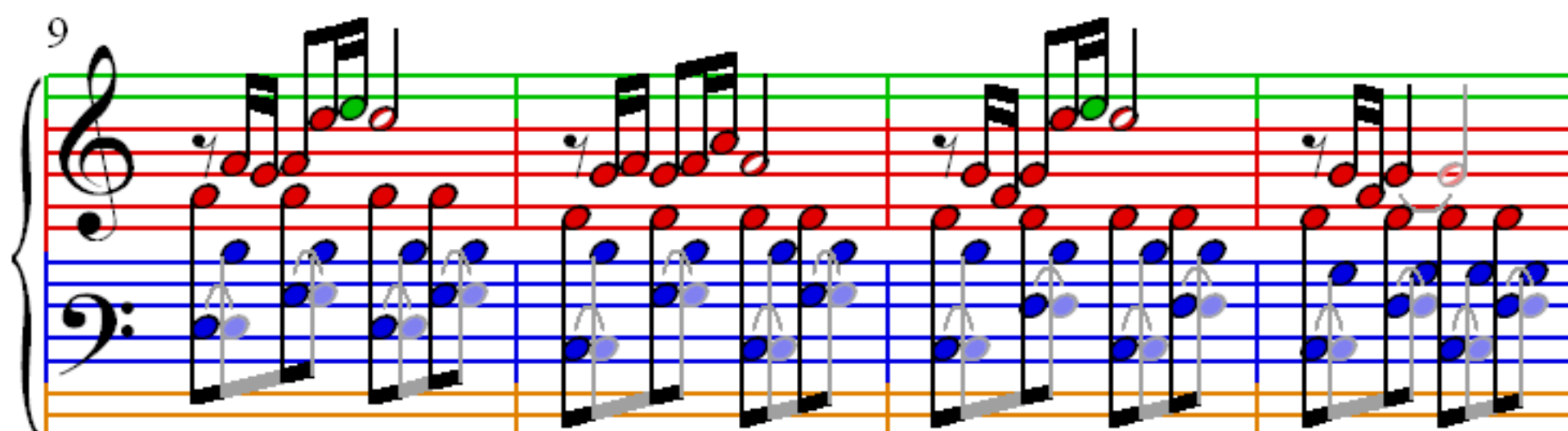
1



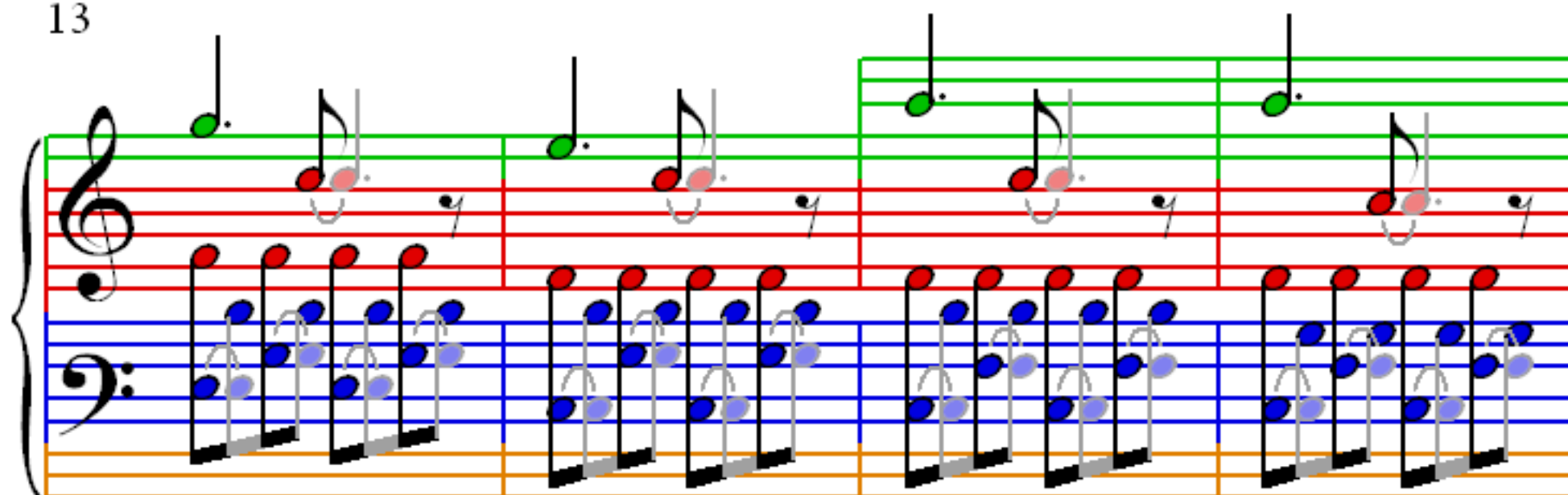
5



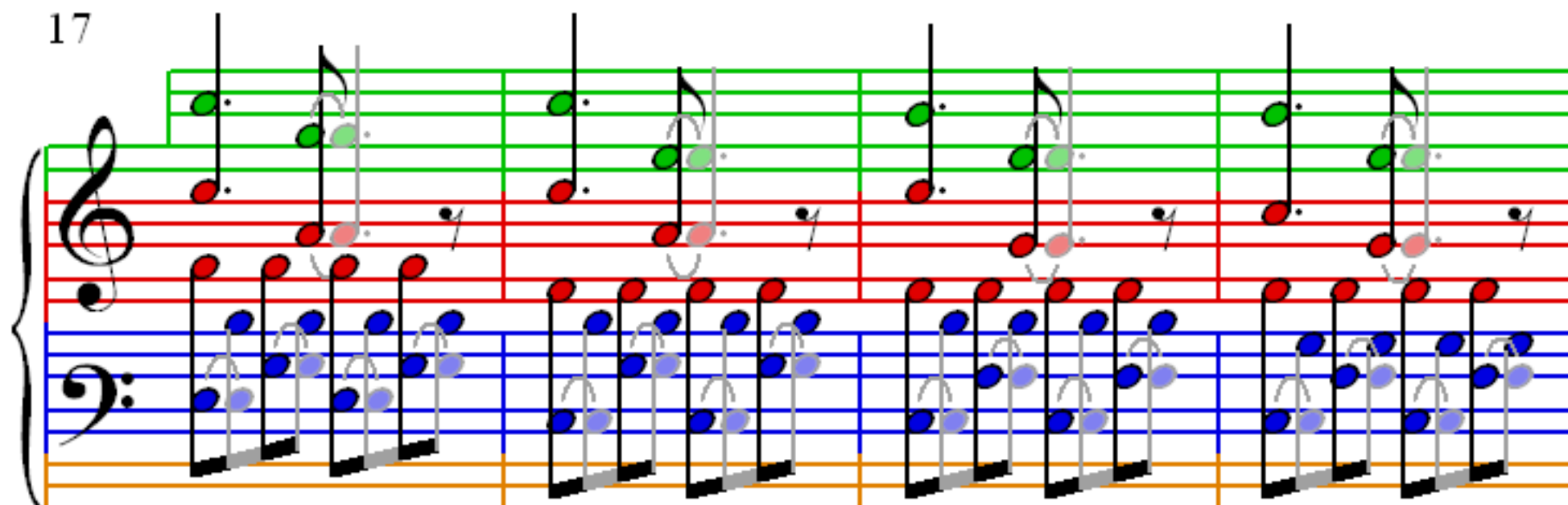
9



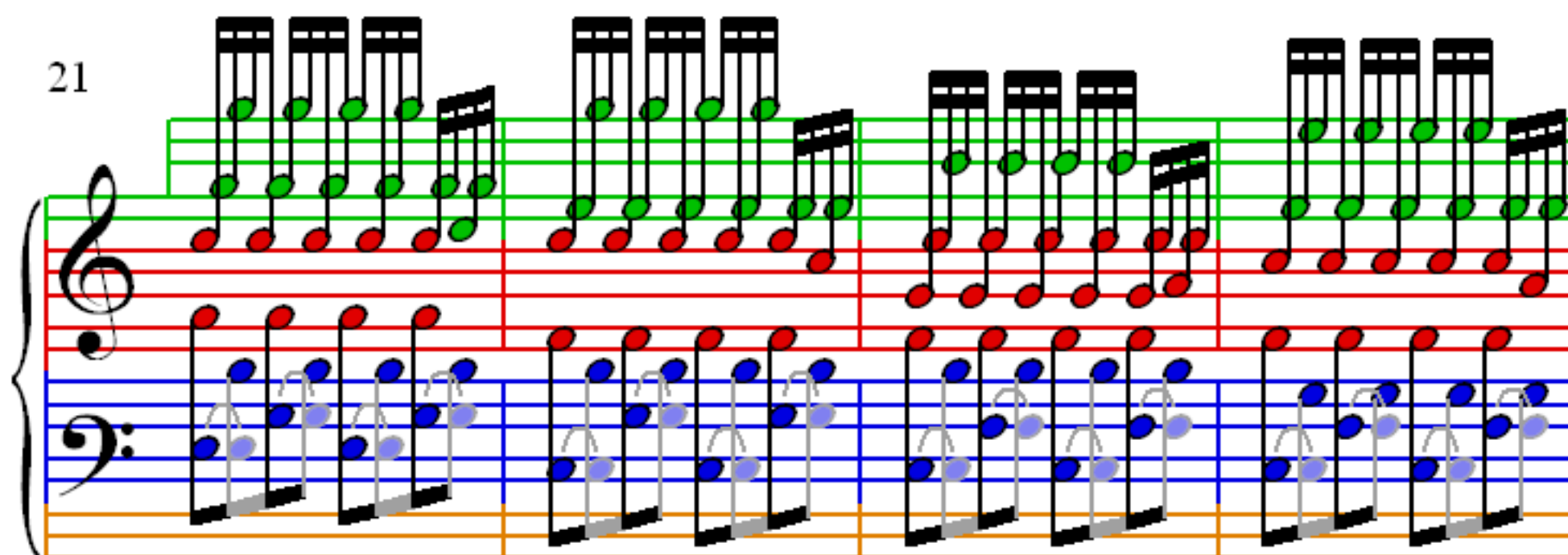
13



17



21



25

Measures 25-28: The right hand plays a continuous eighth-note melody. Measures 25 and 27 feature a sequence of green notes (F4, G4, A4, B4, C5), while measures 26 and 28 feature a sequence of red notes (G4, A4, B4, C5, D5). The left hand plays a continuous eighth-note accompaniment with blue and purple notes, primarily on the lower staff.

29

Measures 29-32: The right hand has a melodic line with green and purple notes. Measures 29 and 31 feature a sequence of green notes (F4, G4, A4, B4, C5), while measures 30 and 32 feature a sequence of purple notes (G4, A4, B4, C5, D5). The left hand continues the eighth-note accompaniment with blue and purple notes.

33

Measures 33-36: The right hand has a melodic line with green and purple notes. Measures 33 and 35 feature a sequence of green notes (F4, G4, A4, B4, C5), while measures 34 and 36 feature a sequence of purple notes (G4, A4, B4, C5, D5). The left hand continues the eighth-note accompaniment with blue and purple notes.

37

Measures 37-40 of the piece. The system consists of three staves: a single treble staff at the top and a grand staff (treble and bass) below. The treble staff has a purple line and a green line. The grand staff has a red line, a blue line, and an orange line. The melody in the treble staff is a simple two-note pattern (purple and green) repeated four times. The bass line in the grand staff is a complex, rhythmic pattern of eighth and sixteenth notes, repeated four times.

41

Measures 41-44 of the piece. The system consists of three staves: a single treble staff at the top and a grand staff (treble and bass) below. The treble staff has a purple line and a green line. The grand staff has a red line, a blue line, and an orange line. The melody in the treble staff is a simple two-note pattern (purple and green) repeated four times. The bass line in the grand staff is a complex, rhythmic pattern of eighth and sixteenth notes, repeated four times.

45

Measures 45-48 of the piece. The system consists of three staves: a single treble staff at the top and a grand staff (treble and bass) below. The treble staff has a purple line and a green line. The grand staff has a red line, a blue line, and an orange line. The melody in the treble staff is a complex, rhythmic pattern of eighth and sixteenth notes, repeated four times. The bass line in the grand staff is a complex, rhythmic pattern of eighth and sixteenth notes, repeated four times.

49

Measures 49-52. The vocal line consists of four staves: purple, green, red, and blue. The piano accompaniment consists of two staves: a treble clef staff (red) and a bass clef staff (blue). The piano part features a steady eighth-note accompaniment in the bass and a melody in the treble.

53

Measure 53. The vocal line consists of four staves: purple, green, red, and blue. The piano accompaniment consists of two staves: a treble clef staff (red) and a bass clef staff (blue). The piano part features a steady eighth-note accompaniment in the bass and a melody in the treble.