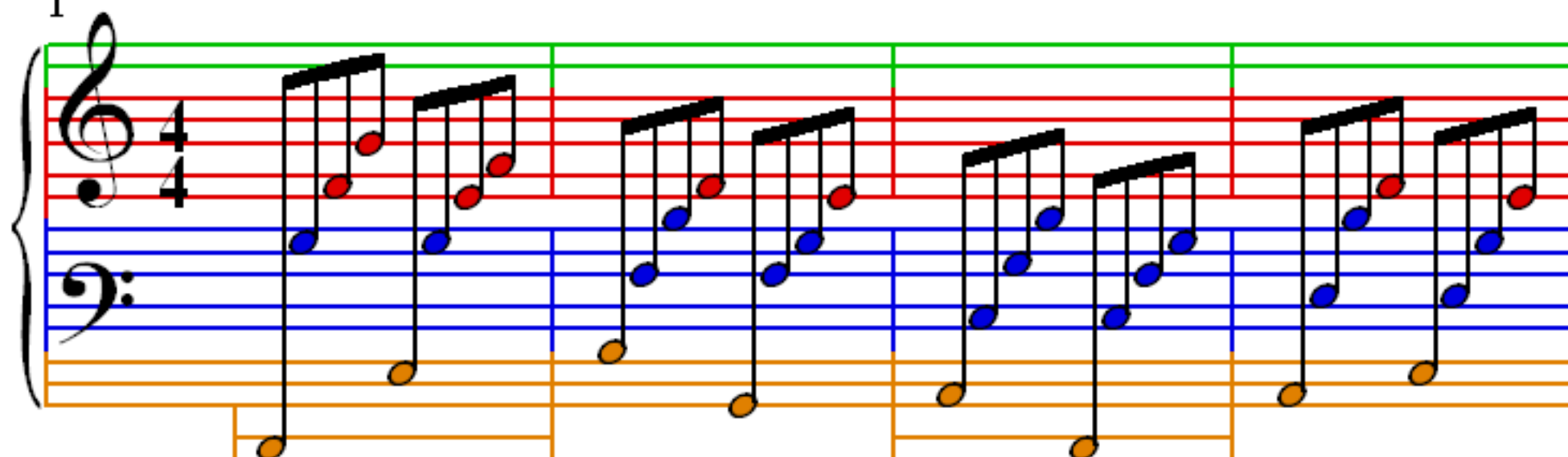


# Canon in D (similar to George Winston)<sup>Unknown</sup>

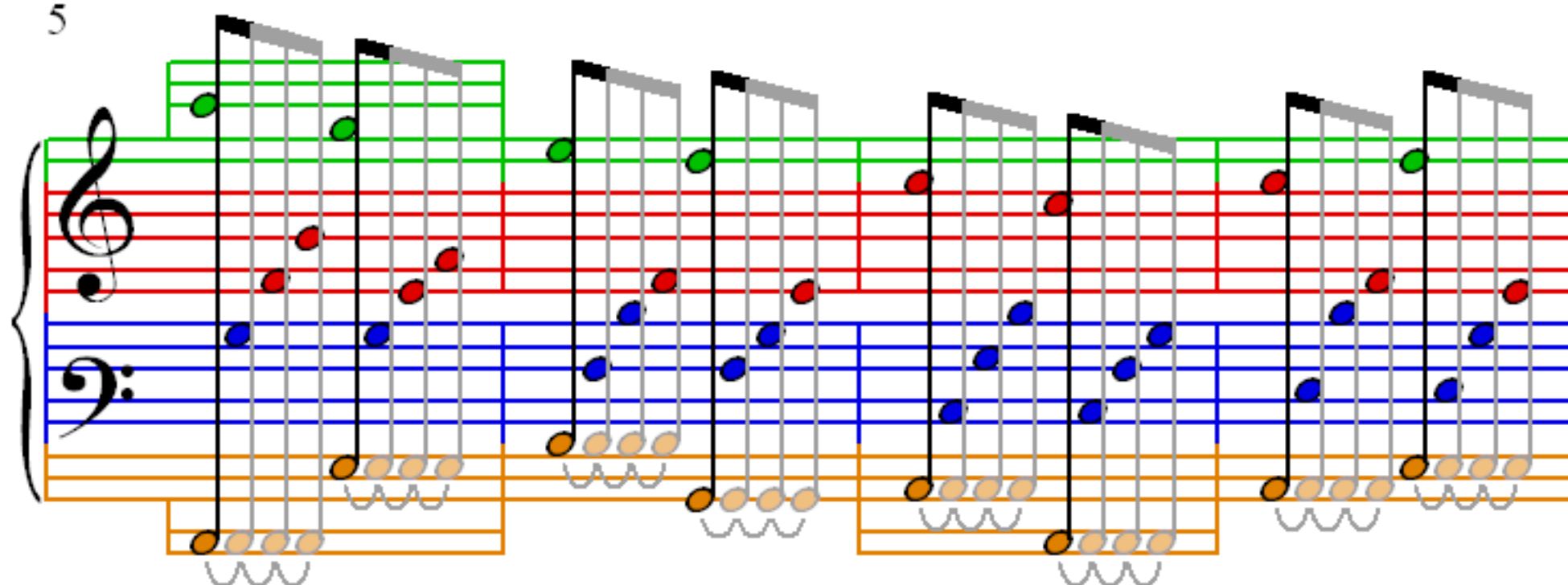
Pachelbel

$\bullet = 109$

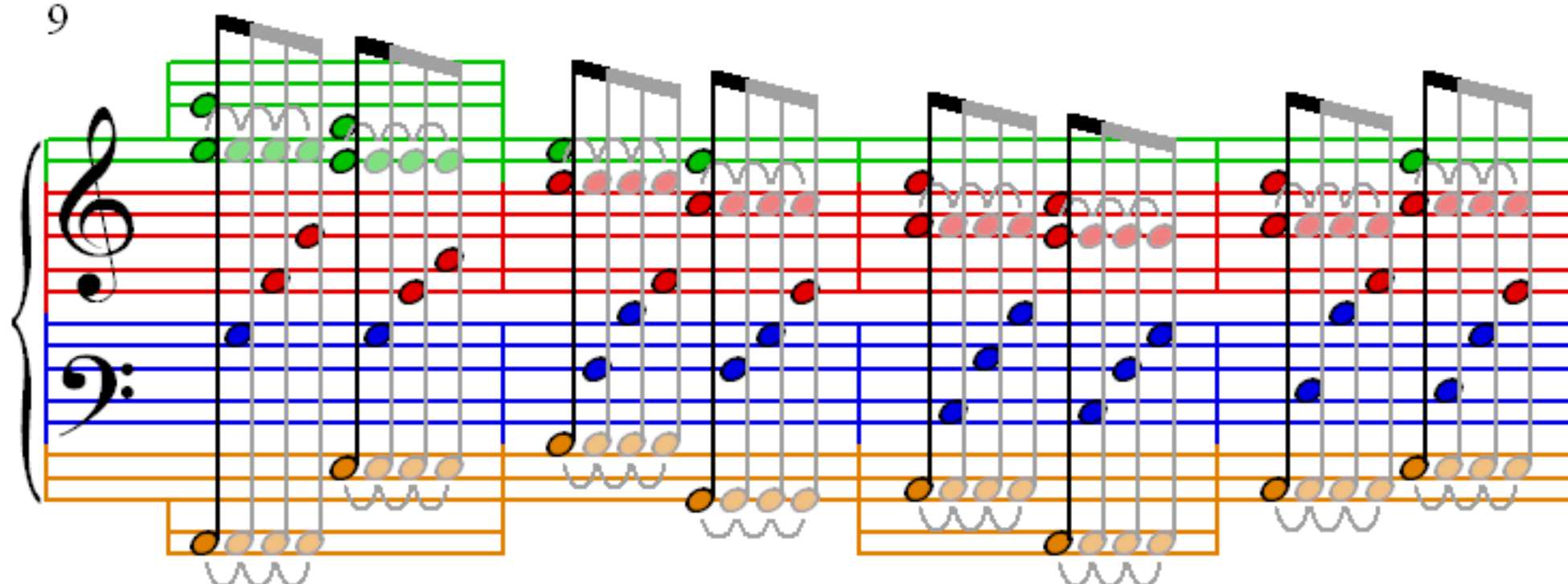
1



5



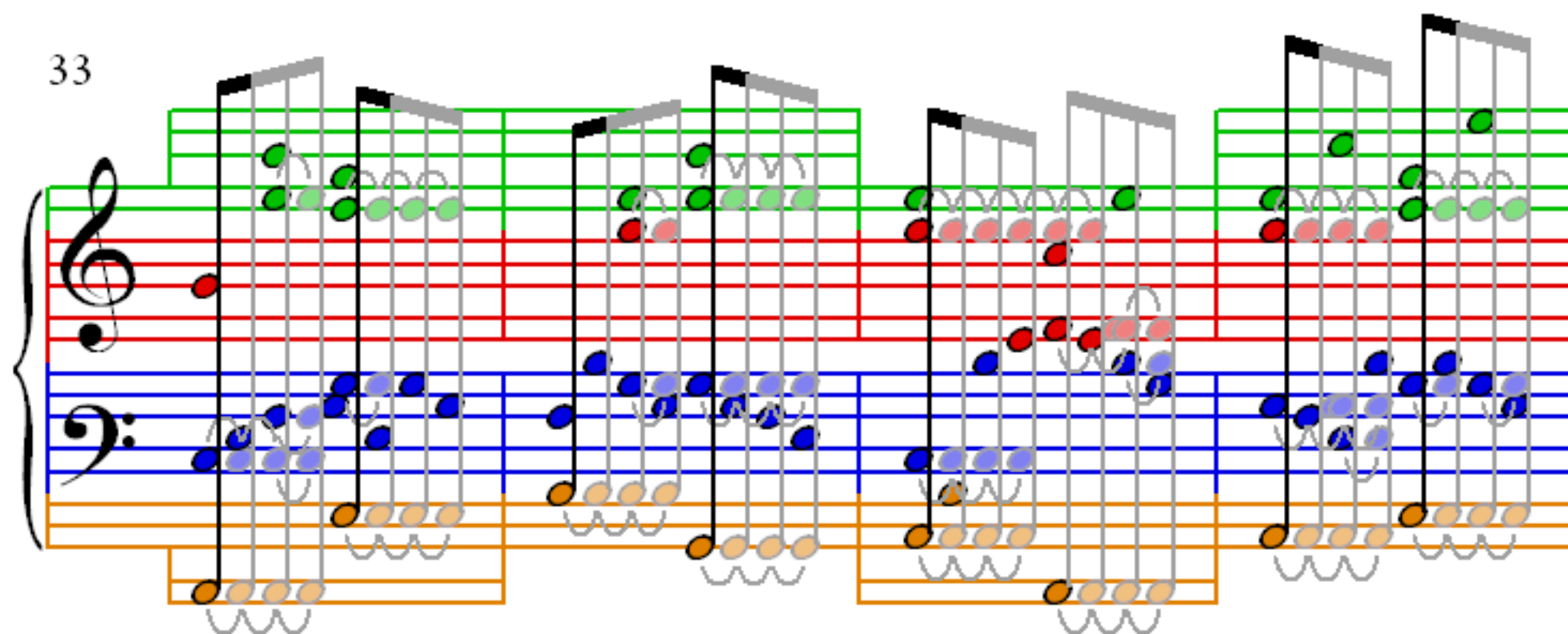
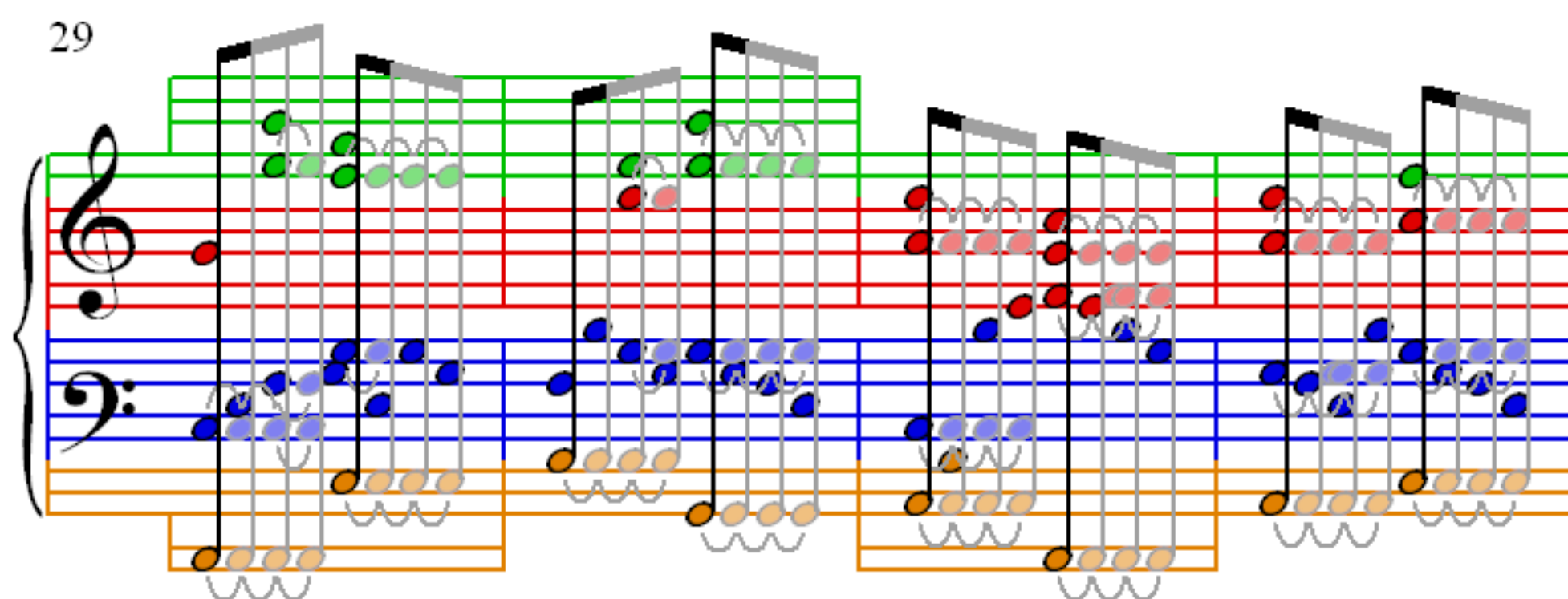
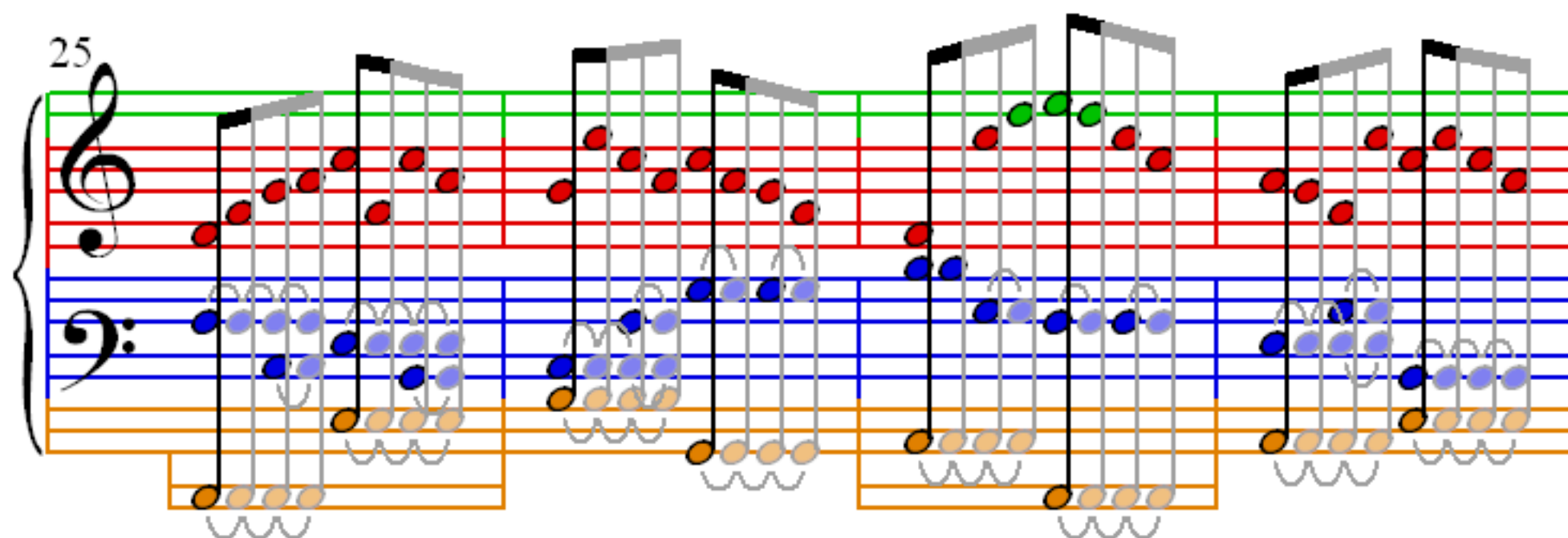
9



17

21

The musical score for measures 21-24 is shown. The piano part continues with a similar pattern of chords and arpeggios. The right hand plays a sequence of chords, with the top voice moving in a stepwise fashion. The left hand provides a steady accompaniment with arpeggiated figures. The score is written on a grand staff with treble and bass clefs. The notes are color-coded: green for the top voice, red for the middle voice, blue for the left hand, and orange for the right hand. The measures are numbered 21, 22, 23, and 24.



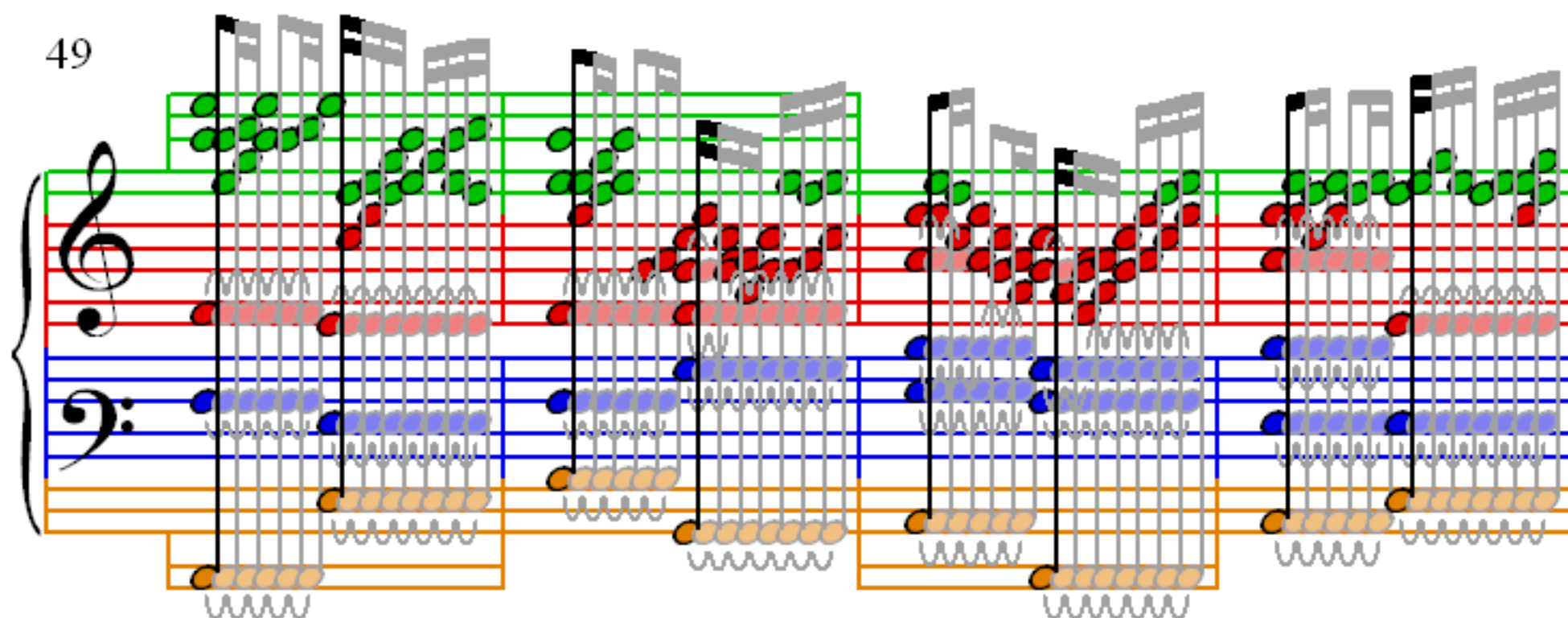
37

41

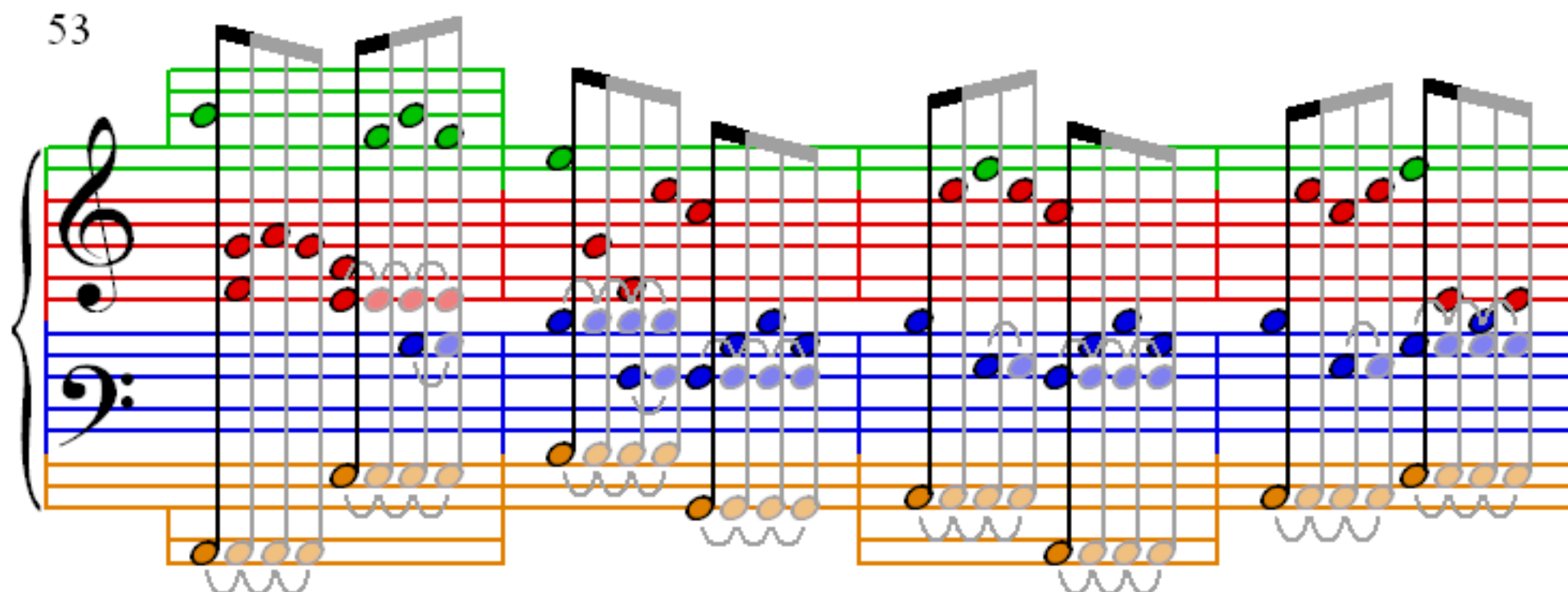
45



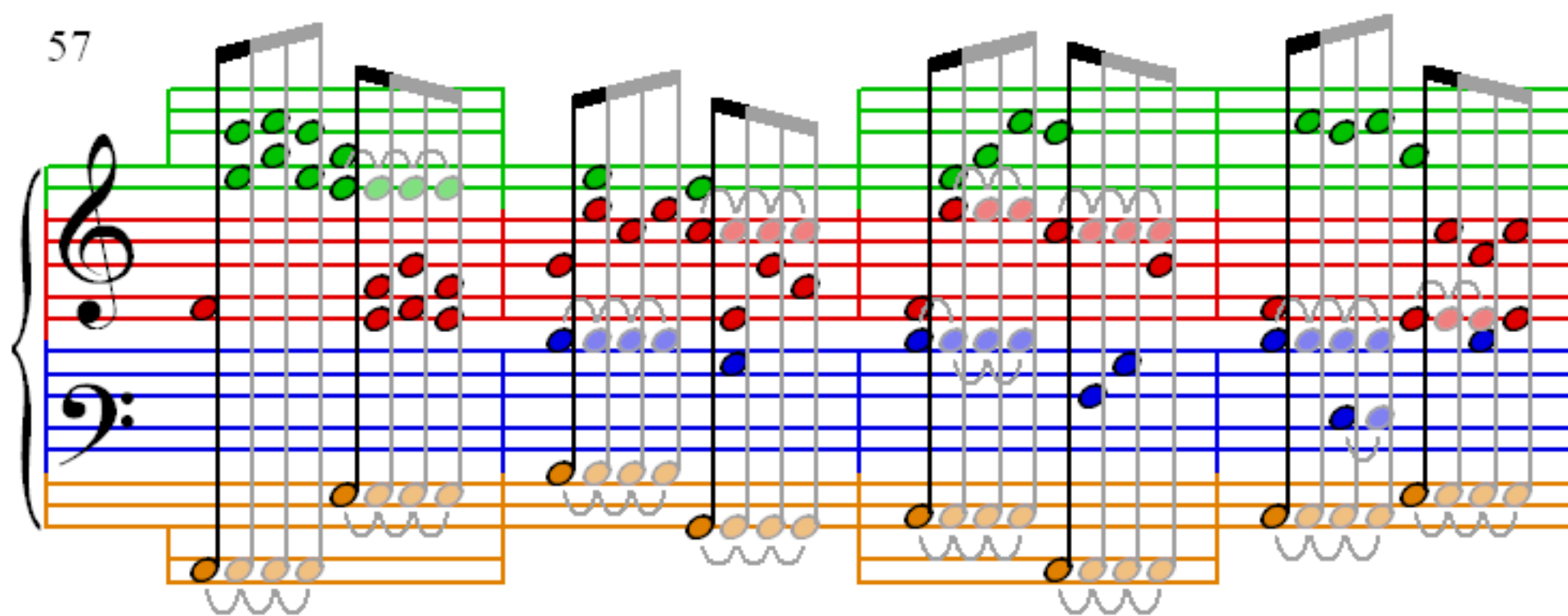
49



53



57



61

Measures 61-64 of the Canon in D. The notation is presented in a grand staff with three systems. Each system contains a treble clef staff (top), a bass clef staff (middle), and a separate bass line (bottom). The treble staff features a green line and red lines. The bass staff features a blue line and orange lines. The bass line features an orange line. The notation includes various musical symbols such as notes, rests, and accidentals, with some notes highlighted in green, red, blue, and orange. The measures are grouped by vertical bar lines.

65

Measures 65-68 of the Canon in D. The notation is presented in a grand staff with three systems. Each system contains a treble clef staff (top), a bass clef staff (middle), and a separate bass line (bottom). The treble staff features a green line and red lines. The bass staff features a blue line and orange lines. The bass line features an orange line. The notation includes various musical symbols such as notes, rests, and accidentals, with some notes highlighted in green, red, blue, and orange. The measures are grouped by vertical bar lines.

69

Measures 69-72 of the Canon in D. The notation is presented in a grand staff with three systems. Each system contains a treble clef staff (top), a bass clef staff (middle), and a separate bass line (bottom). The treble staff features a green line and red lines. The bass staff features a blue line and orange lines. The bass line features an orange line. The notation includes various musical symbols such as notes, rests, and accidentals, with some notes highlighted in green, red, blue, and orange. The measures are grouped by vertical bar lines.

73

Measures 73-76 of the Canon in D. The notation is presented in a grand staff with treble and bass clefs. The notes are color-coded: green for the right hand, red for the left hand, blue for the bass line, and orange for the pedal point. The notes are grouped by vertical lines, and the measures are separated by bar lines. The notation includes various musical symbols such as stems, beams, and slurs.

77

Measures 77-80 of the Canon in D. The notation is presented in a grand staff with treble and bass clefs. The notes are color-coded: green for the right hand, red for the left hand, blue for the bass line, and orange for the pedal point. The notes are grouped by vertical lines, and the measures are separated by bar lines. The notation includes various musical symbols such as stems, beams, and slurs.

81

Measures 81-84 of the Canon in D. The notation is presented in a grand staff with treble and bass clefs. The notes are color-coded: green for the right hand, red for the left hand, blue for the bass line, and orange for the pedal point. The notes are grouped by vertical lines, and the measures are separated by bar lines. The notation includes various musical symbols such as stems, beams, and slurs.

85

89