

Divenire

Einaudi

$\bullet = 90$

1

5

9

Detailed description: The image shows the first 12 measures of a musical score for 'Divenire' by Einaudi. The score is written for piano in 6/8 time, with a tempo marking of 90 beats per minute. It consists of three systems, each with four measures. The first system (measures 1-4) shows a treble clef with a key signature of one flat (B-flat) and a bass clef with a key signature of one flat (B-flat). The melody in the treble clef is simple, with notes on the first, second, and fourth lines. The bass clef features a complex, rhythmic accompaniment with many beamed notes. The second system (measures 5-8) continues the melody and accompaniment. The third system (measures 9-12) concludes the excerpt. The notation is color-coded: notes are black, stems are black, and beams are black. The background is white.

13

17

21

25

Measures 25-28: Treble clef has a single green half note in the first measure of each system, followed by a whole rest. The bass clef has a continuous eighth-note arpeggiated pattern. The staves are color-coded: green for the treble, blue for the middle, and orange for the bass.

29

Measures 29-32: Treble clef has a single green half note in the first measure of each system, followed by a whole rest. The bass clef has a continuous eighth-note arpeggiated pattern. The staves are color-coded: green for the treble, blue for the middle, and orange for the bass.

33

Measures 33-36: Treble clef has a melodic line with eighth and quarter notes, some green and some red. The bass clef has a continuous eighth-note arpeggiated pattern. The staves are color-coded: green for the treble, blue for the middle, and orange for the bass.

37

Measures 37-40. Treble clef: 37 (quarter, eighth, eighth, quarter, quarter, quarter, quarter, quarter), 38 (quarter, eighth, eighth, quarter, quarter, quarter, quarter, quarter), 39 (quarter, eighth, eighth, quarter, quarter, quarter, quarter, quarter), 40 (quarter, eighth, eighth, quarter, quarter, quarter, quarter, quarter). Bass clef: 37 (quarter, eighth, eighth, quarter, quarter, quarter, quarter, quarter), 38 (quarter, eighth, eighth, quarter, quarter, quarter, quarter, quarter), 39 (quarter, eighth, eighth, quarter, quarter, quarter, quarter, quarter), 40 (quarter, eighth, eighth, quarter, quarter, quarter, quarter, quarter).

41

Measures 41-44. Treble clef: 41 (quarter, eighth, eighth, quarter, quarter, quarter, quarter, quarter), 42 (quarter, eighth, eighth, quarter, quarter, quarter, quarter, quarter), 43 (quarter, eighth, eighth, quarter, quarter, quarter, quarter, quarter), 44 (quarter, eighth, eighth, quarter, quarter, quarter, quarter, quarter). Bass clef: 41 (quarter, eighth, eighth, quarter, quarter, quarter, quarter, quarter), 42 (quarter, eighth, eighth, quarter, quarter, quarter, quarter, quarter), 43 (quarter, eighth, eighth, quarter, quarter, quarter, quarter, quarter), 44 (quarter, eighth, eighth, quarter, quarter, quarter, quarter, quarter).

45

Measures 45-48. Treble clef: 45 (quarter, eighth, eighth, quarter, quarter, quarter, quarter, quarter), 46 (quarter, eighth, eighth, quarter, quarter, quarter, quarter, quarter), 47 (quarter, eighth, eighth, quarter, quarter, quarter, quarter, quarter), 48 (quarter, eighth, eighth, quarter, quarter, quarter, quarter, quarter). Bass clef: 45 (quarter, eighth, eighth, quarter, quarter, quarter, quarter, quarter), 46 (quarter, eighth, eighth, quarter, quarter, quarter, quarter, quarter), 47 (quarter, eighth, eighth, quarter, quarter, quarter, quarter, quarter), 48 (quarter, eighth, eighth, quarter, quarter, quarter, quarter, quarter).


49

53

57

A musical score for the song 'The Rose Tree'. The score is written for a piano, with a treble clef on the upper staff and a bass clef on the lower staff. The key signature is one flat (B-flat), and the time signature is 4/4. The melody is written in the treble staff, featuring a series of eighth and sixteenth notes, with some notes highlighted in green. The bass line is written in the bass staff, featuring a series of eighth and sixteenth notes, with some notes highlighted in blue. The score is divided into four measures, each containing a group of notes. The first measure starts with a treble clef and a bass clef, and the second measure starts with a treble clef. The third and fourth measures start with a treble clef. The score is labeled with the number '61' in the top left corner.

65



69

The musical score for Example 69 is presented in a grand staff format, consisting of a treble staff and a bass staff. The treble staff features a green staff line and red notes, while the bass staff features a blue staff line and orange notes. The music is in 4/4 time and consists of four measures. The treble staff contains a series of eighth notes, and the bass staff contains a series of eighth notes. The notes are grouped into pairs, with the first note of each pair being a half note and the second note being a quarter note. The notes are connected by a slur, indicating a continuous melodic line. The notes are colored green, red, blue, and orange, which likely correspond to different pitch classes or intervals. The notes are arranged in a way that suggests a specific harmonic or melodic progression, which is the focus of the analysis in the accompanying text.

73

Measures 73-76: Treble clef features a continuous eighth-note melody. The notes are colored red and green. Bass clef features a simple accompaniment with blue and orange notes.

77

Measures 77-80: Treble clef features a continuous eighth-note melody. The notes are colored green and purple. Bass clef features a simple accompaniment with blue and orange notes.

81

Measures 81-84: Treble clef features a continuous eighth-note melody. The notes are colored green and purple. Bass clef features a simple accompaniment with blue and orange notes.

85

89

93

97

101

105

109

113

117

121

125

129

Measures 129-132. Treble clef: Measure 129 has a green line with four dotted quarter notes. Measure 130 has a green line with a dotted quarter note, a quarter note, and a beamed eighth note. Measure 131 has a green line with a dotted quarter note, a quarter note, and a beamed eighth note. Measure 132 has a red note in the treble. Bass clef: Measure 129 has a blue line with a dotted quarter note and an eighth note, and an orange line with a dotted quarter note and an eighth note. Measure 130 has a blue line with a dotted quarter note and an eighth note, and an orange line with a dotted quarter note and an eighth note. Measure 131 has a blue line with a dotted quarter note and an eighth note, and an orange line with a dotted quarter note and an eighth note. Measure 132 has a red note in the treble.

133

Measures 133-136. Treble clef: Measure 133 has a green line with a dotted quarter note and an eighth note. Measure 134 has a green line with a dotted quarter note and an eighth note. Measure 135 has a green line with a dotted quarter note and an eighth note. Measure 136 has a red note in the treble. Bass clef: Measure 133 has a blue line with a dotted quarter note and an eighth note, and an orange line with a dotted quarter note and an eighth note. Measure 134 has a blue line with a dotted quarter note and an eighth note, and an orange line with a dotted quarter note and an eighth note. Measure 135 has a blue line with a dotted quarter note and an eighth note, and an orange line with a dotted quarter note and an eighth note. Measure 136 has a red note in the treble.

137

Measures 137-140. Treble clef: Measure 137 has a green line with a dotted quarter note and an eighth note. Measure 138 has a green line with a dotted quarter note and an eighth note. Measure 139 has a green line with a dotted quarter note and an eighth note. Measure 140 has a red note in the treble. Bass clef: Measure 137 has a blue line with a dotted quarter note and an eighth note, and an orange line with a dotted quarter note and an eighth note. Measure 138 has a blue line with a dotted quarter note and an eighth note, and an orange line with a dotted quarter note and an eighth note. Measure 139 has a blue line with a dotted quarter note and an eighth note, and an orange line with a dotted quarter note and an eighth note. Measure 140 has a red note in the treble.

141

145

149

153

Measures 153-156. Treble clef: Red notes on lines 1-4, green notes on lines 5-6. Bass clef: Blue notes on lines 1-4, orange notes on lines 5-6. Vertical bar lines are present.

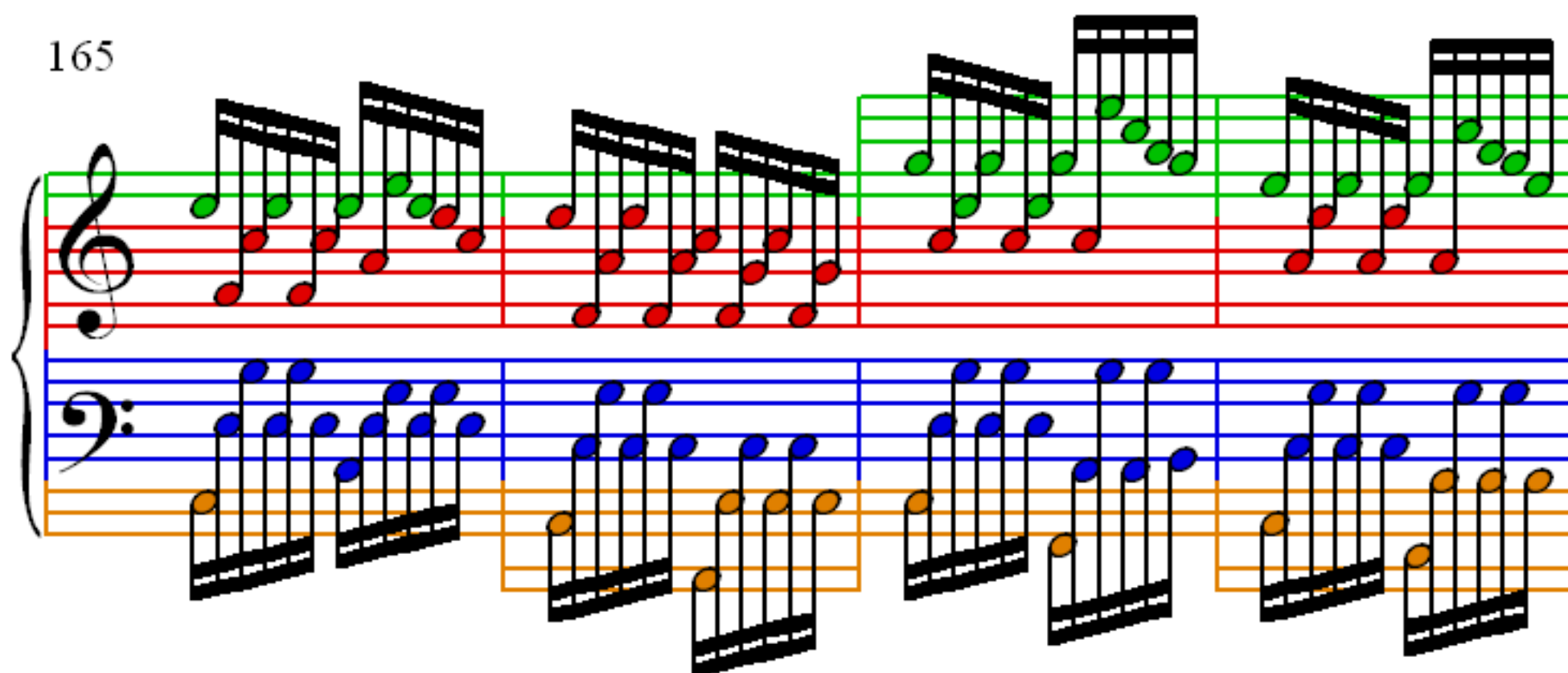
157

Measures 157-160. Treble clef: Red notes on lines 1-4, green notes on lines 5-6. Bass clef: Blue notes on lines 1-4, orange notes on lines 5-6. Vertical bar lines are present.

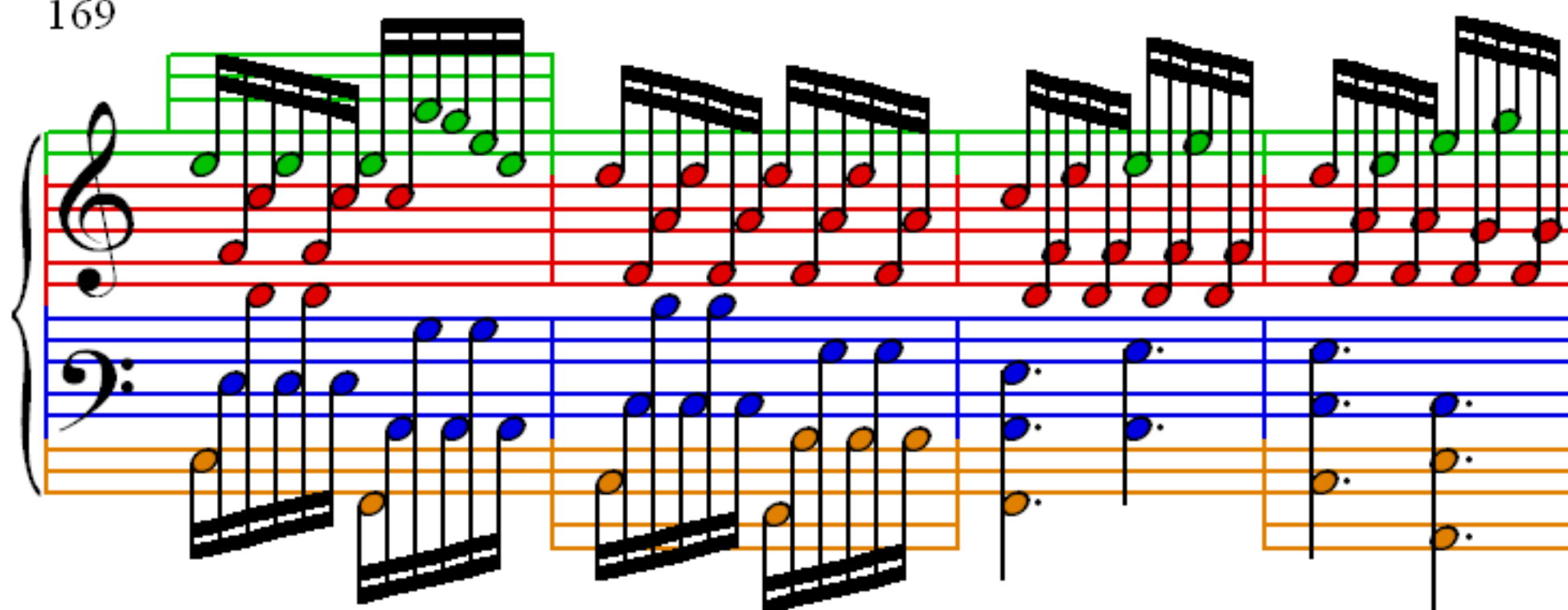
161

Measures 161-164. Treble clef: Red notes on lines 1-4, green notes on lines 5-6. Bass clef: Blue notes on lines 1-4, orange notes on lines 5-6. Vertical bar lines are present.

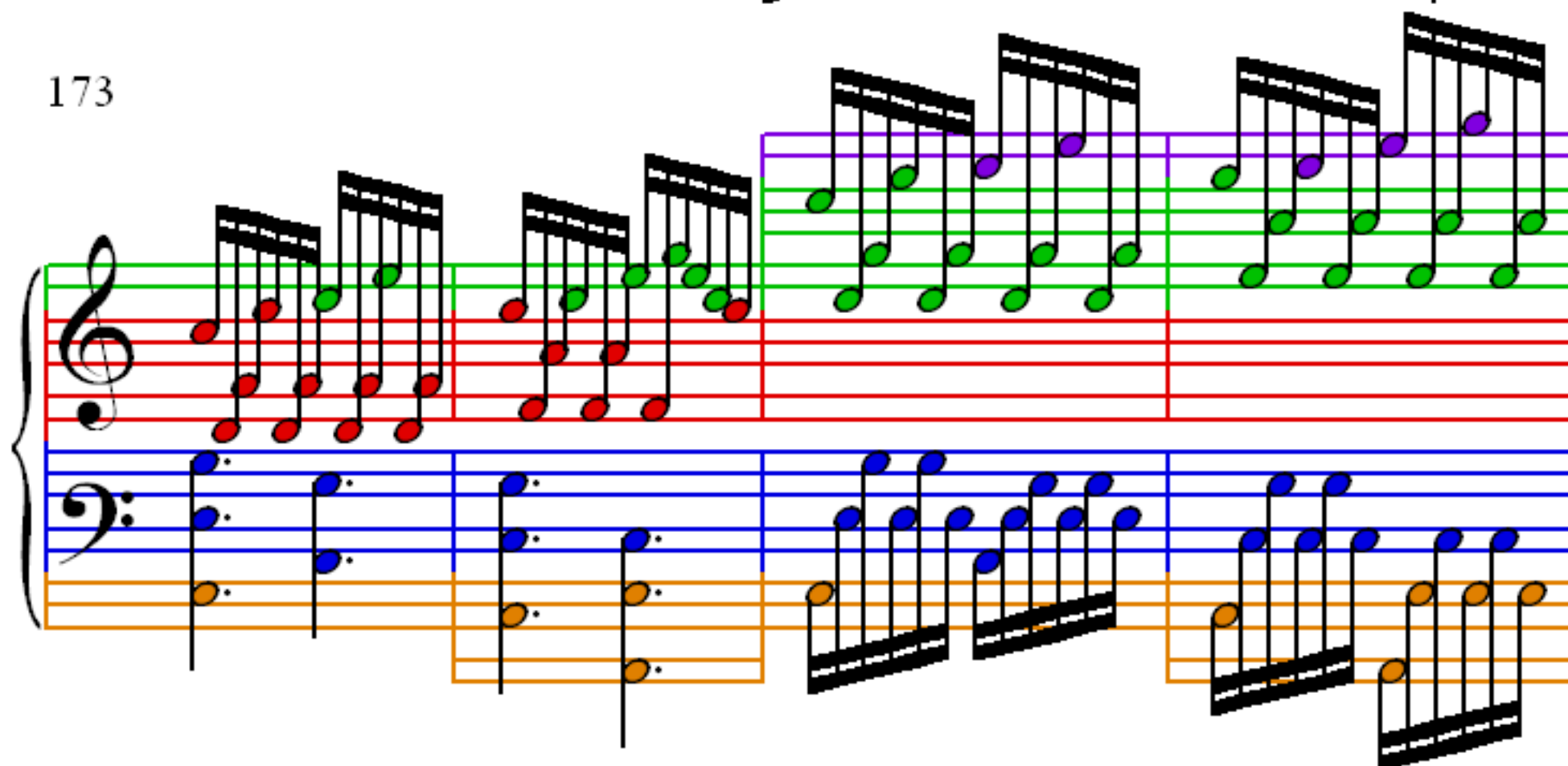
165



169



173



177

Measures 177-180. Treble clef: Four measures of eighth-note chords, each with a green note on the bottom line and a purple note on the top line. Bass clef: Four measures of eighth-note chords, each with a blue note on the top line and an orange note on the bottom line. The staves are color-coded: green for the treble staff and blue/orange for the bass staff.

181

Measures 181-184. Treble clef: Measures 181-183 show eighth-note chords with green and purple notes. Measure 184 shows a whole-note chord with a green note on the top line and a red note on the bottom line. Bass clef: Measures 181-183 show eighth-note chords with blue and orange notes. Measure 184 shows a whole-note chord with a blue note on the top line and an orange note on the bottom line. The staves are color-coded: green for the treble staff and blue/orange for the bass staff.

185

Measures 185-188. Treble clef: Measures 185-188 show eighth-note chords with green and red notes. Bass clef: Measures 185-188 show eighth-note chords with blue and orange notes. The staves are color-coded: green for the treble staff and blue/orange for the bass staff.

189

Measures 189-192 of a musical score. The system consists of two staves: a treble staff (top) and a bass staff (bottom). The treble staff has a red line and a green line. The bass staff has a blue line and an orange line. The notes are colored: red for the treble staff and blue for the bass staff. The notes are grouped in measures, with some measures containing multiple notes. The notes are connected by stems, and some measures have a double bar line.

193

Measures 193-196 of a musical score. The system consists of two staves: a treble staff (top) and a bass staff (bottom). The treble staff has a red line and a green line. The bass staff has a blue line and an orange line. The notes are colored: red for the treble staff and blue for the bass staff. The notes are grouped in measures, with some measures containing multiple notes. The notes are connected by stems, and some measures have a double bar line.

197

Measures 197-200 of a musical score. The system consists of two staves: a treble staff (top) and a bass staff (bottom). The treble staff has a red line and a green line. The bass staff has a blue line and an orange line. The notes are colored: red for the treble staff and blue for the bass staff. The notes are grouped in measures, with some measures containing multiple notes. The notes are connected by stems, and some measures have a double bar line.