

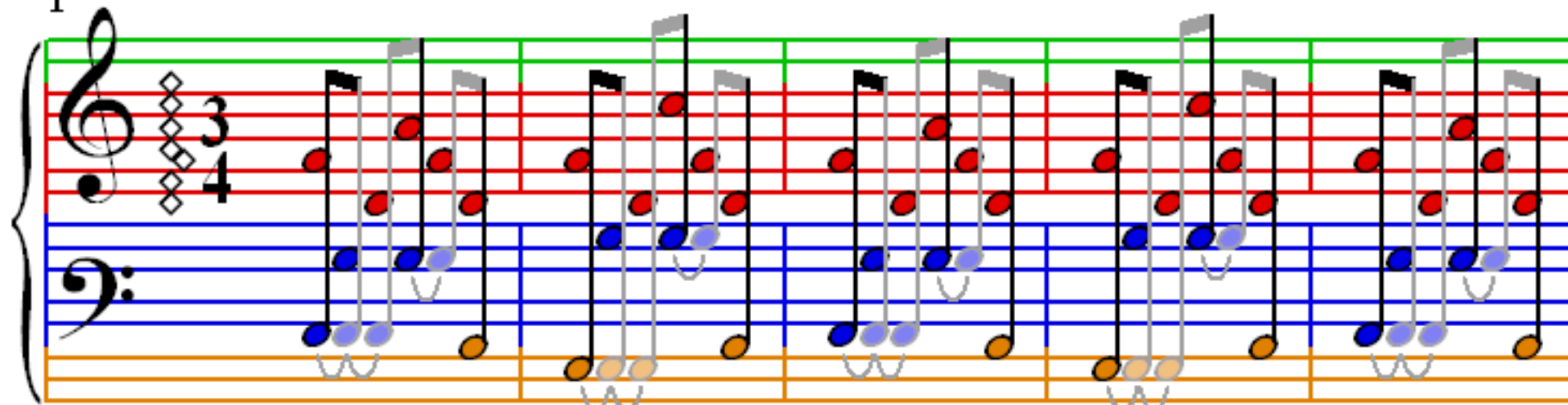
Hallelujay (accomp)

Unknown

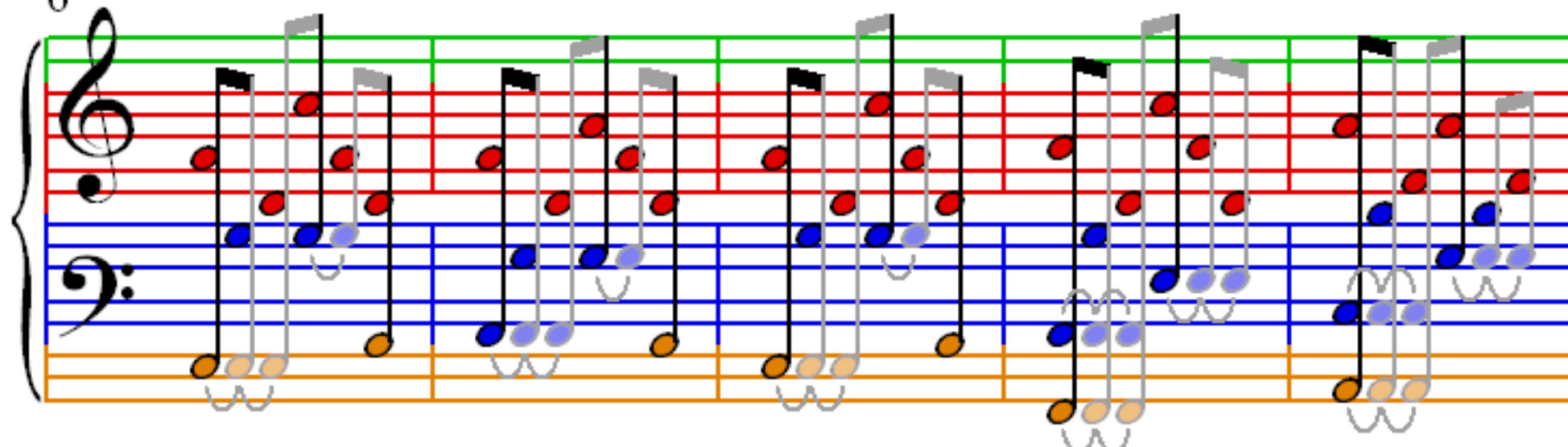
Leonard Cohen

$\bullet = 110$

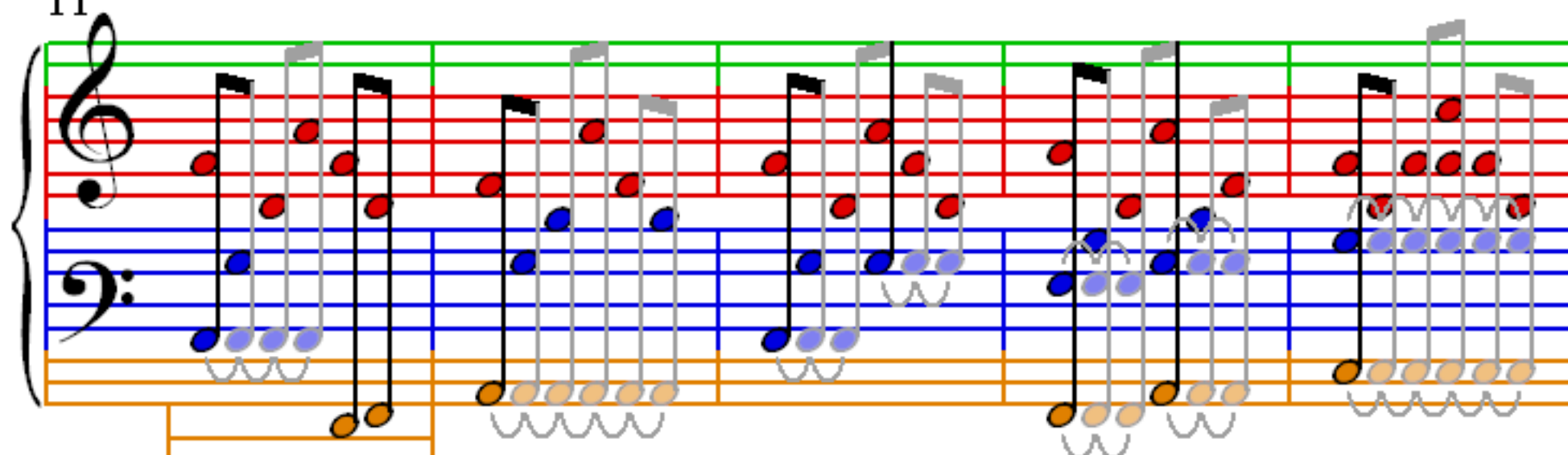
1



6



11



16

21

26

31

36

Measures 36-40. Treble clef: continuous eighth-note melody. Bass clef: complex accompaniment with triplets and sixteenth-note patterns. A third staff at the bottom shows a continuous eighth-note line.

41

Measures 41-45. Treble clef: continuous eighth-note melody. Bass clef: complex accompaniment with triplets and sixteenth-note patterns. A third staff at the bottom shows a continuous eighth-note line.

46

Measures 46-50. Treble clef: continuous eighth-note melody. Bass clef: complex accompaniment with triplets and sixteenth-note patterns. A third staff at the bottom shows a continuous eighth-note line.

51

56

61

66

71

76

81

86

91

96

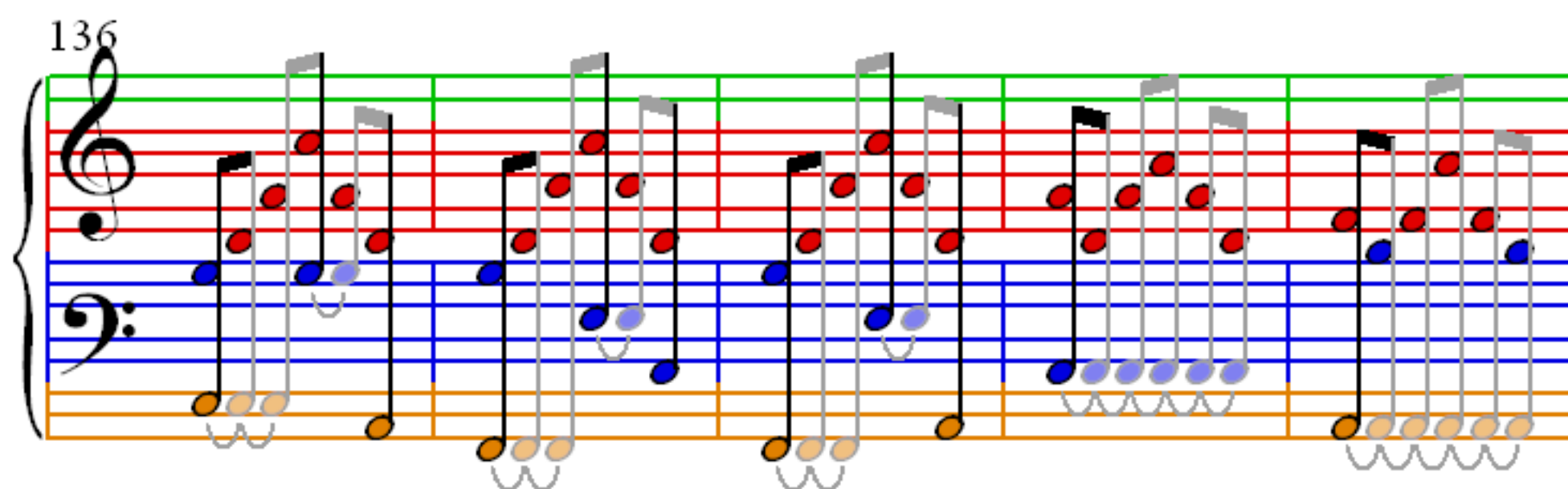
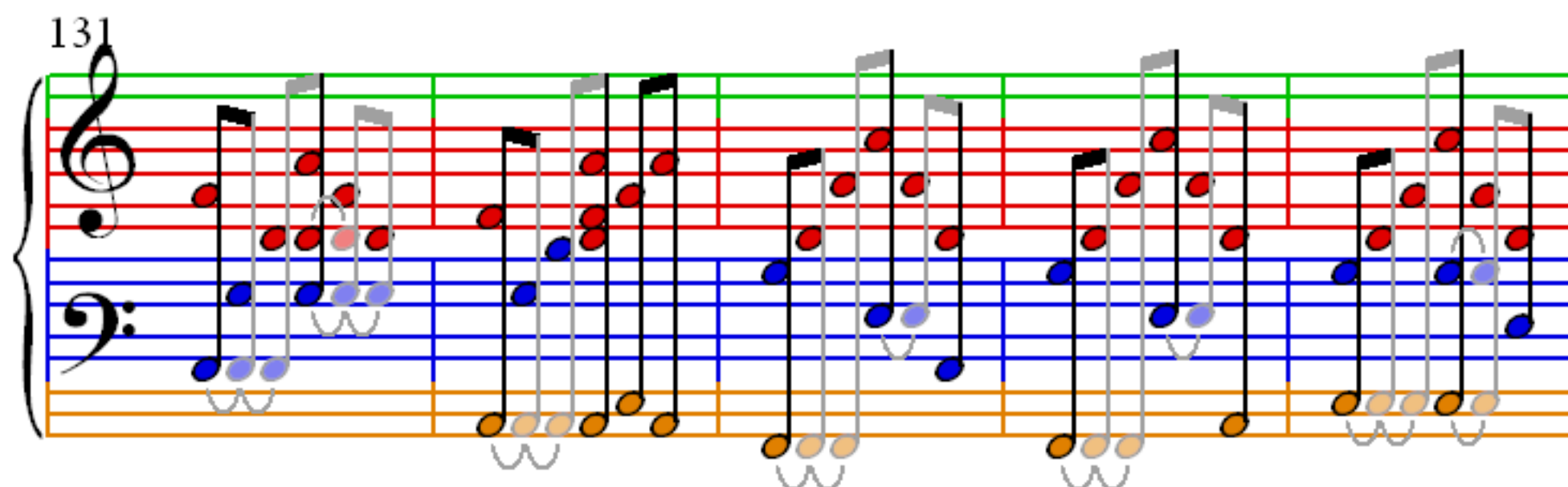
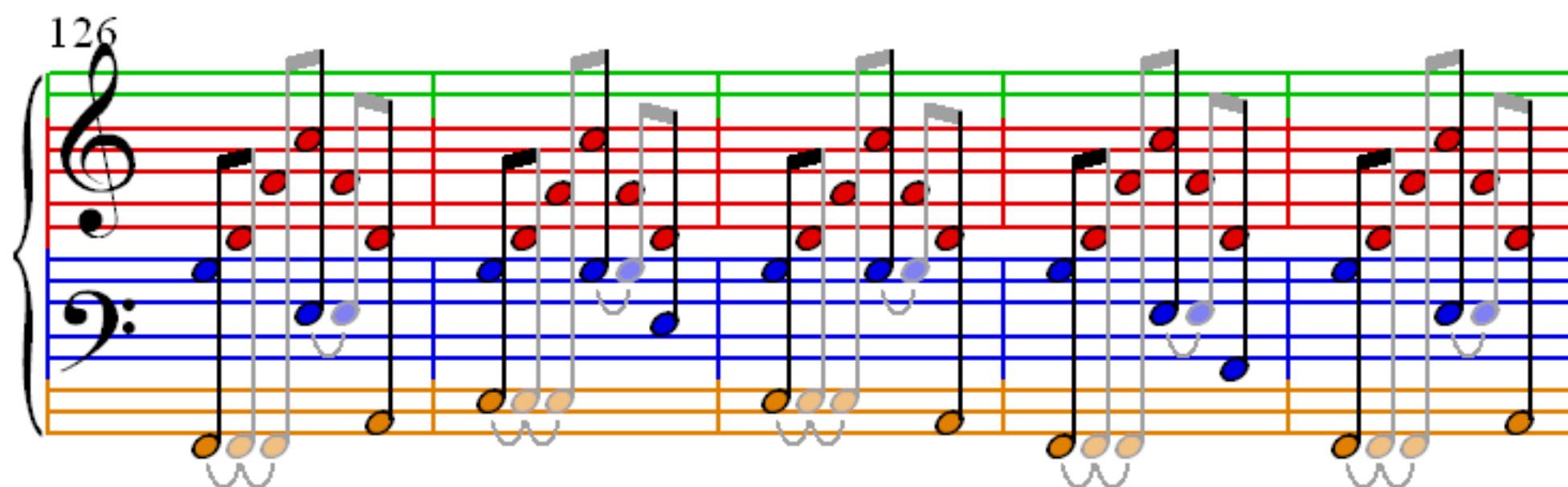
101

106

111

116

121



[illegible]