

Voyage A Venice

Senneville

1

Measures 1-2 of the piece. The treble clef staff has a 4/4 time signature. The melody in the treble clef consists of eighth notes, with the first four measures of the first system and the last four measures of the second system. The bass clef staff has a whole rest in both measures. The staff is color-coded with green, red, blue, and orange lines.

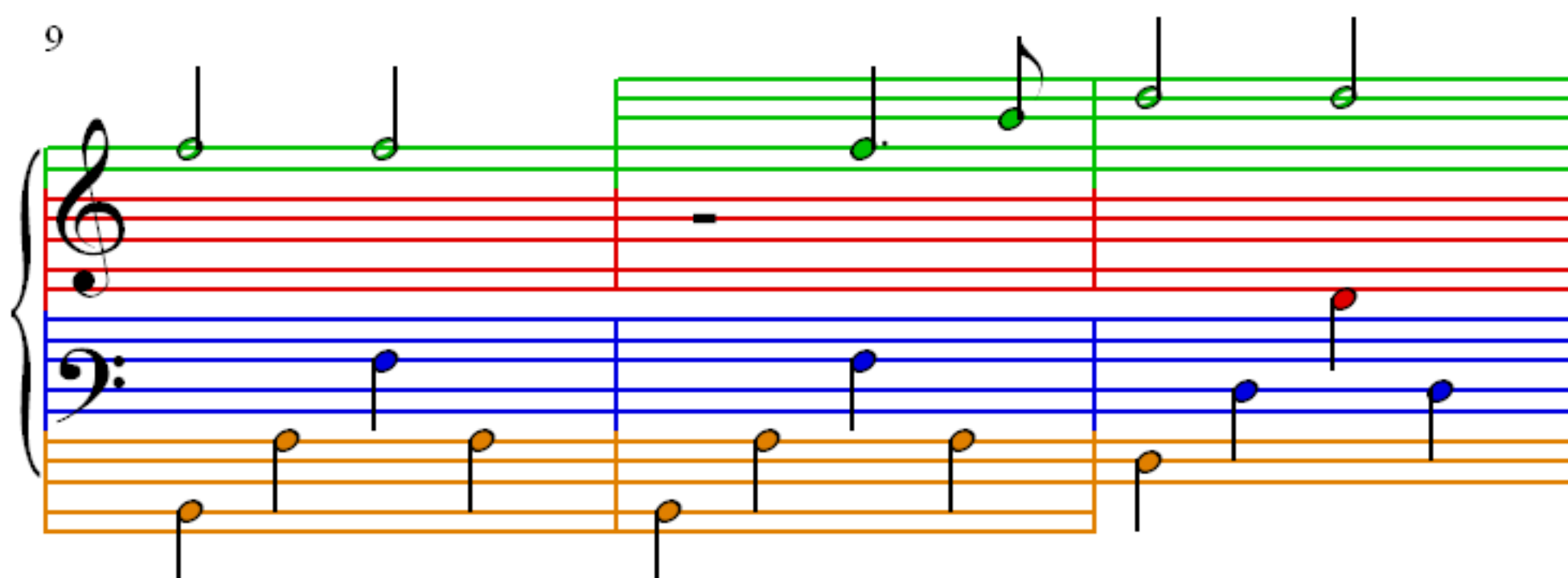
3

Measures 3-4 of the piece. The treble clef staff has a whole rest in measure 3 and a half note in measure 4. The bass clef staff has a whole note in measure 3 and a half note in measure 4. The staff is color-coded with green, red, blue, and orange lines.

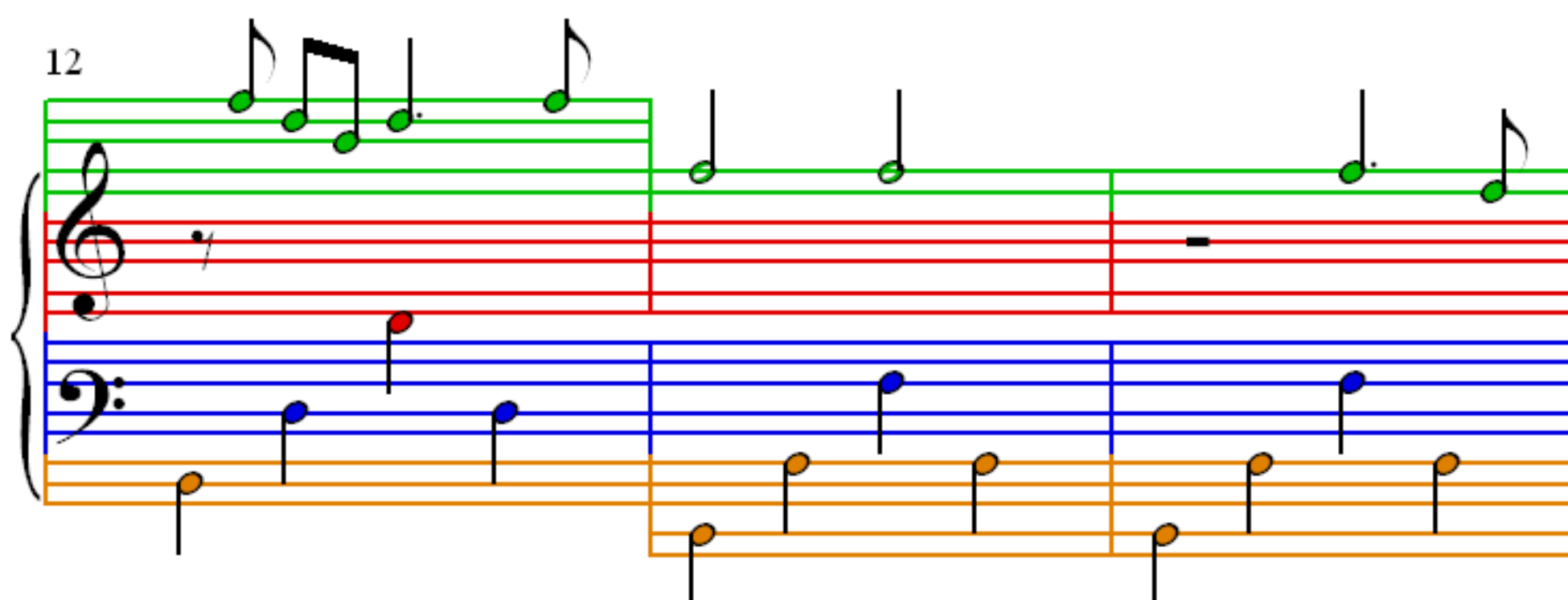
6

Measures 5-6 of the piece. The treble clef staff has a whole rest in measure 5 and a half note in measure 6. The bass clef staff has a whole note in measure 5 and a half note in measure 6. The staff is color-coded with green, red, blue, and orange lines.

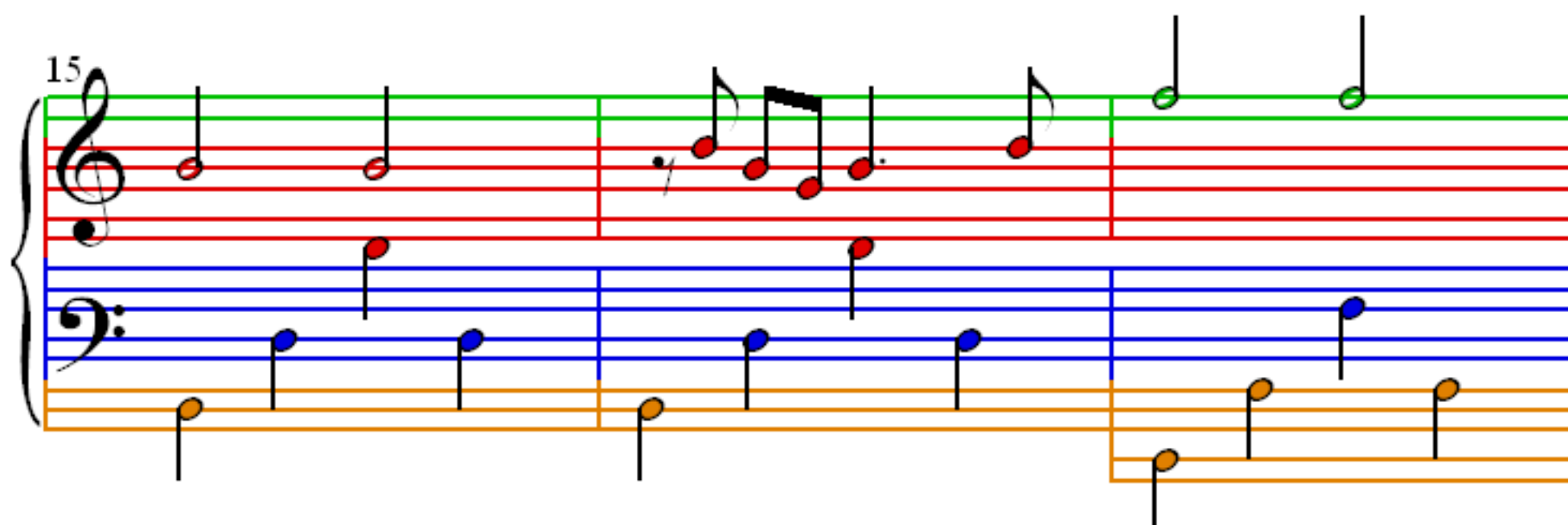
9



12



15



18

21

24

27

29

32

35

Measures 35 and 36 of a musical score. The system consists of three staves: a single treble staff at the top and a grand staff (treble and bass) below. The treble staff has a purple line, a green line, and an orange line. It contains a melodic line with eighth notes and a half note, with a slur over the last two notes. The grand staff has a red line, a blue line, and an orange line. The bass line consists of eighth notes, and the treble line consists of quarter notes. A repeat sign is at the end of measure 36.

37

Measures 37 and 38 of a musical score. The system consists of three staves: a single treble staff at the top and a grand staff (treble and bass) below. The treble staff has a purple line, a green line, and an orange line. It contains a melodic line with eighth notes and a half note, with a slur over the last two notes. The grand staff has a red line, a blue line, and an orange line. The bass line consists of eighth notes, and the treble line consists of quarter notes. A repeat sign is at the end of measure 38.

39

Measures 39 and 40 of a musical score. The system consists of three staves: a single treble staff at the top and a grand staff (treble and bass) below. The treble staff has a purple line, a green line, and an orange line. It contains a melodic line with eighth notes and a half note, with a slur over the last two notes. The grand staff has a red line, a blue line, and an orange line. The bass line consists of eighth notes, and the treble line consists of quarter notes. A repeat sign is at the end of measure 40.

41

Exercise 41, measures 41-42. The score is written for voice and piano. The voice part (top staff) features a melodic line with notes colored orange, purple, and green. The piano accompaniment (bottom staves) consists of a bass line with notes colored orange, blue, and green, and a treble line with notes colored red and green. Fingering numbers (5, 2, 5, 2, 5, 2, 5) are provided for the bass line in measure 41. Measure 42 continues the melodic and harmonic development.

43

Exercise 43, measures 43-44. The score is written for voice and piano. The voice part (top staff) features a melodic line with notes colored red, green, and purple. The piano accompaniment (bottom staves) consists of a bass line with notes colored blue and orange, and a treble line with notes colored red and green. Triplet markings (3) are present over the voice and piano parts in both measures. Measure 44 continues the melodic and harmonic development.

45

Exercise 45, measures 45-47. The score is written for voice and piano. The voice part (top staff) features a melodic line with notes colored green, purple, and orange. The piano accompaniment (bottom staves) consists of a bass line with notes colored blue and orange, and a treble line with notes colored red and green. Measure 45 continues the melodic and harmonic development. Measure 46 features a melodic line in the voice part and a bass line in the piano part. Measure 47 continues the melodic and harmonic development.

48

Measures 48-50 of a musical score. The system consists of a grand staff with a treble clef and a bass clef. The treble staff has a purple line, a green line, and a red line. The bass staff has a blue line, a red line, and an orange line. The notes are colored: purple, green, red, blue, and orange. Measure 48: Treble has a whole note on the purple line (F4) and a whole note on the green line (E4). Bass has a whole note on the orange line (C3) and a whole note on the blue line (F2). Measure 49: Treble has a whole note on the green line (E4) and a whole note on the red line (D4). Bass has a whole note on the blue line (F2) and a whole note on the orange line (C3). Measure 50: Treble has a whole note on the purple line (F4) and a whole note on the green line (E4). Bass has a whole note on the orange line (C3) and a whole note on the blue line (F2).

51

Measures 51-53 of a musical score. The system consists of a grand staff with a treble clef and a bass clef. The treble staff has a purple line, a green line, and a red line. The bass staff has a blue line, a red line, and an orange line. The notes are colored: purple, green, red, blue, and orange. Measure 51: Treble has a whole note on the purple line (F4) and a whole note on the green line (E4). Bass has a whole note on the orange line (C3) and a whole note on the blue line (F2). Measure 52: Treble has a whole note on the green line (E4) and a whole note on the red line (D4). Bass has a whole note on the blue line (F2) and a whole note on the orange line (C3). Measure 53: Treble has a whole note on the purple line (F4) and a whole note on the green line (E4). Bass has a whole note on the orange line (C3) and a whole note on the blue line (F2).

54

Measures 54-56 of a musical score. The system consists of a grand staff with a treble clef and a bass clef. The treble staff has a purple line, a green line, and a red line. The bass staff has a blue line, a red line, and an orange line. The notes are colored: purple, green, red, blue, and orange. Measure 54: Treble has a whole note on the purple line (F4) and a whole note on the green line (E4). Bass has a whole note on the orange line (C3) and a whole note on the blue line (F2). Measure 55: Treble has a whole note on the green line (E4) and a whole note on the red line (D4). Bass has a whole note on the blue line (F2) and a whole note on the orange line (C3). Measure 56: Treble has a whole note on the purple line (F4) and a whole note on the green line (E4). Bass has a whole note on the orange line (C3) and a whole note on the blue line (F2).

Measures 57-59 of a musical score. The system consists of a grand staff with a treble clef and a bass clef. The treble staff has a green line, a red line, and a purple line. The bass staff has a blue line, a red line, and an orange line. The music is written in a key signature of one flat (B-flat). Measure 57: Treble staff has a half note G4 (green) and a half note F4 (red). Bass staff has a half note G3 (blue) and a half note F3 (red). Measure 58: Treble staff has a half note G4 (green) and a half note F4 (red). Bass staff has a half note G3 (blue) and a half note F3 (red). Measure 59: Treble staff has a half note G4 (green) and a half note F4 (red). Bass staff has a half note G3 (blue) and a half note F3 (red).

Measures 60-62 of a musical score. The system consists of a grand staff with a treble clef and a bass clef. The treble staff has a green line, a red line, and a purple line. The bass staff has a blue line, a red line, and an orange line. The music is written in a key signature of one flat (B-flat). Measure 60: Treble staff has a half note G4 (green) and a half note F4 (red). Bass staff has a half note G3 (blue) and a half note F3 (red). Measure 61: Treble staff has a half note G4 (green) and a half note F4 (red). Bass staff has a half note G3 (blue) and a half note F3 (red). Measure 62: Treble staff has a half note G4 (green) and a half note F4 (red). Bass staff has a half note G3 (blue) and a half note F3 (red).

Measures 63-65 of a musical score. The system consists of a grand staff with a treble clef and a bass clef. The treble staff has a green line, a red line, and a purple line. The bass staff has a blue line, a red line, and an orange line. The music is written in a key signature of one flat (B-flat). Measure 63: Treble staff has a half note G4 (green) and a half note F4 (red). Bass staff has a half note G3 (blue) and a half note F3 (red). Measure 64: Treble staff has a half note G4 (green) and a half note F4 (red). Bass staff has a half note G3 (blue) and a half note F3 (red). Measure 65: Treble staff has a half note G4 (green) and a half note F4 (red). Bass staff has a half note G3 (blue) and a half note F3 (red).